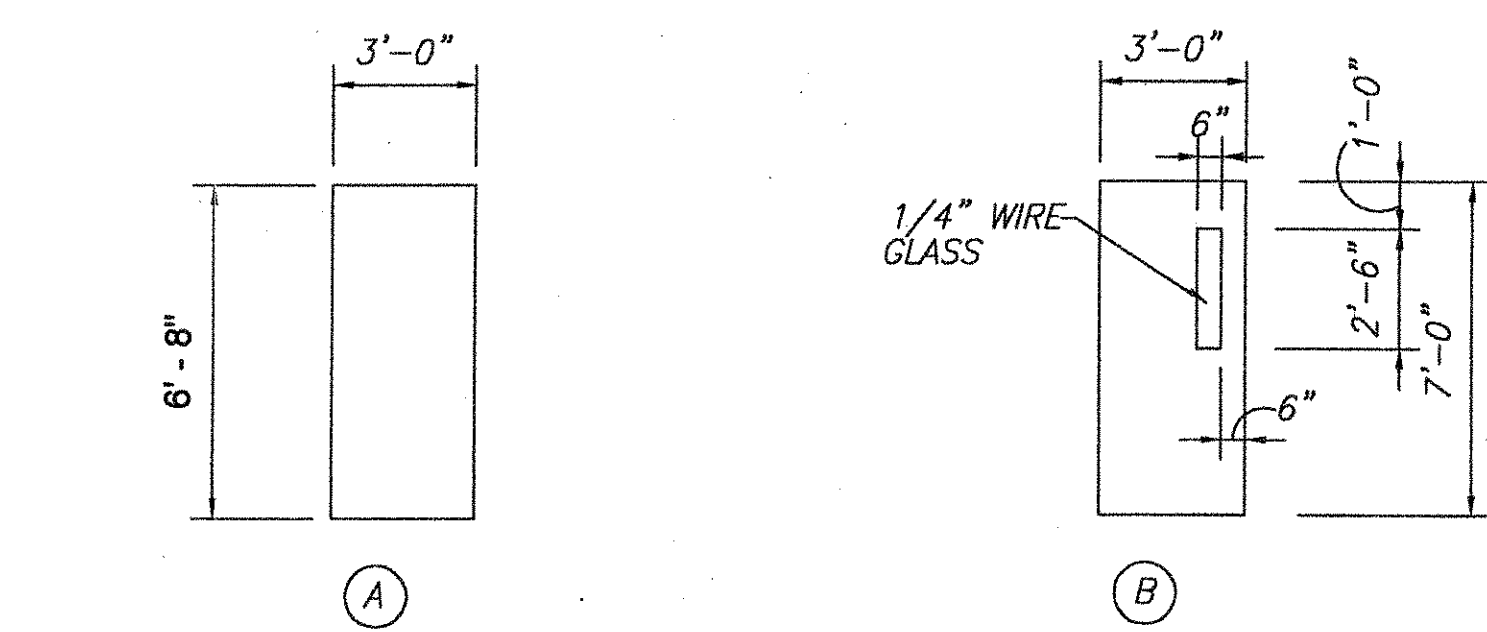


DOOR AND HARDWARE NOTES

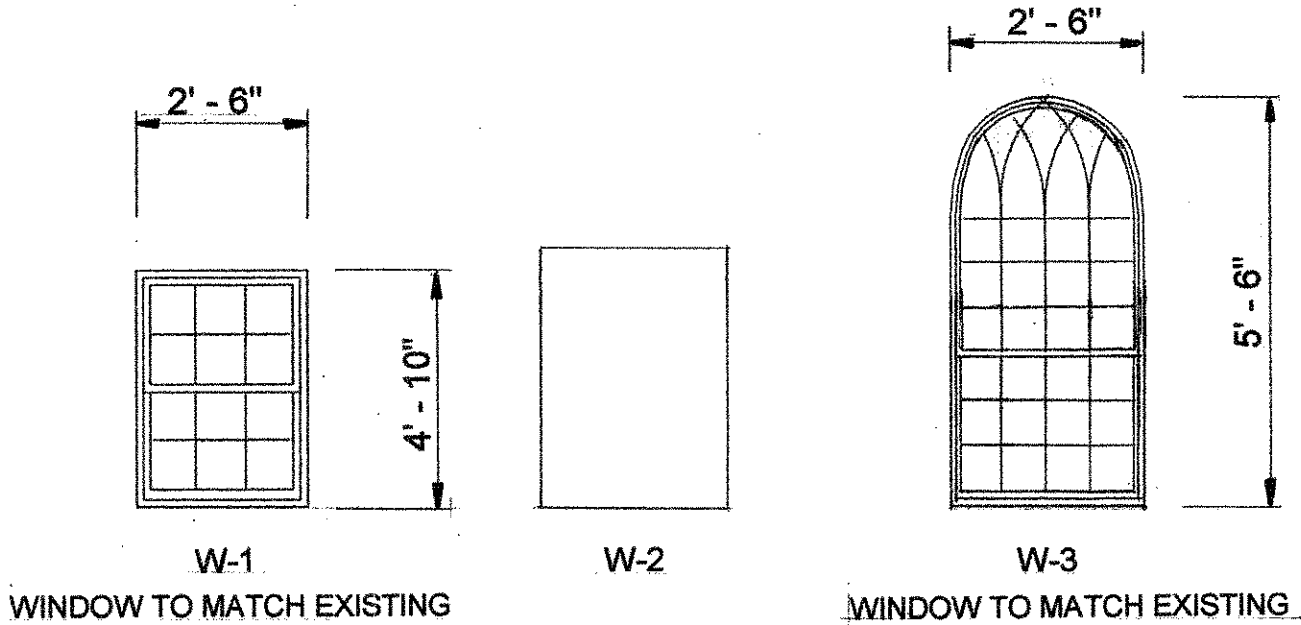
- 1. **DOOR #1, TYPE B WITH FRAME TYPE 2:**
6'-0" x 7'-0" CLASS B LABELED 1 1/2 HR. FIRE RATED WOOD DOOR AND METAL FRAME WITH 8" THROAT SIZE AND THE FOLLOWING HARDWARE:
2 - EXIT DEVICE
2 - SET PUSH/PULL
6 - HINGES
2 - CLOSER
2 - KICK PLATE
2 - STOP
- 2. **DOOR #2, TYPE A WITH FRAME TYPE 1:**
3'-0" x 6'-8" METAL DOOR AND FRAME WITH 4 1/2" THROAT AND THE FOLLOWING HARDWARE:
3 - HINGES
1 - STORE ROOM LOCK SET
1 - CLOSER
1 - KICK PLATE
1 - STOP
3 - SILENCERS
- 3. **DOOR #3, TYPE A WITH FRAME TYPE 1:**
3'-0" x 6'-8" METAL DOOR AND FRAME WITH 4 1/2" THROAT AND THE FOLLOWING HARDWARE:
3 - HINGES
1 - STORAGE ROOM LOCK SET
1 - CLOSER
1 - KICK PLATE
1 - STOP
3 - SILENCERS
- 4. **DOOR #4, TYPE A WITH FRAME TYPE 1:**
3'-0" x 6'-8" CLASS B LABELED 1 1/2 HR. FIRE RATED METAL DOOR AND FRAME WITH 8" THROAT AND THE FOLLOWING HARDWARE:
3 - HINGES
1 - LOCK SET WITH LEVER HANDLE
1 - CLOSER
1 - KICK PLATE
1 - STOP
3 - SILENCERS
- 5. **DOOR #5, TYPE A WITH FRAME TYPE 1:**
3'-0" x 6'-8" METAL DOOR AND FRAME WITH 6" THROAT AND THE FOLLOWING HARDWARE:
3 - HINGES
1 - TOMP LOCK (LATCH SET - PRIVACY FUNCTION W/LEVER HANDLE)
1 - PUSH/PULL SET
1 - CLOSER
1 - KICK PLATE
1 - STOP
3 - SILENCERS
- 6. **DOOR #6, TYPE B WITH FRAME TYPE 2:**
6'-0" x 7'-0" CLASS B LABELED 1 1/2 HR. FIRE RATED WOOD DOOR AND METAL FRAME WITH 8" THROAT AND THE FOLLOWING HARDWARE:
6 - HINGES
2 - EXIT DEVICE
2 - PUSH/PULL SET
2 - CLOSER
2 - KICK PLATE
2 - STOP
- 7. **DOOR #7, TYPE A WITH FRAME TYPE 1:**
3'-0" x 6'-8" METAL DOOR AND FRAME WITH 4 1/2" THROAT AND THE FOLLOWING HARDWARE:
3 - HINGES
1 - PUSH/PULL SET W/LEVER HANDLE
1 - CLOSER
1 - KICK PLATE
1 - STOP
3 - SILENCERS
- 8. **DOOR #8, TYPE A WITH FRAME TYPE 1:**
3'-0" x 6'-8" METAL DOOR AND FRAME WITH 4 1/2" THROAT AND THE FOLLOWING HARDWARE:
3 - HINGES
1 - STORAGE ROOM LOCK SET
1 - CLOSER
1 - KICK PLATE
1 - STOP
3 - SILENCERS

DOOR TYPES

SCALE: 1/4"=1'-0"



WINDOW TYPES



PARTITION TYPES AND RATED CEILINGS

1 Design No. G505
Restrained Assembly Rating—2 Hr.
Unrestrained Assembly Rating—2 Hr.

2 Design No. U905
Bearing Wall Rating—2 Hr.
Nonbearing Wall Rating—2 Hr.

3 Design No. C-43-3031
Formerly System No. 337
T Rating—0, 3/4 and 2 Hr (See Item 2)

1 Design No. G505
Restrained Assembly Rating—2 Hr.
Unrestrained Assembly Rating—2 Hr.

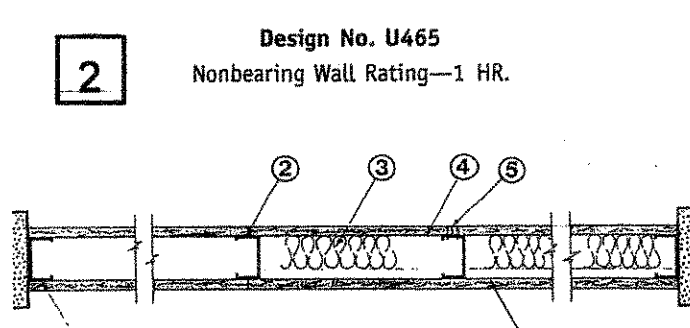
2 Design No. U905
Bearing Wall Rating—2 Hr.
Nonbearing Wall Rating—2 Hr.

3 Design No. C-43-3031
Formerly System No. 337
T Rating—0, 3/4 and 2 Hr (See Item 2)

1 Design No. G505
Restrained Assembly Rating—2 Hr.
Unrestrained Assembly Rating—2 Hr.

2 Design No. U905
Bearing Wall Rating—2 Hr.
Nonbearing Wall Rating—2 Hr.

3 Design No. C-43-3031
Formerly System No. 337
T Rating—0, 3/4 and 2 Hr (See Item 2)



1. Floor and Ceiling Runners—(not shown)—Channel shaped runners, 3/8 in. wide (min), 1-1/4 in. legs, formed from No. 25 MSJ (min) galv steel, attached to floor ceiling with fasteners spaced 24 in. OC max.
 2. Steel Studs—Channel shaped, 3-5/8 in. wide (min), 1-1/4 in. legs, 3/8 in. folded back returns, formed from No. 25 MSJ (min) galv steel spaced 24 in. OC max.
 3. Batts and Blankets—(Optional)—Mineral wool or glass fiber batts partially or completely filling stud cavity. See Batts and Blankets (BZ2) category for names of Classified companies.
 4. Wallboard, Gypsum—5/8 in. thick, 4 ft wide, attached to steel studs and floor and ceiling track with 1 in. long, Type 5 self-tapping steel screws spaced 8 in. OC, along edges of board and 12 in. OC in the field of the board. Joints oriented vertically and staggered on opposite sides of the assembly. When attached to Item 6 (furring channels), wallboard is screw attached to furring channels with 1 in. long, type 5 steel screws spaced 12 in. OC.
 5. Joint Sealant—(Optional)—Vinyl, dry or premixed joint compound, applied in two coats to joints and screw heads; paper tape, 2 in. wide, embedded in first layer of compound over all joints. As an alternate, nominal 3/32 in. thick gypsum veneer plaster may be applied to the entire surface of classified veneer board. Joints reinforced.
 6. Furring Channel—(Optional—Not Shown)—Resilient 25 MSJ galv steel channels spaced vertically max 24 in. OC. Flange portion attached to each intersecting stud with 1/2 in. long type 5-12 panhead steel screws.
- *Bearing the UL Classification Marking

FINISH SCHEDULE

ROOM NAME	FLOOR		BASE		WALL		CEILING		CEILG.HT.
	CERAMIC	VCT	CERAMIC	VINYL	CERAMIC	PTD.GYP	PTD.CMU	ACT	
LOBBY 1		X	X		X				EXISTG.
CORRIDOR		X			X	X	X	X	9'-0"
FOOD PANTRY		X			X	X	X	X	9'-0"
STORAGE 1		X			X	X	X	X	9'-0"
MACHINE RM								X	9'-0"
LOBBY 2					X				EXISTG.
CORRIDOR 2		X			X	X	X	X	9'-0"
WOMEN'S RM		X			X	X	X	X	9'-0"
W. LOUNGE		X			X	X	X	X	9'-0"
STORAGE 2		X			X	X	X	X	9'-0"

FINISH SCHEDULE NOTES

1. PROVIDE 3 COATS OF OWNER SELECTED PAINT FOR HOLLOW METAL DOORS AND FRAMES.
2. PROVIDE MASONRY FILLER AND 2 COATS OF OWNER SELECTED PAINT FOR MASONRY WALLS.
3. PROVIDE 3 COATS OF OWNER SELECTED PAINT FOR GYPSUM/DRYWALLS AND CEILINGS.
4. EXISTING FINISHED SURFACES ARE NOT TO BE PAINTED UNLESS REQUESTED BY THE OWNER AT AN ADDITIONAL CHANGE ORDER.

BXUV.P533
Fire Resistance Ratings - ANSI/UL 263

Design/System/Construction/Assembly Usage Disclaimer

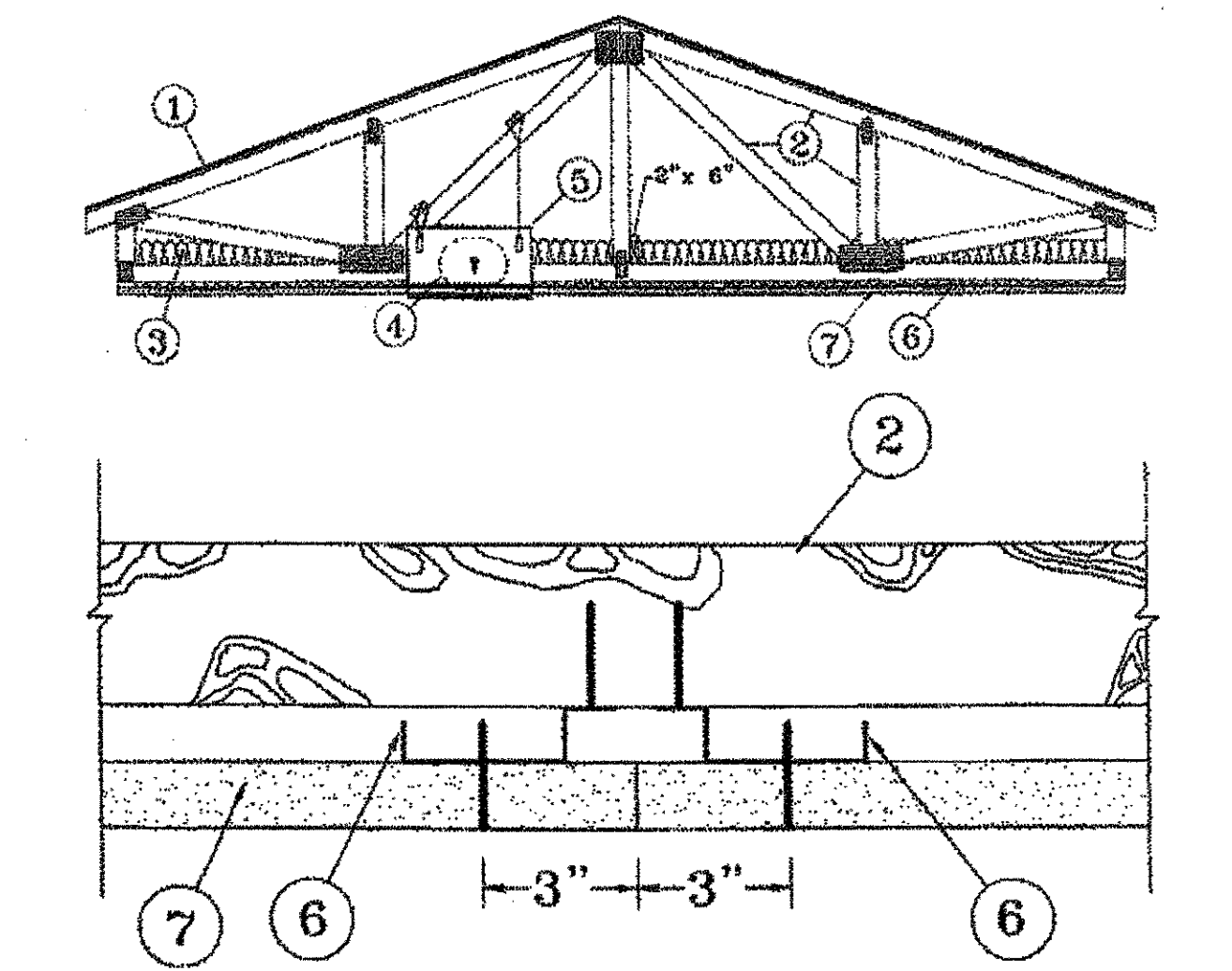
- Authorities Having Jurisdiction should be consulted in all cases as to the particular requirements covering the installation and use of UL listed or Classified products, equipment, systems, devices, and materials.
- Authorities Having Jurisdiction should be consulted before construction.
- Fire resistance assemblies and products are developed by the design submitter and have been investigated by UL for compliance with applicable requirements. The published information cannot address every construction nuance encountered in the field.
- When field issues arise, it is recommended the first contact for assistance be the technical service staff provided by the product manufacturer noted for the design. Users of the resistance assemblies are advised to consult the general Guide Information for each product category and each group of assemblies. The Guide Information includes specific information concerning alternate materials and alternate methods of construction.
- Only products which bear UL's Mark are considered as Classified, Listed, or Recognized.

Fire Resistance Ratings - ANSI/UL 263

See General Information for Fire Resistance Ratings - ANSI/UL 263

Design No. P533
February 05, 2008

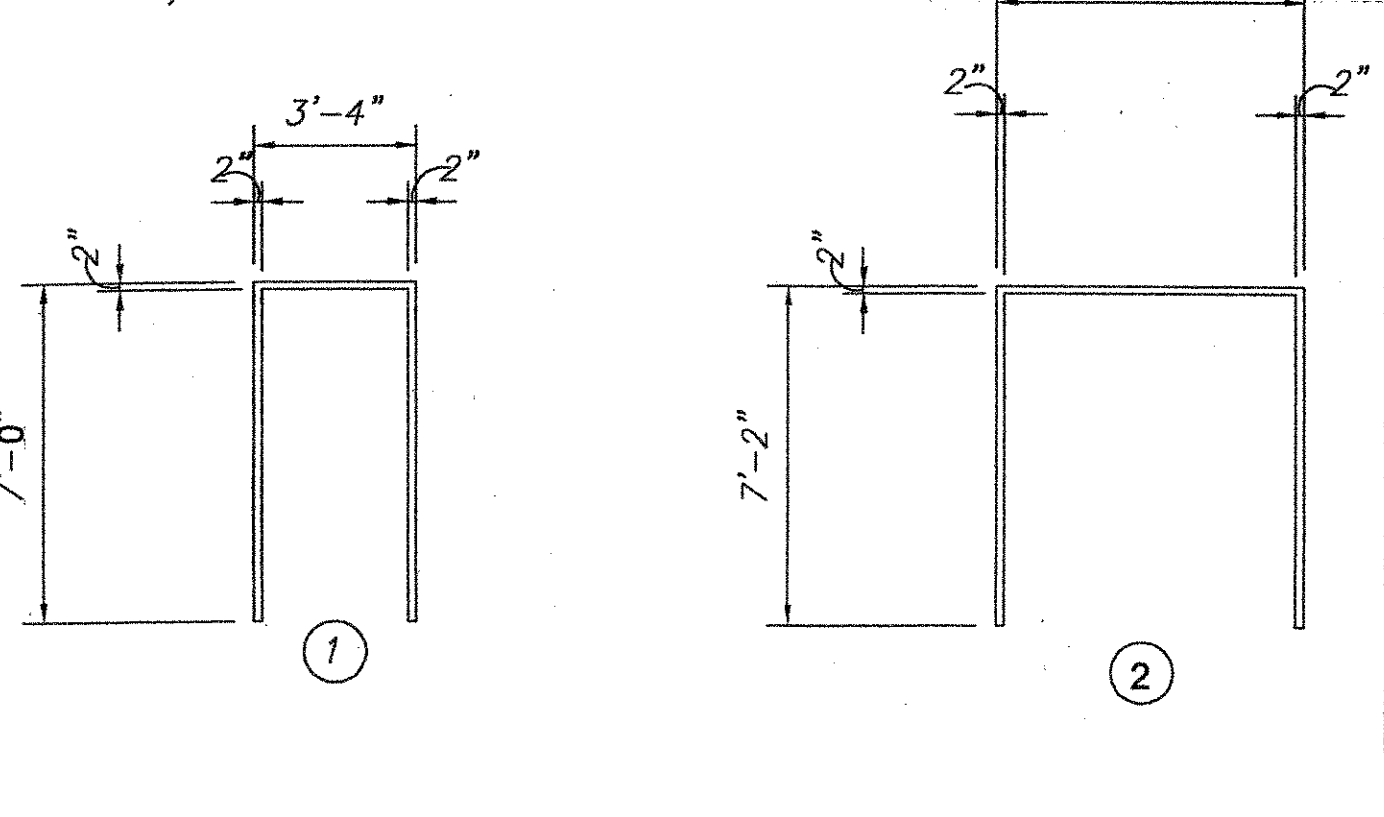
Unrestrained Assembly Rating—1 Hr
Finish Rating—23 Min



1. **Roofing System**—Any UL Class A, B or C Roofing System (TFRU) or Prepared Roof Covering (TRW) acceptable for use over non 15/32 in. thick wood structural panels secured to trusses with No. 6d ring shank nails spaced 12 in. OC along each truss. Staples having equal or greater withdrawal and lateral resistance may be substituted for the 6d nails. Construction adhesive may be used with either the nails or staples.
 2. **Trusses**—Pitched or parallel chord wood trusses, spaced a max of 24 in. OC, fabricated from non 2 by 4 lumber, with lumber oriented vertically or horizontally. Truss members secured together with 0.036 in. thick galv steel plates. Plates have 3/16 in. long teeth projecting perpendicular to the plane of the plate. The teeth are in pairs facing each other by the same punch, forming a split tooth type plate. Each tooth has a chisel point on its outside edge. These points are diagonally opposite each other for each pair. The top half of each tooth has a bevel for stiffness. The pairs are regauged approximately 7/8 in. centers with four rows of teeth per inch of plate width. Where the truss intersects with the interior face of the exterior wall, the min truss depth shall be 5-1/4 in. with a min roof slope of 3/12 and a min area in the plane of the truss of 21 sq/ft. Where the truss intersects with the interior face of the exterior wall, the min truss depth may be reduced to 3 in. If the batts and blankets (Item 3) are used as shown in the above illustration (Alternate Insulation Placement) and are firmly packed against the intersection of the bottom chords and the plywood sheathing.
 3. **Batts and Blankets**—(Optional)—Glass fiber insulation fitted in the concealed space, draped over the resilient channels and gypsum wallboard ceiling membrane or fastened to underside of roofing system. Any glass fiber insulation bearing the UL Classification Marking as to Surface Burning Characteristics and/or Fire Resistance, having a min density of 0.5 pcf.
 - 3A. **Loose Fill Material**—As an alternate to Item 3, any loose fill material bearing the UL Classification Marking for Surface Burning Characteristics and/or Fire Resistance, having a min density of 0.5 pcf.
 4. **Air Duct**—Any UL Class 0 or Class 1 flexible air duct installed in accordance with the instructions provided by the damper manufacturer.
 5. **Ceiling Damper**—Maximum nominal area, 324 sq. in. Maximum square size, 18 in. by 18 in. Rectangular sizes not to exceed 324 sq. in. with a maximum width of 18 in. Maximum damper height is 14 in. Installed in accordance with the manufacturer's installation instructions provided with the damper. Maximum damper openings not to exceed 324 sq. in. per 100 sq. ft of ceiling area.
 6. **POTTERFF**—Model CFD-521.
 7. **Gypsum Board**—Non 5/8 in. thick, 48 in. wide, installed with long dimension perpendicular to resilient channels with 1-1/8 in. long Type 5 screws spaced 12 in. OC and secured a min of 1/2 in. from side joints and 3 in. from end joints. At end joints, two resilient channels are used, extending a min of 6 in. beyond both ends of the joint. When installed, Item 3 or 3A, is draped over the resilient channels/gypsum wallboard ceiling membrane, screws shall be installed at 8 in. OC.
 8. **NATIONAL GYPSUM CO**—Types FSW-G, FSW-C, FSK-G, FSK-C.
 9. **Finishing System**—(Not shown)—Vinyl, dry or premixed joint compound, applied in two coats to joints and screw heads; paper tape, 2 in. wide, embedded in first layer of compound over all joints. As an alternate, nominal 3/32 in. thick veneer plaster may be applied to the entire surface of gypsum wallboard.
- *Bearing the UL Classification Marking
- Last Updated on 2008-02-05

FRAME TYPES

SCALE: 1/4"=1'-0"



DRAWING NO. A-2
 PROJECT NO.
 SCALE:
 PROVIDED BY:
 DRAWN BY:
 ST. MARY BAPTIST CHURCH
 8008 EASTERN AVENUE, NW
 WASHINGTON, DC 20022
 ELEVATOR AND RESTROOM ADDITIONS
 WARDER & ASSOCIATES, INC.
 CHURCH EXPANSION SPECIALIST
 6618 OLD ALEXANDRIA FERRY RD., CLINTON, MD 20745