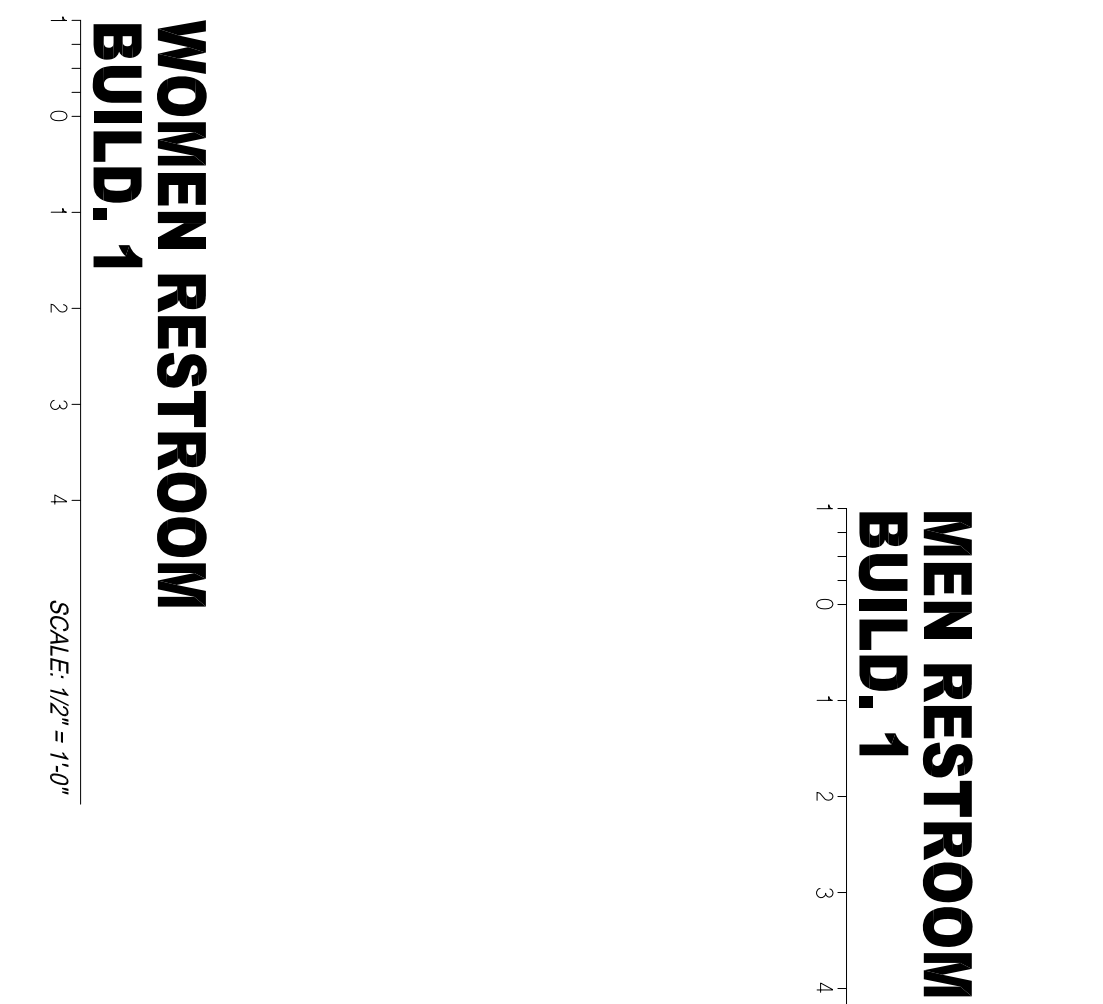
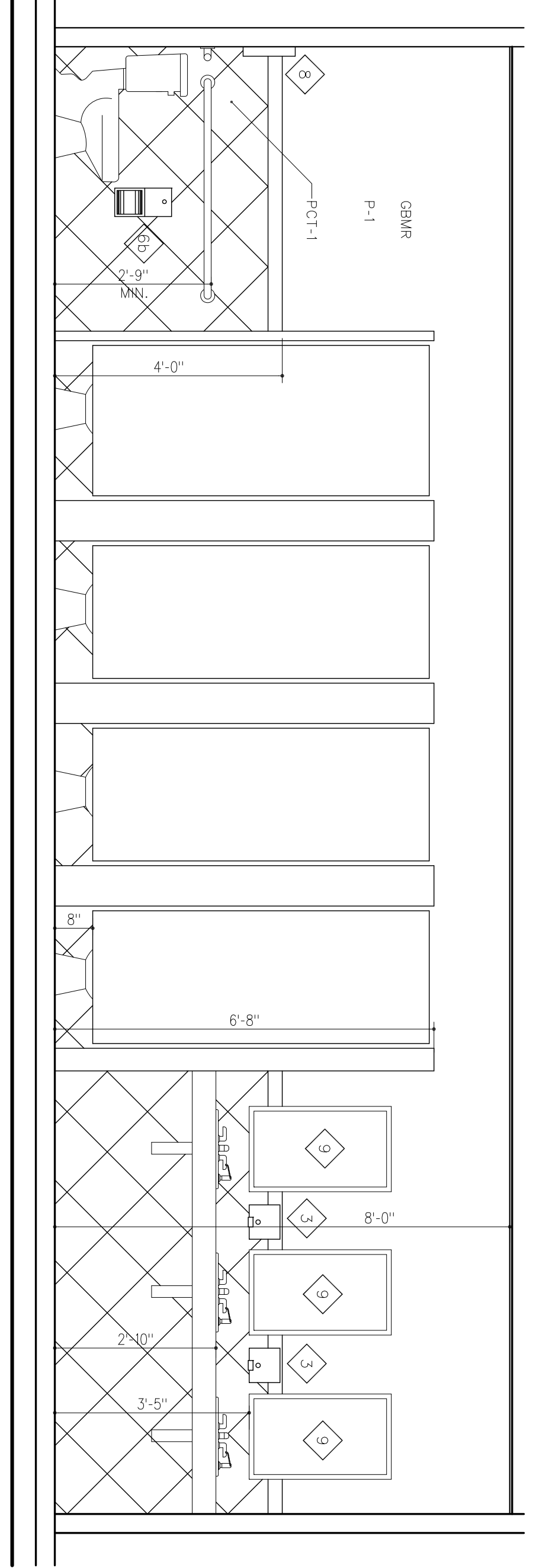
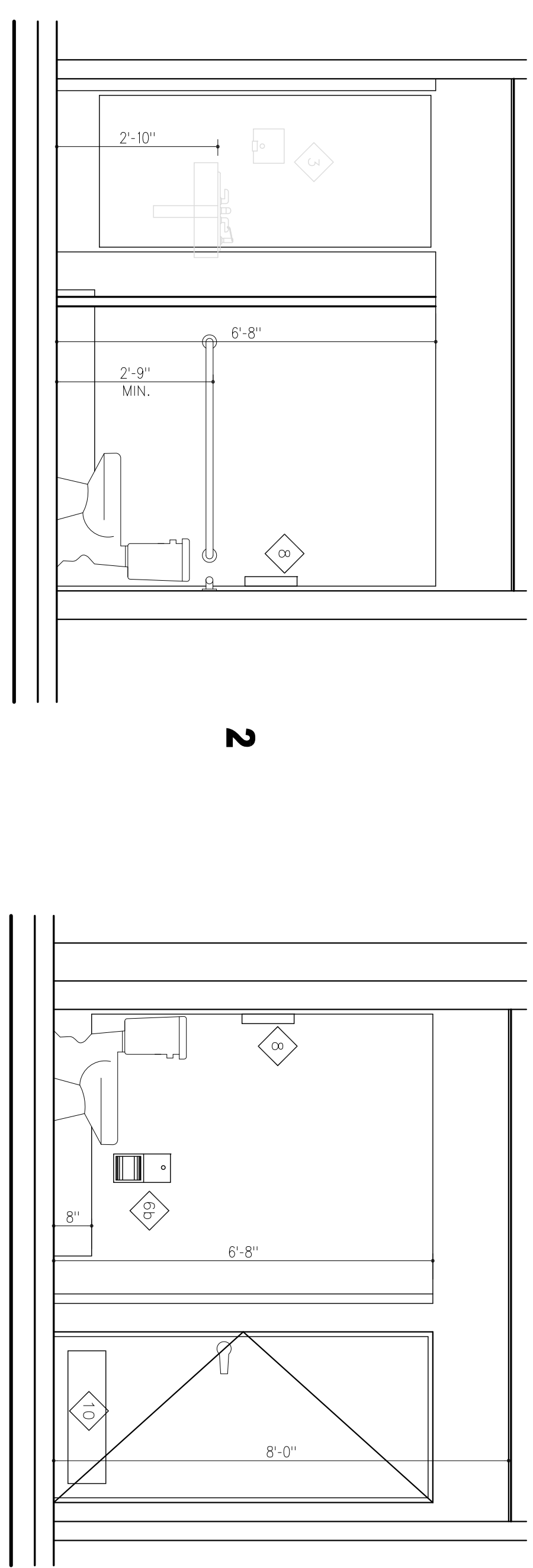
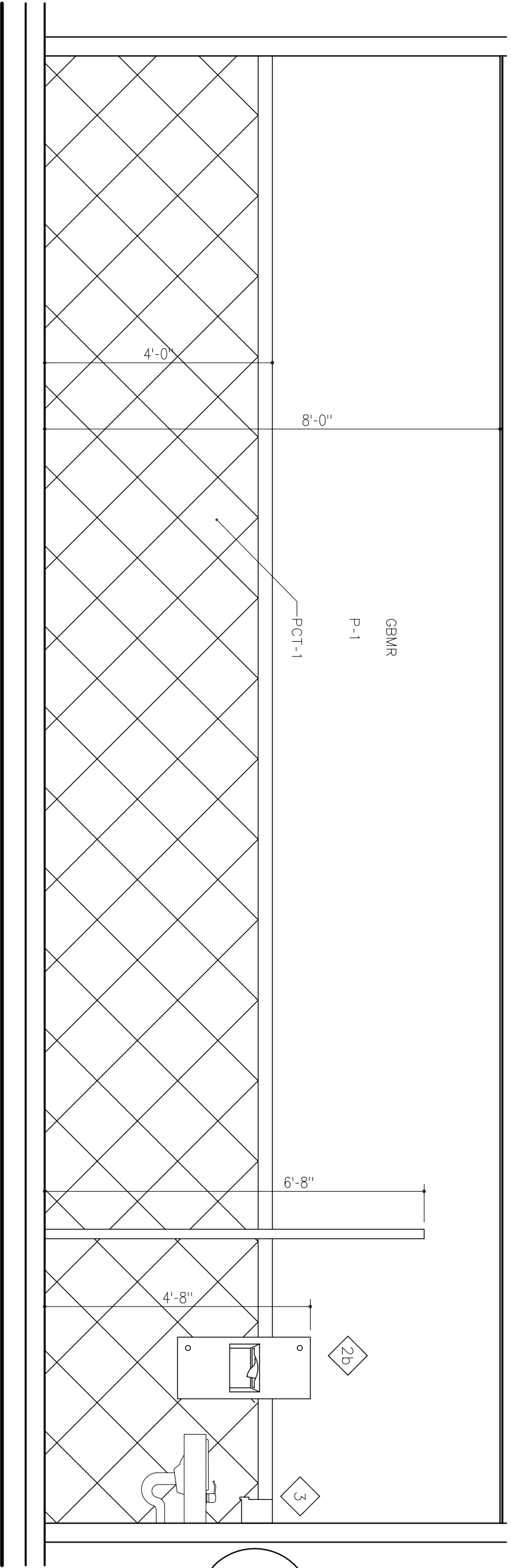
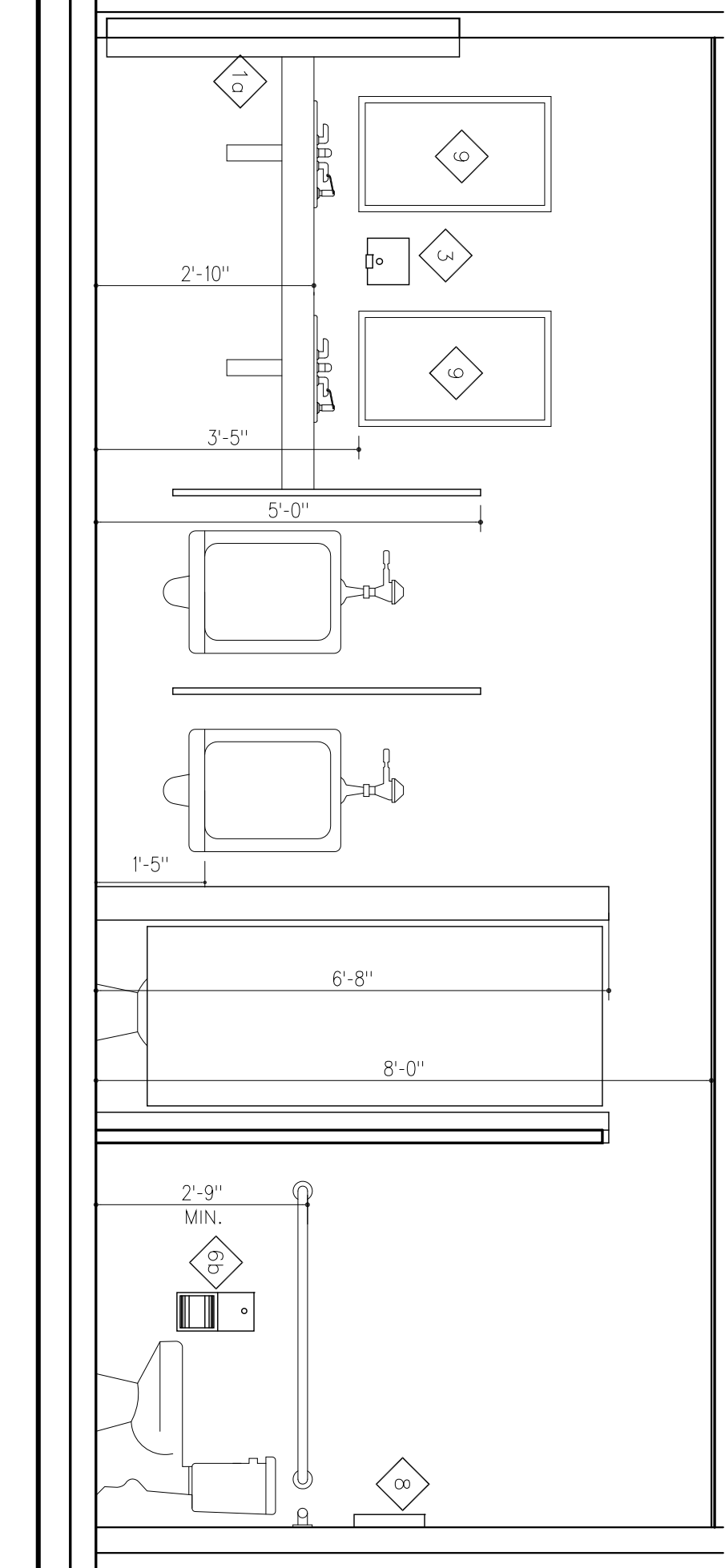
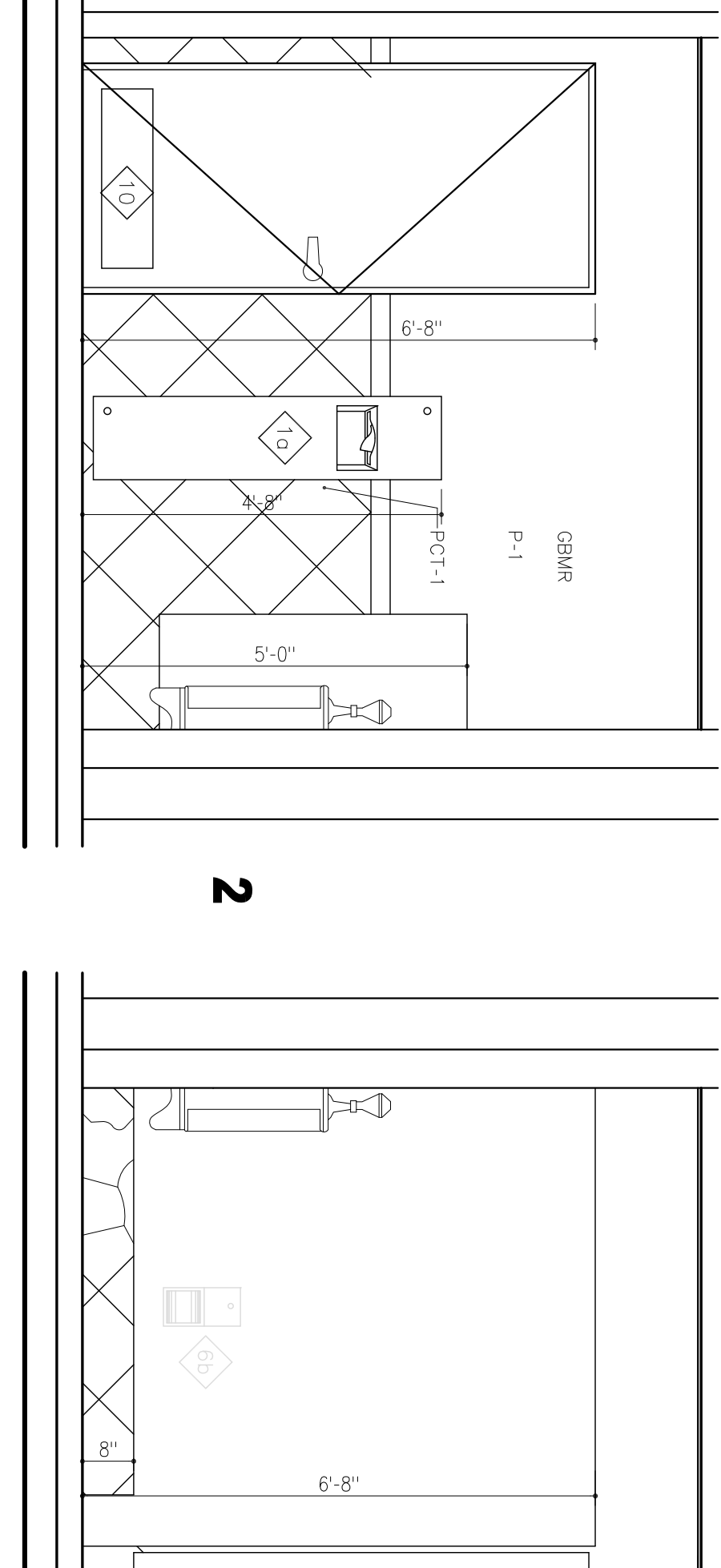
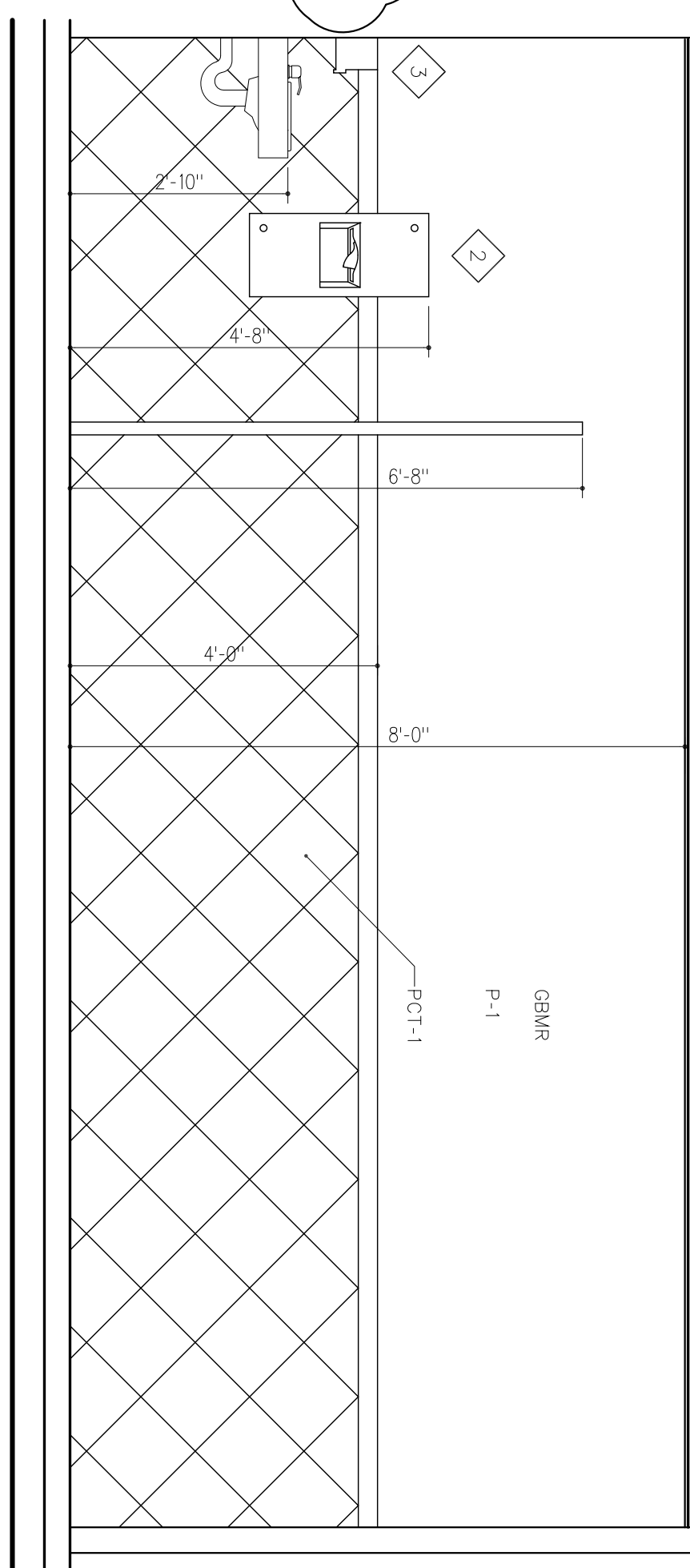


**WOMEN RESTROOM
ELEVATION BUILD. 1**
SCALE: 1/2" = 1'-0"



**MEN RESTROOM
ELEVATION BUILD. 1**
SCALE: 1/2" = 1'-0"



- NOTES:**
1. ACCESSIBLE WATER CLOSET DEPTH IS 30 INCHES AND IT AS FLOOR MOUNTED TOILET STALL DOOR IS IN COMPLIANCE WITH FABRC AND ADA GUIDELINES.
 2. TOILET ACCESSORIES TO BE APPROVED.
 3. TOILET ACCESSORIES TO BE APPROVED.
 4. EDGE OF THE SELECTED SURFACE NO HIGHER THAN 40 INCHES ABOVE THE FINISH FLOOR.
 5. ALL PIPES UNDER LAVATORIES SHALL BE INSULATED.
 6. ACCESSIBILITY TOILET STALL (COMPARTMENT) CAN BE 56" IN DEPTH IF YOU HAVE WALL MOUNTED WATER CLOSET. IF THE DEPTH OF A STANDARD WATER CLOSET MAY BE USED, WE RECOMMEND A DEPTH OF 60" (11.417.3).
 7. SECTION THROUGH TOILET STALL TO LOCATE FLOOR MOUNTED WATER CLOSET MAY BE USED. WE RECOMMEND A DEPTH OF 60" (11.417.3).
 8. SECTION THROUGH TOILET STALL TO LOCATE FLOOR MOUNTED WATER CLOSET MAY BE USED. WE RECOMMEND A DEPTH OF 60" (11.417.3).

** THE CENTER OF SINK SHALL BE A MINIMUM OF 15 INCHES FROM THE SIDE WALL AS NOTED ON THE PLAN. ** FOR VANITY MOUNTED WATER CLOSETS AND GRAB BAR DETAILS REFER TO A-11.1/15, 17 & 18

- LEGEND**
- 10 7 GAL. PAPER TOWEL DISPENSER AND WASTE RECEPTACLE (SURFACE MOUNTED 64676-9)
 - 11b 7 GAL. PAPER TOWEL DISPENSER AND WASTE RECEPTACLE (4" RECESSED 64676-2)
 - 20 1.8 GAL. PAPER TOWEL DISPENSER AND WASTE RECEPTACLE (SURFACE MOUNTED 64623-9)
 - 20 1.8 GAL. PAPER TOWEL DISPENSER AND WASTE RECEPTACLE (4" RECESSED 64623)
 - 3 HORIZONTAL SOAP DISPENSER (9343)
 - 4 BABY CHANGING STATION (SURFACE MOUNTED 9012)
 - 5 SANITARY NAPKIN/ZAMPON VENDOR (4" RECESSED 0448)
 - 6a DUAL ACCESS PARTITION MOUNTED DUAL TOILET PAPER DISPENSER (0032)
 - 6b SURFACE MOUNTED DUAL ROLL TOILET PAPER DISPENSER (0030)
 - 7 HEAVY DUTY UTILITY HOOK (1306)
 - 8 SURFACE MOUNTED TOILET SEAT COVER DISPENSER (64775W)
 - 9 MIRROR
 - 10 KICK PLATE
- ALL TOILET ACCESSORIES BY AMERICAN SPECIALTIES INC. OR APPROVED EQUAL.