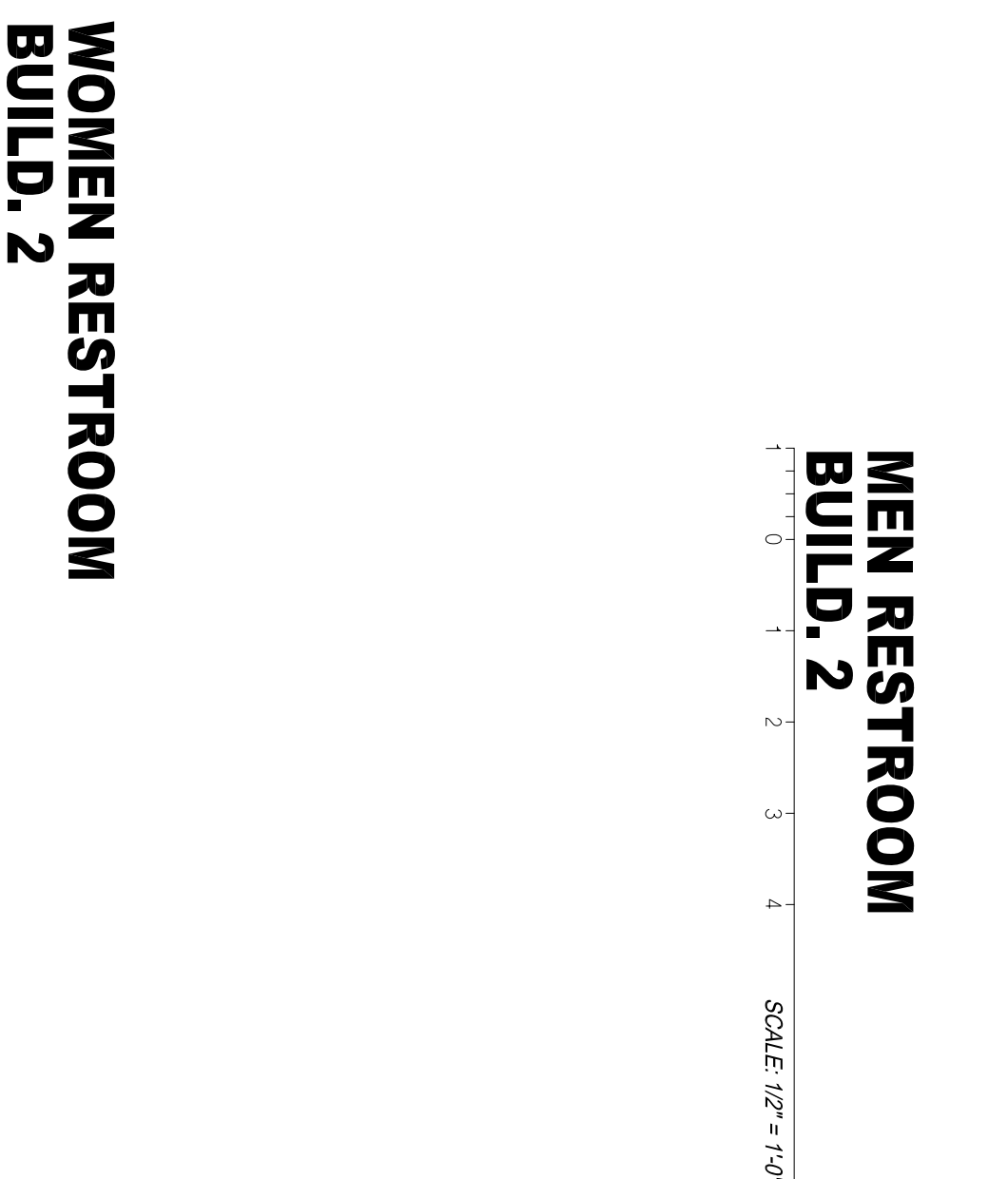
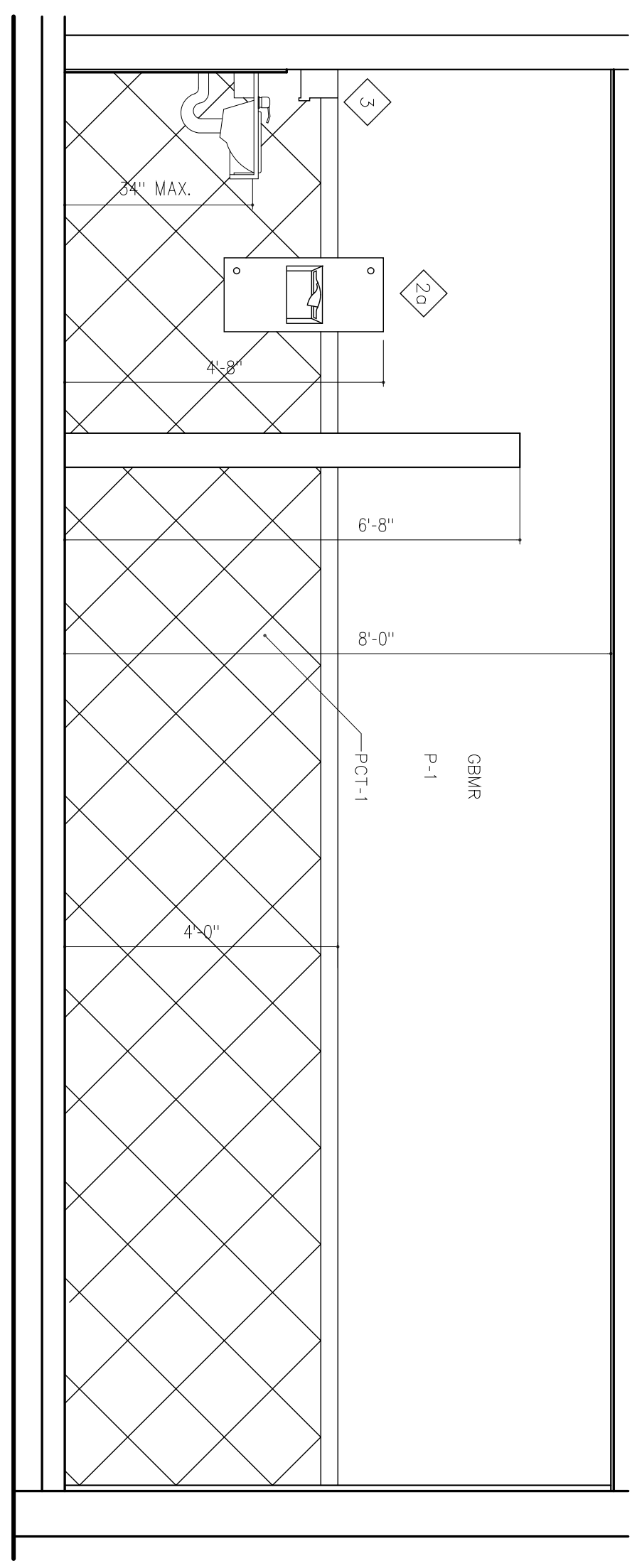
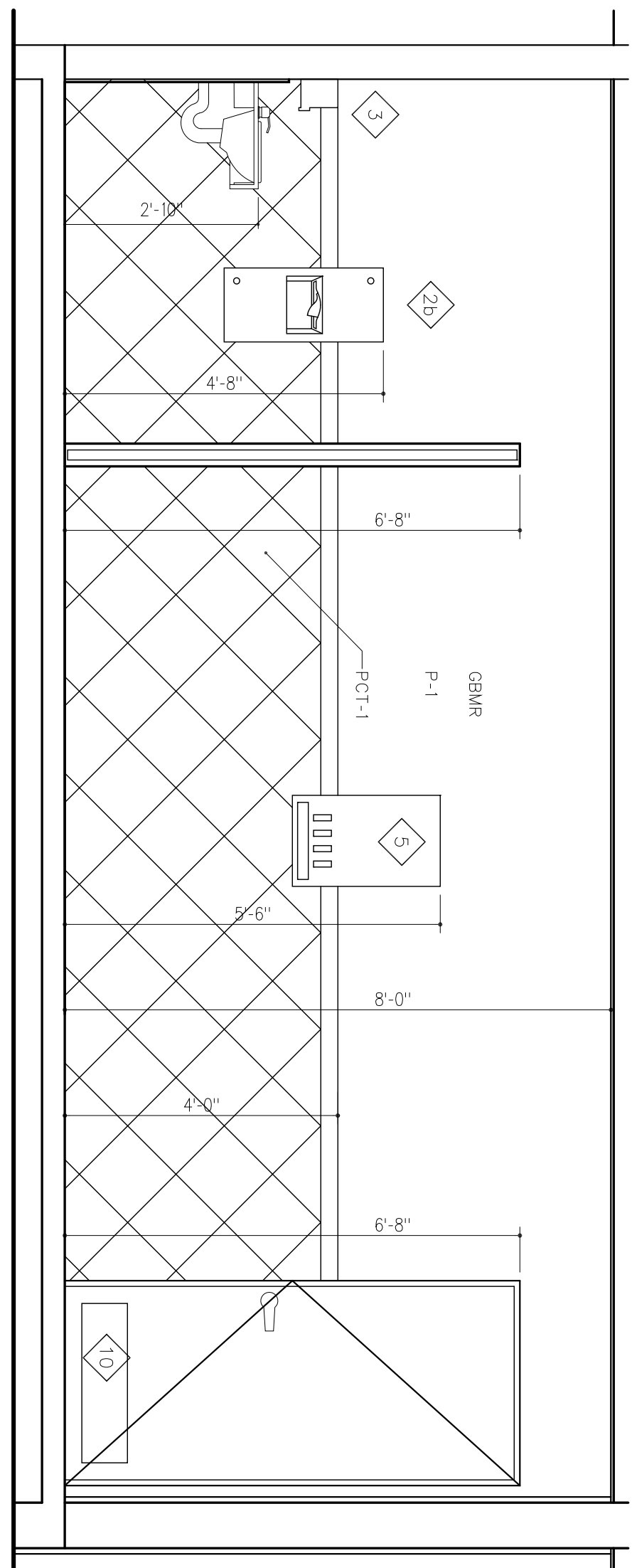
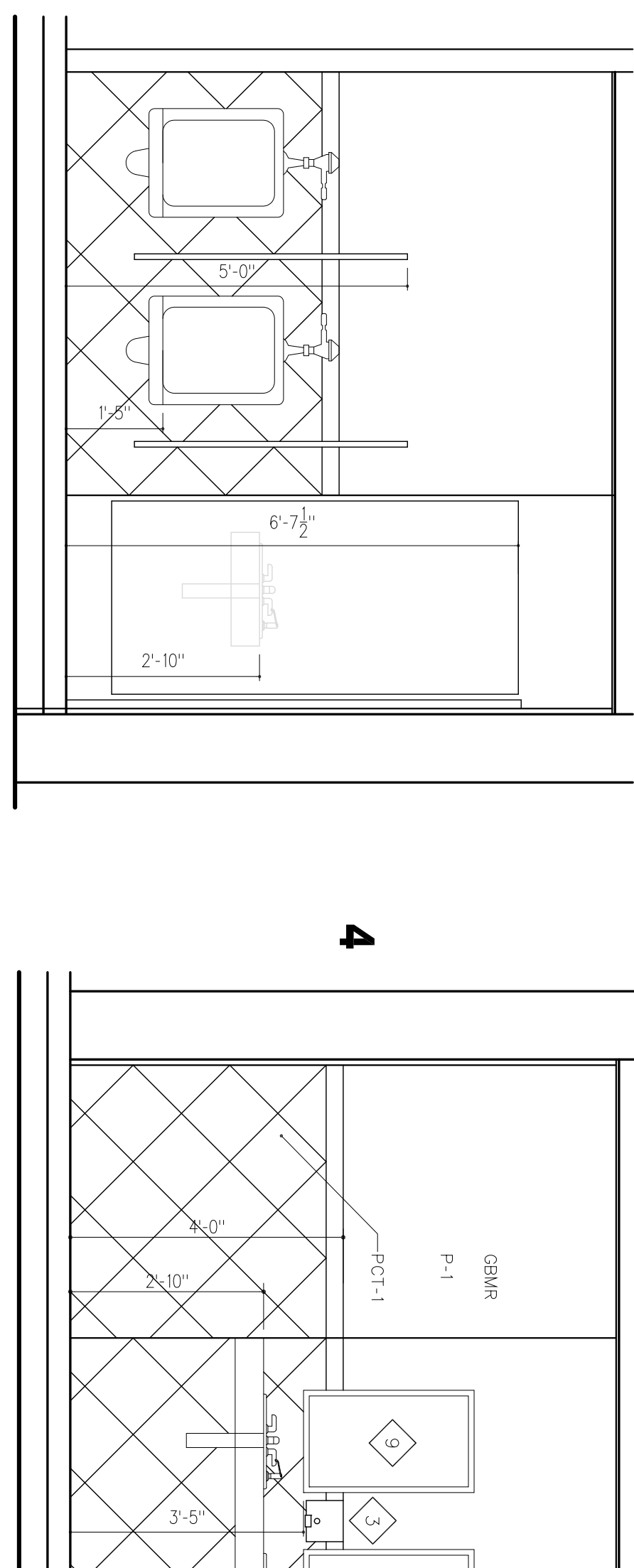
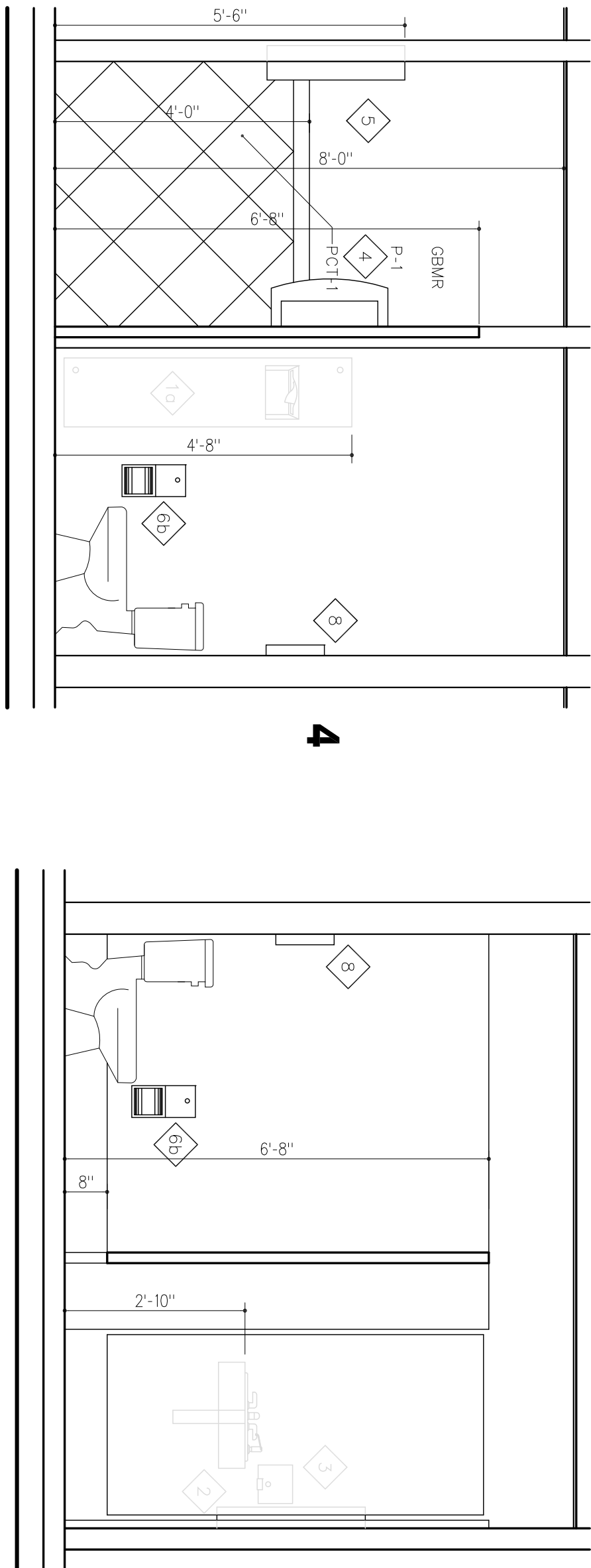
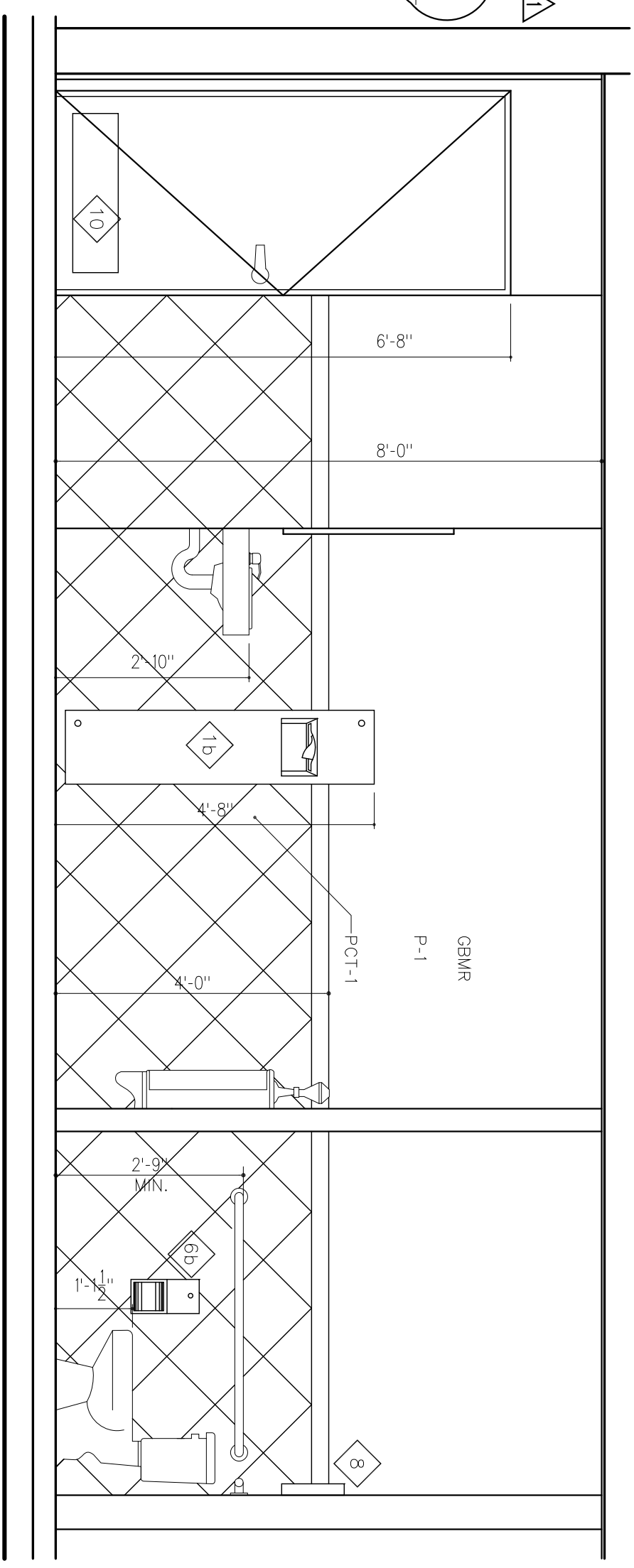
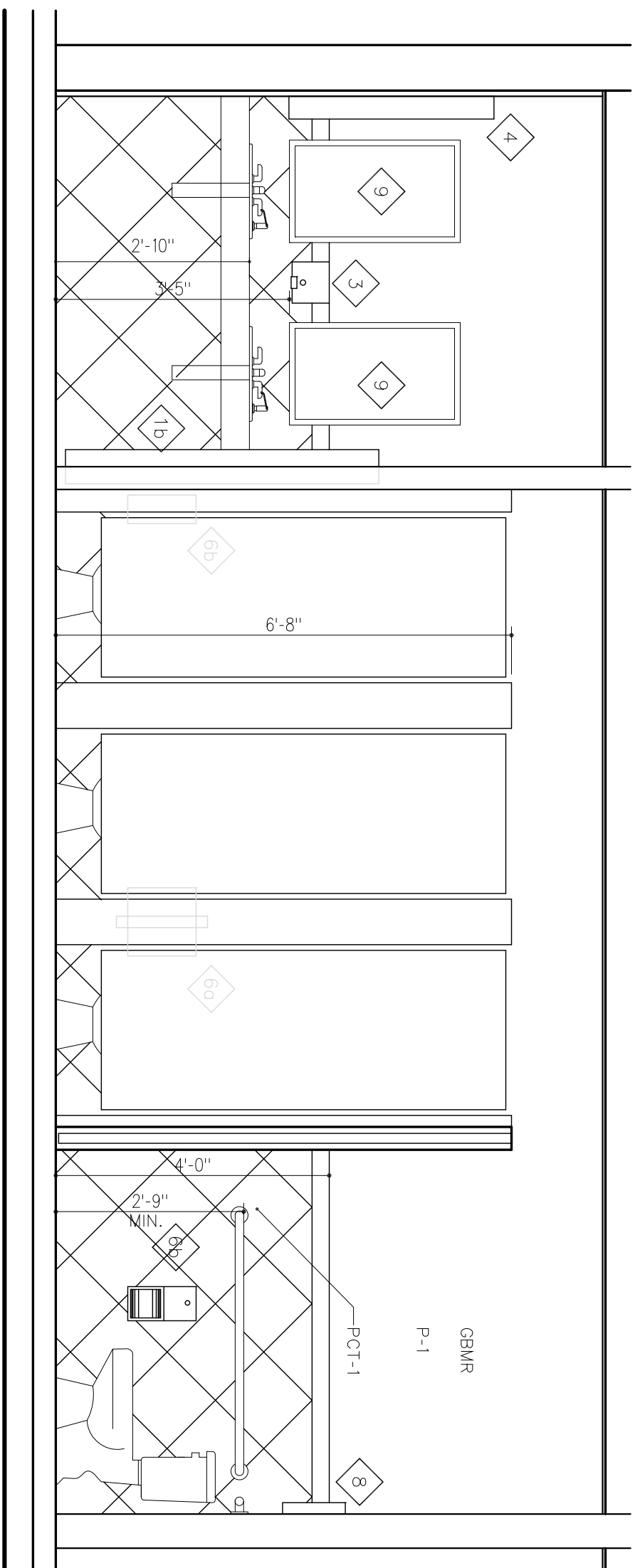


**WOMEN BATHROOM
ELEVATION BUILD. 2**
SCALE: 1/2" = 1'-0"



**MEN RESTROOM
BUILD. 2**
SCALE: 1/2" = 1'-0"



LEGEND

- 1 0L PAPER TONEL DISPENSER AND WASTE RECEPTACLE (SURFACE MOUNTED 6469-9)
- 10 7 OAL PAPER TONEL DISPENSER AND WASTE RECEPTACLE (4" RECESSED 6469-2)
- 20 18 OAL PAPER TONEL DISPENSER AND WASTE RECEPTACLE (SURFACE MOUNTED 6462-9)
- 20 18 OAL PAPER TONEL DISPENSER AND WASTE RECEPTACLE (4" RECESSED 6462-2)
- 3 HORIZONTAL SOAP DISPENSER (9443)
- 4 BABY CHANGING STATION (SURFACE MOUNTED 9072)
- 5 SANITARY MOPPING/TAMPON VENDOR (4" RECESSED 9469)
- 60 DUAL ACCESS PARTITION MOUNTED DUAL TOILET PAPER DISPENSER (0022)
- 60 SURFACE MOUNTED DUAL ROLL TOILET PAPER DISPENSER (0020)
- 7 HEAVY DUTY UTILITY HOOK (1306)
- 8 SURFACE MOUNTED TOILET SEAT COVER DISPENSER (04775W)
- 9 MIRROR
- 10 KICK PLATE

NOTES:

1. ACCESSIBLE WATER CLOSET DEPTH IS 30 INCHES AND IT IS FLOOR MOUNTED.
2. ACCESSIBILITY TO TOILET STALL DOOR IS IN COMPLIANCE WITH FACBC
3. TOILET ACCESSORIES TO BE APPROVED
4. IF PROVIDED, MIRRORS SHALL BE MOUNTED WITH THE BOTTOM ABOVE THE FINISH FLOOR SURFACE NO HIGHER AND HIGHER THAN 40 INCHES OR OTHERWISE CONFIGURED TO PROTECT AGAINST CONTACT.
5. ALL PIPES UNDER LAVATOIRES SHALL BE INSULATED.
6. ACCESSIBILITY TOILET STALL (COMPARTMENT) CAN BE 56" IN DEPTH IF YOU HAVE WALL MOUNTED WATER CLOSET. IF THE DEPTH OF A STANDARD STANDARD ACCESSIBLE TOILET STALL IS INCREASED AT 3 INCHES.
7. THE GRAMM-SHIELDS HYGIENIC FINISH SIGNL BE NON-SLIP (NON-GRADED) FINISH NON-ABSORBENT AND RESIST TO FLOOR GRIM. THE INTER-WALLS SHALL BE INSTALLED TO A MIN. HEIGHT OF 4'-0" ABOVE THE FIN. FLOOR. DIMENSIONS TO LOCATE PLUMBING FIXTURES ARE TO FINISHED SURFACE OF WALL.

** THE CENTER OF SINK SHALL BE A MINIMUM OF 15 INCHES FROM THE SIDE WALL AS OF THE FLOOR MOUNTED WATER CLOSET MAY BE USED. FOR VANITY MOUNTING HEIGHTS AND GRAB BAR DETAILS REFER TO A11-1/19, 1, 17 & 18