

FIRE ALARM PLAN (FIRST FLOOR)

SCALE: 1/8" = 1'-0"

NOTES:

- ① MANUAL HOOD RELEASE PULL STATION.

FIRE ALARM SPECIFICATIONS

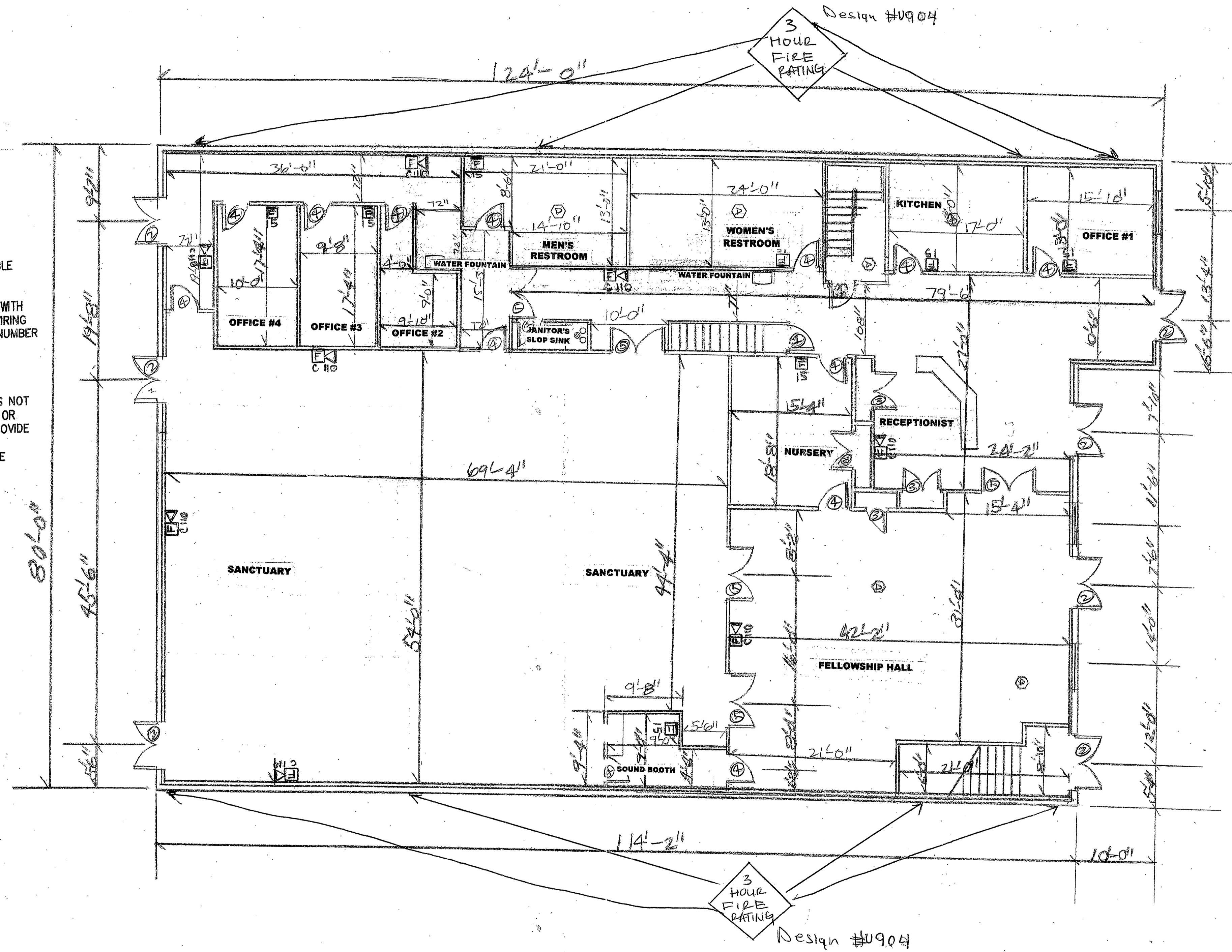
PROVIDE A COMPLETE FIRE ALARM SYSTEM AS INDICATED, IN ACCORDANCE WITH EQUIPMENT MANUFACTURER'S WRITTEN INSTRUCTIONS AND COMPLYING WITH APPLICABLE PORTIONS OF NEC AND NECA'S "STANDARD OF INSTALLATION".

NUMBER OF CONDUCTORS, SIZE, TYPE AND COLOR CODE SHALL BE IN ACCORDANCE WITH MANUFACTURER'S REQUIREMENTS. INSTALL PER MANUFACTURER'S POINT-TO-POINT WIRING DIAGRAM. DETERMINE EXACT NUMBER OF WIRES FOR EACH FIRE AREA ZONE FROM NUMBER AND TYPES OF DEVICES INSTALLED.

WHERE THERE ARE A NUMBER OF POWER REQUIRING DEVICES, SUCH AS SMOKE DETECTORS, FAN RELAYS, DOOR HOLDERS, STROBE LIGHTS AND SMOKE DAMPER OPERATORS INSTALLED IN A CIRCUIT, GROUP IN NUMBERS SO POWER REQUIRED DOES NOT EXCEED 80% OF MANUFACTURER'S POWER SUPPLY RATING. PROVIDE EXTRA WIRING, OR EXTRA POWER SUPPLIES REQUIRED TO FULFILL THAT REQUIREMENT. IN ADDITION, PROVIDE EXTRA OR LARGER SIZE WIRING TO ALLEVIATE VOLTAGE DROPS WHICH MAKES DEVICE OPERATED BEYOND VOLTAGE LIMITS FOR WHICH IS WAS DESIGNED. DETERMINE ABOVE WITH MANUFACTURER'S REPRESENTATIVE WHILE EQUIPMENT IS BEING INSTALLED.

FIRE ALARM LEGEND

- Ⓜ MANUAL PULL STATION, 48" A.F.F.
- Ⓜ¹⁵ STROBE, 6"-8" A.F.F. NUMERAL INDICATES CANDELA RATING. WHITE COLOR.
- Ⓜ¹⁵ STROBE/HORN, 6"-8" A.F.F. NUMERAL INDICATES CANDELA RATING. WHITE COLOR. SUB-LETTER 'C' DENOTES CEILING MOUNTED.
- Ⓞ SMOKE DETECTOR.
- Ⓞ HEAT DETECTOR.
- Ⓞ DUCT SMOKE DETECTOR.
- Ⓞ FIRE ALARM SPEAKER, CEILING MOUNTED.
- Ⓜ¹⁵ FACP FIRE ALARM CONTROL PANEL, 6'-0" A.F.F. TO TOP.
- Ⓜ¹⁵ FAMP FIRE ALARM ANNUNCIATOR PANEL, 6'-0" A.F.F. TO TOP.
- Ⓜ TAMPER SWITCH
- Ⓜ FLOW SWITCH



A. FIRE ALARM PLAN (FIRST FLOOR)

REVISION	#3
DATE	OCTOBER 31, 2007

SHEET NO.

A.6

