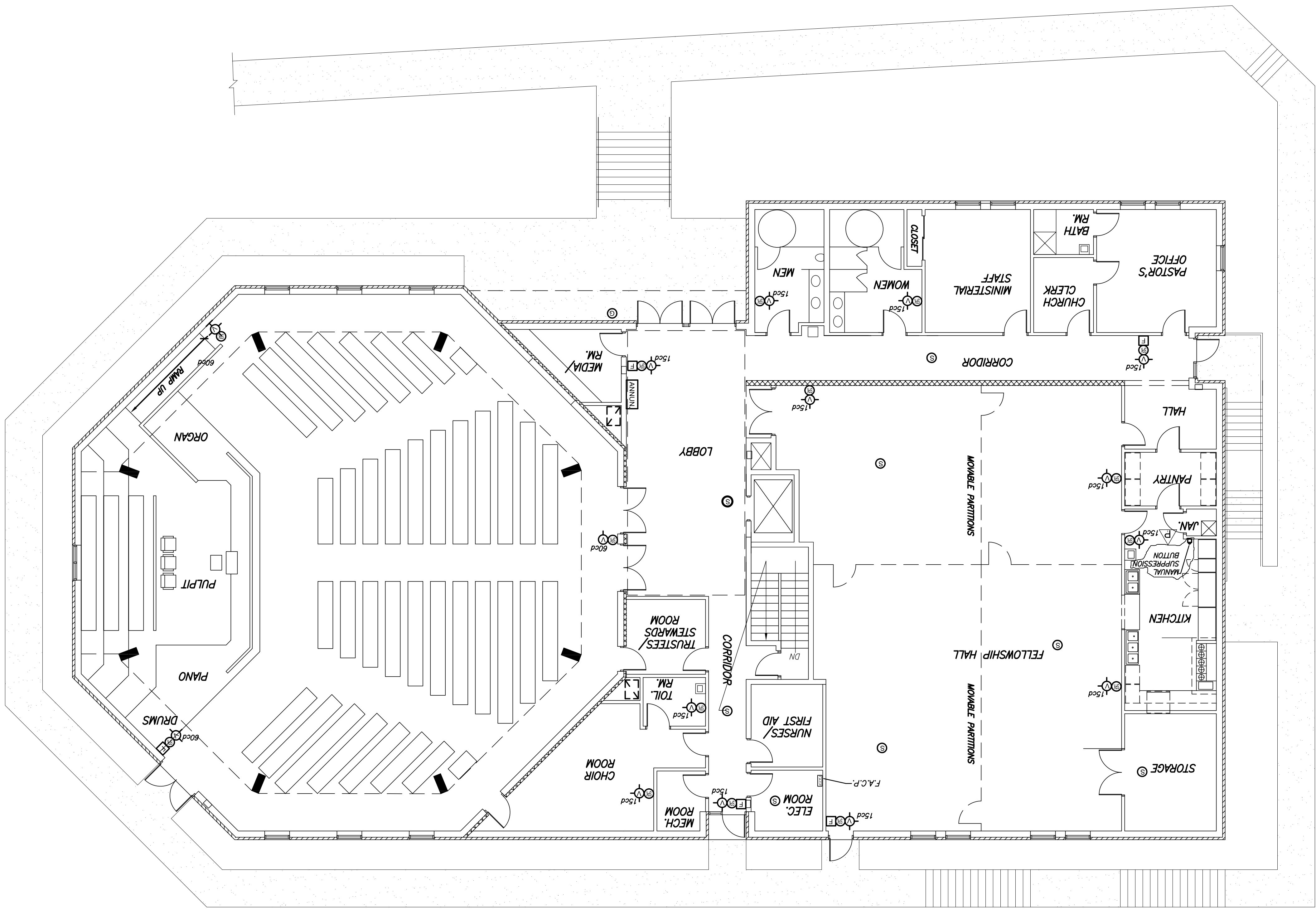


GROUND FLOOR PLAN - FIRE ALARM

SCALE: 1/8"=1'-0"



- GENERAL FIRE ALARM NOTES**
- 1 - GENERAL: FURNISH AND INSTALL A COMPLETE NEW OPERATIONAL, INTELLECT, MONITORING CODED, SENSORIZED FIRE ALARM AND DETECTION SYSTEM AS SHOWN ON THE PLANS. NOTES AND AS SPECIFIED HEREIN TO BE INSTALLED IN FIRST CLASS OPERATING CONDITION. ALL EQUIPMENT SHALL BE UL LISTED FOR USE IN FIRE PROTECTIVE SIGNALING SYSTEMS AND SHALL BE UL LABELLED SYSTEM SHALL CONFORM TO LOCAL AND APPLICABLE NFPA AND NEC CODES. AMERICANS WITH DISABILITIES ACT, AND SHALL MEET THE REQUIREMENTS OF ALL OTHER CODES AND STANDARDS CURRENTLY ADOPTED BY THE AUTHORITY HAVING JURISDICTION.
  - 2 - ALL DEVICES, COMPONENTS OR EQUIPMENT SHALL BE APPROVED FOR THE FIRE PROTECTIVE SIGNALING PURPOSE FOR WHICH SUCH EQUIPMENT IS USED.
  - 3- THE FIRE ALARM SYSTEM SHALL HAVE THE CAPACITY TO SERVE THE QUANTITY OF DEVICES SHOWN ON THE DRAWINGS AND HAVE CENTRAL STATION COMMUNICATION CAPABILITY. THE SYSTEM SHALL CONTAIN CIRCUITS, SUB-CIRCUITS, LINES AND COMPONENTS AS REQUIRED AND NOT LOCATED TO MORE THAN BOX OF ITS CAPACITY.
  - 4 - EACH INTELLECTUAL ADDRESSABLE DEVICE OR CONVENTIONAL ZONE OF THE SYSTEM SHALL BE DISPLAYED AT THE FIRE ALARM CONTROL PANEL BY A UNIQUE ALPHA-NUMERIC LABEL IDENTIFYING ITS TYPE AND LOCATION.
  - 5 - THE CONTRACTOR SHALL SECURE ALL APPROVALS AS REQUIRED BY THE FIRE DEPARTMENT, OBTAIN NECESSARY PERMITS AND PAY ALL FEES AS REQUIRED.
  - 6 - WIRE SIZES SHALL BE AS FOLLOWS:
    - NO POWER ... #12 AWG MIN.
    - HORN/STROBE ... #18 AWG MIN.
    - SMOKE DET., MANUAL STATION, SUPERVISORY CIRCUIT ... #18 AWG MIN.
  - 7 - ALL WIRING TO BE INSTALLED IN POWER LAMING FIRE PROTECTIVE SIGNALING CIRCUIT CABLE.
  - 8 - DETECTOR LOCATIONS MAY VARY A FEW FEET TO AVOID ANY LIGHT FIXTURE OR OBSTRUCTION. DO NOT INSTALL A SMOKE DETECTOR WITHIN 3'-0" OF A SUPPLY REGISTER.
  - 9 - CONDUCTORS FOR DETECTORS, MANUAL STATIONS AND SUPERVISORY DEVICES CAN BE INSTALLED IN THE SAME CONDUIT BUT MUST BE INSTALLED IN A SEPARATE CONDUIT FROM ALL INDICATING DEVICES (HORN,STROBE, SMOKE) AND FROM 120 VAC CIRCUITS.
  - 10 - ALL CONDUCTORS ARE TO BE PROPERLY TAGGED OR NUMBERED IN THE CONTROL PANEL AND CORRESPOND WITH CONTROL PANEL TERMINAL OR FIELD WIRE NUMBERS FOR IDENTIFICATION PURPOSES.
  - 11 - WIRING CIRCUITS MUST GO TO AND FROM EACH DEVICE BRANCH CIRCUITS ARE NOT PERMITTED. POLARITY MUST BE OBSERVED THROUGHOUT.
  - 12 - EXTREME CARE MUST BE TAKEN TO AVOID GROUND FAULT CONDITIONS OF ALL CONDUCTORS.
  - 13 - ALL DEVICES ARE TO BE FLUSH MOUNTED WHEREVER POSSIBLE.
  - 14 - HAVE CAREFUL MARKING OF EVERY APPLIANCE BE READILY VISIBLE ON THE OUTSIDE OF THE APPLIANCE.
  - 15 - MOUNT MANUAL STATIONS AT 48" ABOVE FINISHED FLOOR.
  - 16 - STROBE FEATURES SHALL INCLUDE BUT NOT LIMITED TO BUILT-IN VOLKAGE REGULATION, REVERSE POLARITY PROTECTION, PER POINT DIODE ISOLATION AND A LAMP-TEST SWITCH. THE UNIT SHALL BE FRONT-LIT AND CAPABLE OF LIGHTING ALL ITS INDICATORS. SIMULTANEOUSLY, UPON ACTIVATION OF ANY ALARM INDICATOR DEVICE, THE ANNUNCIATOR SHALL ACCORDINGLY DISPLAY THE LOCATION OF THE DEVICE IN ALARM.
  - 17 - PROVIDE PORTABLE FIRE EXTINGUISHERS IN ALL HALLWAYS.
  - 18 - THE FIRE SUPPRESSION SYSTEM SHALL BE INTERCONNECTED TO THE BUILDING FIRE ALARM SYSTEM. THE FIRE SUPPRESSION SYSTEM SHALL BE INTERCONNECTED TO THE BUILDING FIRE ALARM SYSTEM THROUGHOUT THE BUILDING.
  - 19 - PROVIDE COMPONENTS AND DEVICES AS SPECIFIED AND SHOWN ON PLANS AND SHOP DRAWINGS. ALL SHALL BE MOUNTED IN RECESSED JUNCTION BOXES UNLESS OTHERWISE NOTED. MORE THAN TWO VISIBLE NOTIFICATION APPLIANCES IN THE SAME ROOM OR ADJACENT SPACE WITHIN THE FIELD OF VIEW SHALL FLASH IN SYNCHRONIZATION. THIS REQUIREMENT SHALL NOT PRECLUDE SYNCHRONIZATION OF APPLIANCES THAT ARE NOT WITHIN THE SAME FIELD OF VIEW.

Drawing No. <b>F-2</b>	
Date: <b>NOV. 29, 2005</b>	
Scale: <b>1/8"=1'-0"</b>	
Drawn: <b>PAL</b>	
Checked: <b>C.FORD</b>	
File No. <b>BETH_A01</b>	
Philip Aaron Lacy, Architect 4013 21st. Place Temple Hills, Maryland 20748 Phone: 301-894-7979	
Project Title: <b>BETH SHALOM A.M.E. ZION CHURCH</b> 2501 RITCHIE ROAD DISTRICT HEIGHTS, MARYLAND 20735	
Certification:  Engineers: <b>CHARLES FORD &amp; ASSOCIATES</b> CONSULTING - ENGINEERS & PLANNERS 4325 GREENBAY AVE. N.W. WASH., D.C. (202) 722-4140	
Date:	
10-3-07	
07-8-08	
11/06/08	
REVISIONS:	
① PERMIT	
② PERMIT	
③ PERMIT	