

EXISTING STORM SEWER TABULATION

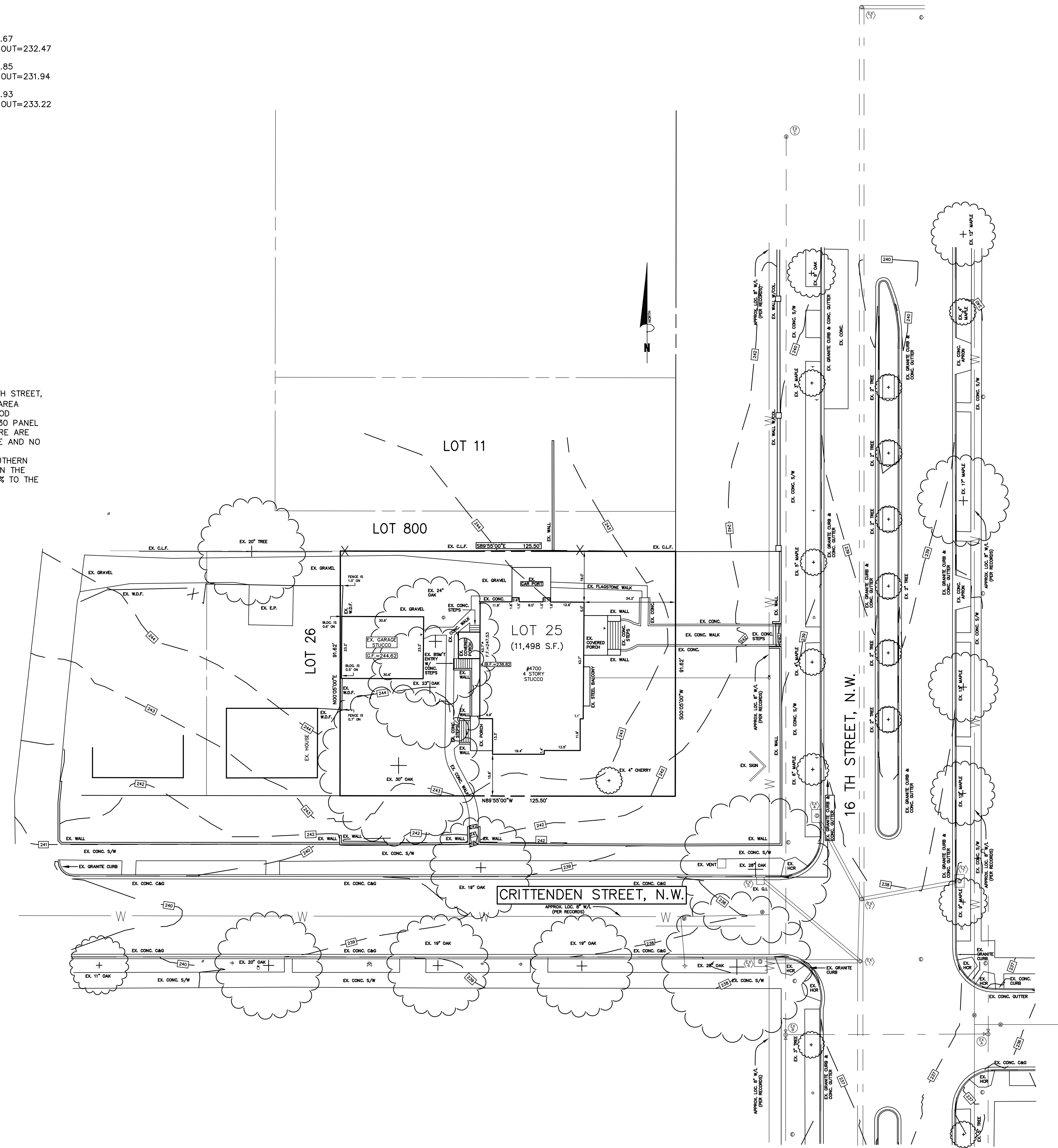
- EX TOP=237.58
24" INV. IN=229.93 (PER RECORDS)
24" INV. OUT=229.93 (PER RECORDS)
- EX TOP=237.79
21" INV. IN=230.27 (PER RECORDS)
24" INV. OUT=230.27 (PER RECORDS)
- EX TOP=240.91
15" INV. IN=233.54 (PER RECORDS)
21" INV. OUT=233.53 (PER RECORDS)
- EX TOP=238.23
12" INV. OUT=231.34
- EX TOP=237.67
12" INV. OUT=232.47
- EX TOP=237.85
15" INV. OUT=231.94
- EX TOP=237.93
15" INV. OUT=233.22

EXISTING SANITARY SEWER TABULATION

- EX TOP=236.54
15" INV. IN=225.62 (FR. NORTH)
15" INV. IN=225.52 (FR. B)
18" INV. OUT=224.95
- EX TOP=237.57
12" INV. IN=227.48 (FR. SOUTH, PER RECORDS)
12" INV. IN=227.32 (FR. C)
15" INV. OUT=226.75
- EX TOP=240.80
12" INV. OUT=230.36

NOTES/NARRATIVE:

THE SITE IS LOCATED IN THE DISTRICT OF COLUMBIA AT 4700 16TH STREET, N.W. BASED ON FEMA FLOOD MAPPING, THE FLOOD ZONE IS "C". AREA DETERMINED TO BE OF MINIMAL FLOODING AS SHOWN ON THE FLOOD INSURANCE RATE MAP FOR DISTRICT OF COLUMBIA PAME: 20 PF 30 PANEL NUMBER 1100010020 B EFFECTIVE DATE NOVEMBER 15, 1985. THERE ARE NO STREAMS OR WATER COURSED LOCATED ON OR NEAR THE SITE AND NO WETLANDS ON SITE NOR ADJACENT TO THE PROPERTY. THE CURRENT TOPOGRAPHY SHOWS THE SITE SLOPES ON THE SOUTHERN PORTION ON THE SITE TO THE SOUTH AT APPROXIMATELY 5.0%. ON THE EASTERN PORTION OF THE LOT, THE SITE SLOPES FROM 5.0%-7.5% TO THE EAST. THE AVERAGE SLOPES FOR THE SITE IS 4.5%



SYMBOLS

- ⊕ FIRE HYDRANT
- ⊕ WATER VALVE
- ⊕ GUYWIRE
- ⊕ WATER METER
- ⊕ GAS VALVE
- ⊕ LIGHT POLE
- ▲ BLDG. ENTRANCE
- ⊕ STORM MANHOLE
- ⊕ SANITARY MANHOLE
- ⊕ ELECTRIC MANHOLE
- ⊕ TELEPHONE MANHOLE
- ⊕ WATER MANHOLE
- ⊕ SIGN
- ⊕ POWER POLE

