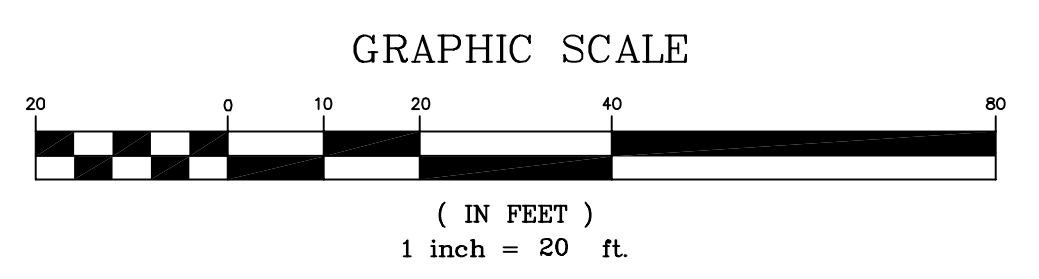
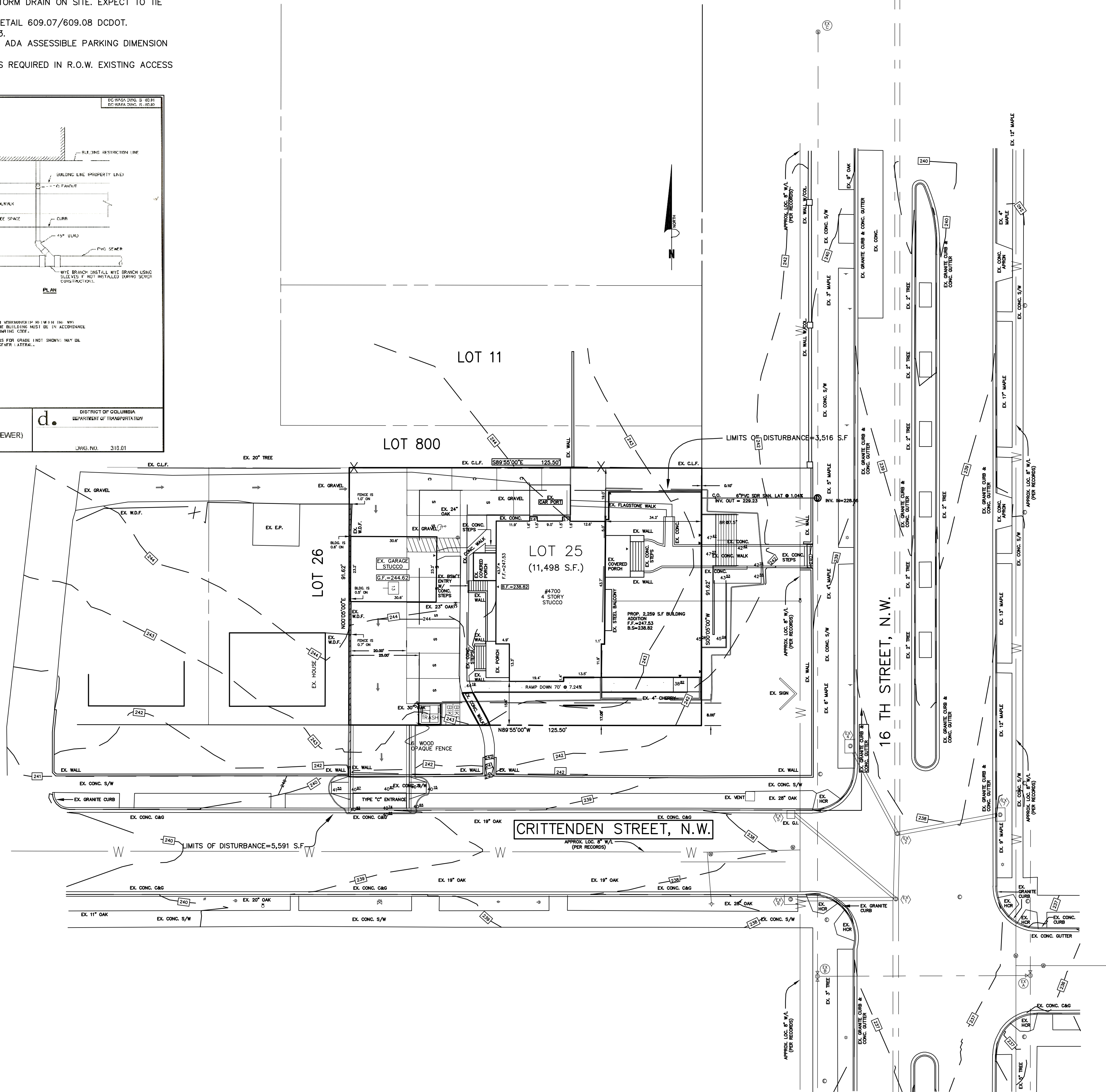
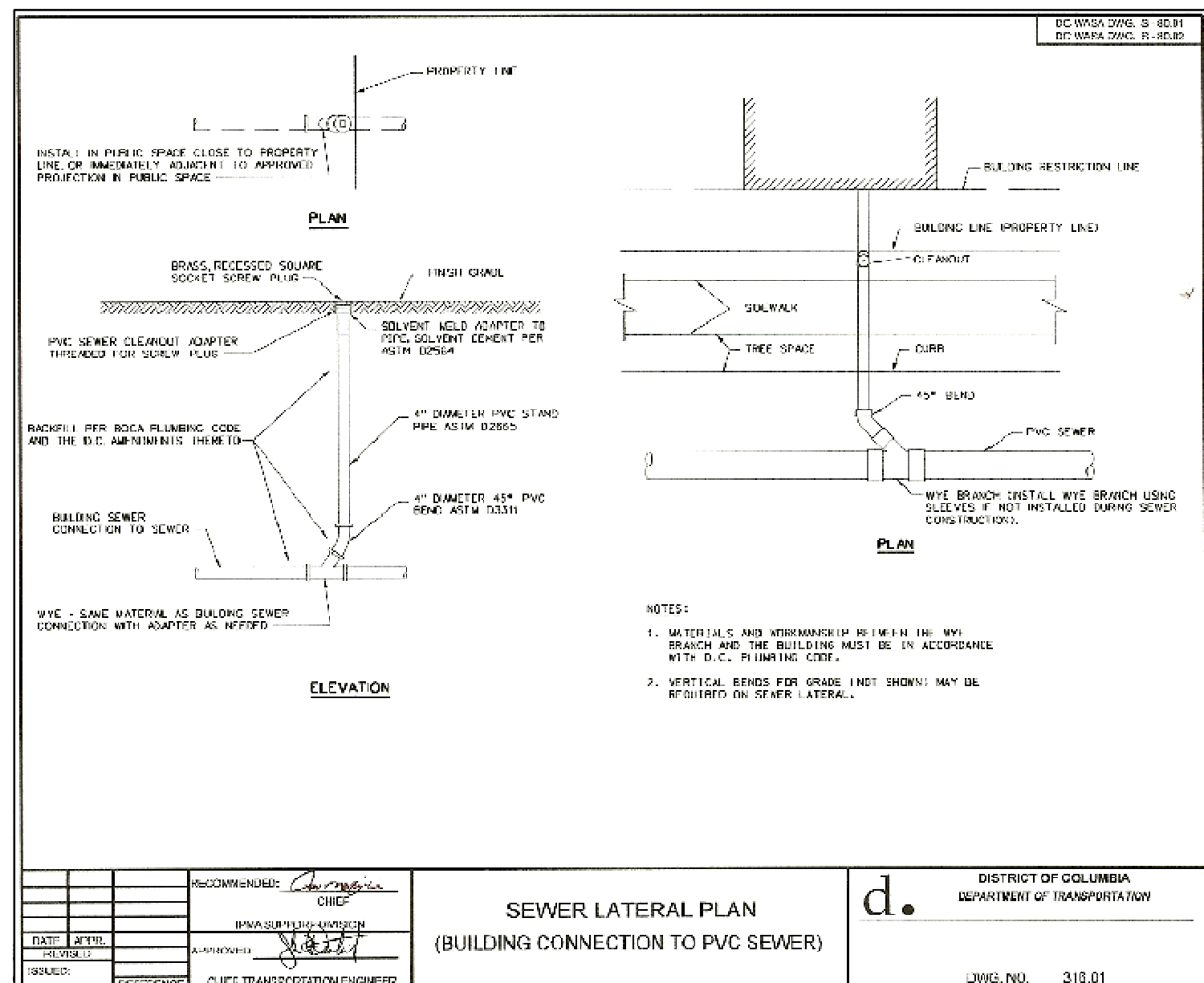


**NOTES**

- TOTAL LIMITS OF DISTURBANCE = 3,516 S.F.
- NO PORTIONS OF THE PROPOSED BUILDING ADDITION CROSSES INTO THE PUBLIC R.O.W.
- PROPOSED ON-SITE PAVEMENT FOR PARKING IS DESIGNATED AS POROUS PAVEMENT. SEE DETAIL ON SHEET C-2.00.
- EXISTING STRUCTURE ROOF DRAINS ARE TIED TO A STORM DRAIN ON SITE. EXPECT TO THE PROPOSED ROOF DRAINS TO THE SAME SYSTEM.
- WHEELCHAIR-BICYCLE RAMPS IN ACCORDANCE WITH DETAIL 609.07/609.08 DCDOT.
- PROPOSED ENTRANCE IS TYPE "C" PER DETAIL 504.03.
- ALL PARKING TO CONFORM TO DCDOT REQUIREMENTS. ADA ACCESSIBLE PARKING DIMENSION 19'X11' WITH A 5' WIDE SAFETY ZONE.
- PEDESTRIAN INGRESS/EGRESS FROM FRONT OF SITE IS REQUIRED IN R.O.W. EXISTING ACCESS IS ALSO FROM PUBLIC R.O.W.



**PA PHELPS CONSULTING**

PA PHELPS CONSULTING L.L.C.  
38 Poplar View Drive  
Stafford, Virginia 22554  
Phone: (540) 720-5988  
Fax: (540) 720-4173  
email: paphelpsconsulting@paphelps.net  
paphelps@paphelpsconsulting.com  
© P.A. Phelps Consulting, L.L.C.

**WASHINGTON SEVENTH DAY BAPTIST CHURCH**

SITE PLAN

DISTRICT OF COLUMBIA

PLAN STATUS		
7/15/08	REV. PER DOT	COMMENTS
DATE	DESCRIPTION	
PAP DESIGN	PAP DRAWN	ACM CHKD
SCALE	H: 1"=20'	
	V: 1"=2'	
JOB No.	PAP-700125	
DATE :	AUGUST, 2007	
FILE No.	2007-02-WBC-DC	
SHEET	C-4.00	