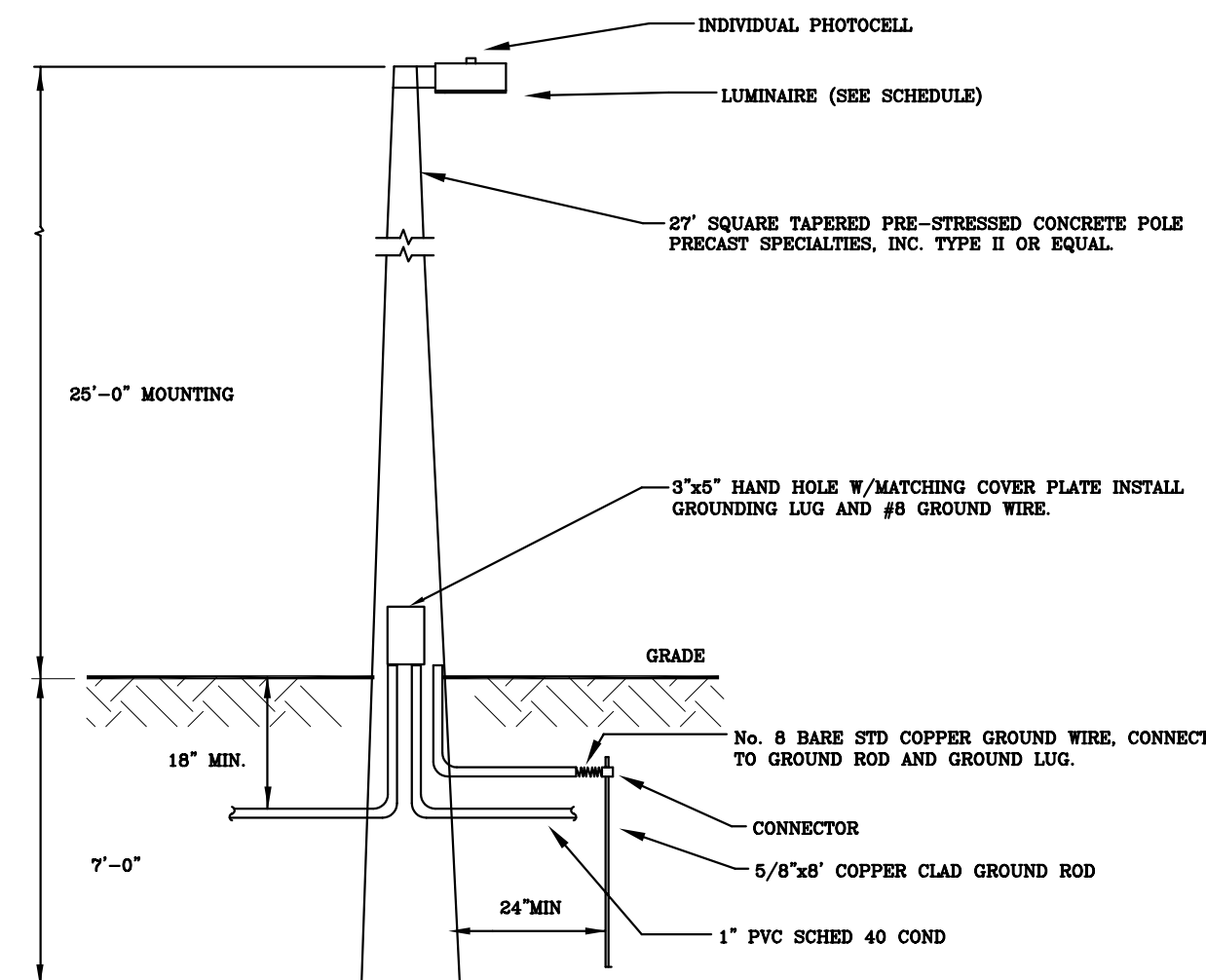
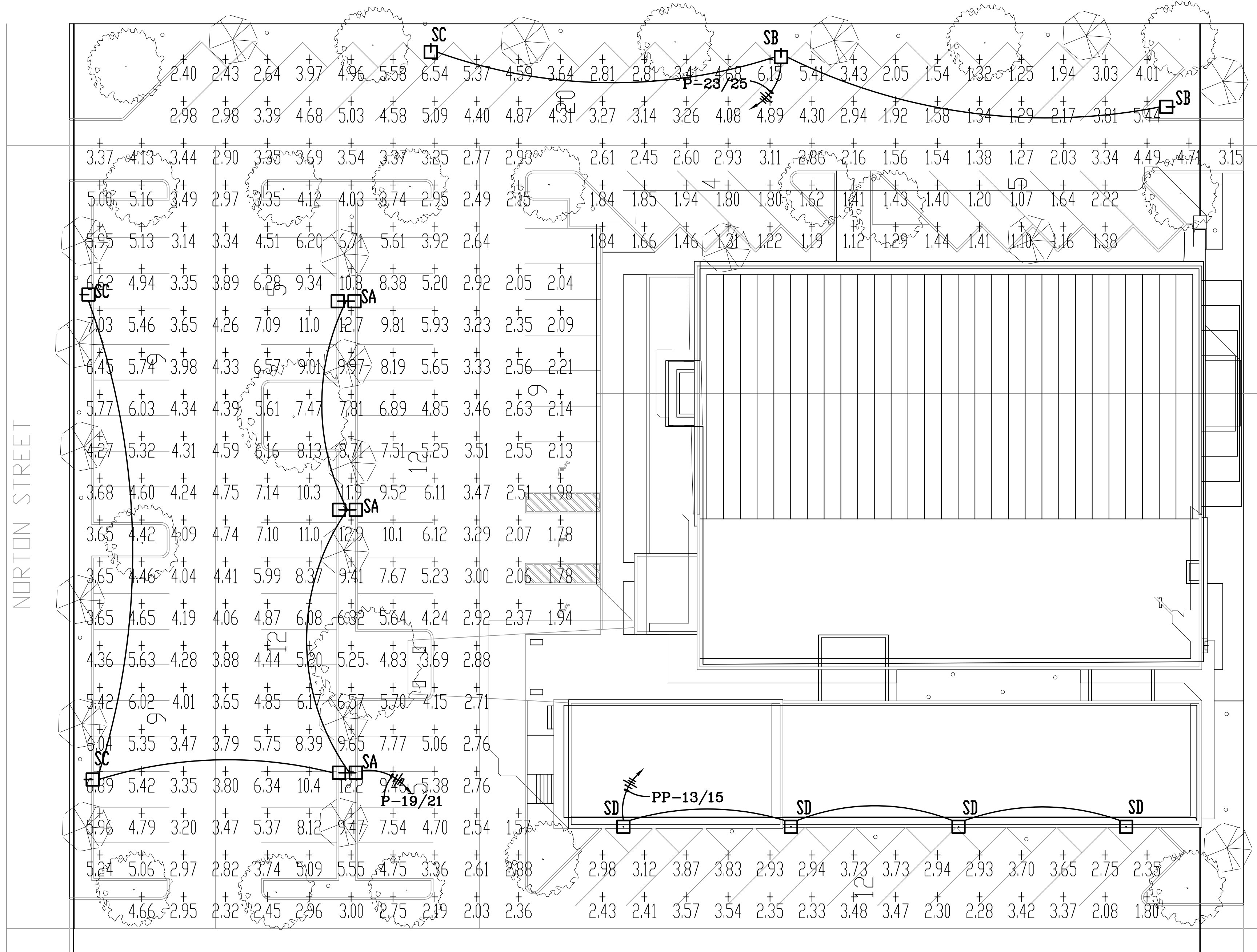


COPYRIGHT - 2008 - RAMOSMARTINEZ architects, inc. All ideas, designs and details indicated or represented by this drawing, created and developed for use on this project, are owned by, and are legal property of RamosMartinez Architects, Inc. Use, reproduction, distribution or alteration is prohibited without written authorization from the Architect.



TYPICAL LIGHT POLE DETAIL
NO SCALE

SPECIAL SITE LIGHTING NOTE:
THIS CONTRACTOR SHALL PROVIDE SHOP DRAWINGS WITH A NEW POINT BY POINT PRIOR INSTALLATION OF SITE LIGHTING (PARKING AREA) AND A LETTER, SIGNED AND SEALED BY A P.E. ENGINEER. AFTER INSTALLATION OF LIGHTS TO CERTIFY THE FOOT CANDLE LEVELS AT THE PARKING AREA ARE IN COMPLIANCE WITH THE MINIMUM VALUES REQUIRED BY THE CITY ORDINANCE.



CALCULATION SUMMARY										
AREA NAME	DIMENSIONS	GRID / TYPE	# PTS	SPAC	GROUP	AVE	MAX	MIN	MAX/MIN	AVE/MIN
Site	335.20x226.50ft	Grid / H-H	330	10.00	(+) Site	4.22	12.90	1.07	12.04	3.93

Church	LUMINAIRE	SCHEDULE	LAMP	LUMENS	MOUNTING/BALLAST	LLF	QTY
SA	□	KIM LIGHTING 2B/AR4/400SMH/PALS/VSF-2B-DB-P	(2) 400SMH	40000	25' mtg. ht.	0.65	3
SB	▫	KIM LIGHTING 1A/AR4/400SMH/PALS/VSF-1A-DB-P	(1) 400SMH	40000	25' mtg. ht.	0.65	2
SC	▫	KIM LIGHTING 1A/AR2/400SMH/PALS/VSF-1A-DB-P	(1) 400SMH	40000	25' mtg. ht.	0.65	3
SD	□	Hubbell PQM175H-x2x	(1) MH175/U	14000	13' mtg. ht.	0.65	4

ELECTRICAL SITE PLAN
SCALE: 1/8" = 1'-0"

DANIEL F. GUTIERREZ, P.E.
 LIC. #049086
 7328 SW 82 ST. B-214
 MIAMI FL 33143
 PH: (786) 499-4167
 FAX: (305) 667-5262
 CELL: 786-499-4167

DESIGN - INSPECTIONS

RAMOSMARTINEZ
 ARCHITECTS
 NEW YORK
 985-548-5039
 305-548-5039
 www.ramosmartinez.com
 TELEPHONE: 985-548-5039
 FACSIMILE: 305-548-5039
 WEBSITE: www.ramosmartinez.com
 MIAMI
 10th AVENUE
 MIAMI, FL 33135

First Haitian Free Church of Nazarene by Faith

IN
 ORLANDO FLORIDA

**FIRST HAITIAN
 FREE CHURCH
 OF NAZARENE**

308 SOUTH
 ORANGE BLOSSOM TRAIL
 ORLANDO, FLORIDA

REVISIONS:
 1 BLDG DEPT COMM
 03-26-09

COMM. NO. 08-103

DATE:

DRAWN BY:

CHECKED BY:

1
E-16
 1 OF 8