

WALL LEGEND:

- UNRAISED WALL
- 1 HR. WALL
- 2 HR. WALL

DOOR LABELS:

- Ⓟ 1' LABEL (90 Min.)
- Ⓞ 1' LABEL (45 Min.)
- Ⓢ 20 MIN. DOOR
- Ⓢ 60 MIN. DOOR
- Ⓢ NOT RATED

OCCUPANT LOAD BUILDING ONE

Business Areas (100 s.f. per occ. gross)	Assembly w/ fixed seats (15' per occ. net)	Education Areas (20 s.f. per occ.)	Storage Areas (100 s.f. per occ. gross)	Total
Floor Area Load	Inches	Area Load	Area Load	Per Floor DWG.
1 3559 39	12052 670	1393 70	554 2	780
2 1124 11	2046 589			780
TOTAL		670	70	2

OCCUPANT LOAD BUILDING TWO

Business Areas (100 s.f. per occ. gross)	Assembly Areas (Concentrated 5 net)	Education Areas (20 s.f. per occ.)	Storage Areas (100 s.f. per occ. gross)	Kitchen Areas (200 s.f. per occ. gross)	Total
Floor Area Load	Area	Area Load	Area Load	Area Load	Per Floor DWG.
1 1124 11	2046 589	741 4	593 4	593 4	590
TOTAL					4

EGRESS CALCULATION :

AN AUTOMATIC SPRINKLER SYSTEM IS REQUIRED
 EXIT CALCULATIONS: BUILDING ONE
 LEVEL EGRESS: ASSEMBLY / ASSEMBLY / ASSEMBLY
 R. SIDE DOOR 68" WIDTH / 2 = 340 PERSONS
 L. SIDE DOOR 1, 32" WIDTH / 2 = 160 PERSONS
 L. SIDE DOOR 2, 32" WIDTH / 2 = 160 PERSONS
 FRONT DOOR 68" WIDTH / 2 = 340 PERSONS
 FRONT ENTRY STAIRS 2(51") = 102 WIDTH / .3 = 340 PERSONS
 TOTAL LEVEL EGRESS GROUND LEVEL = 1000 PERSON CAPACITY

AN AUTOMATIC SPRINKLER SYSTEM IS REQUIRED
 EXIT CALCULATIONS: BUILDING ONE
 LEVEL EGRESS: BUSINESS / EDUCATION / STORAGE AREAS
 FRONT DOOR 34" WIDTH / 2 = 170 PERSONS
 REAR DOOR 48" WIDTH / 2 = 170 PERSONS
 SIDE DOOR 68" WIDTH / 2 = 340 PERSONS
 TOTAL LEVEL EGRESS GROUND LEVEL = 680 PERSON CAPACITY

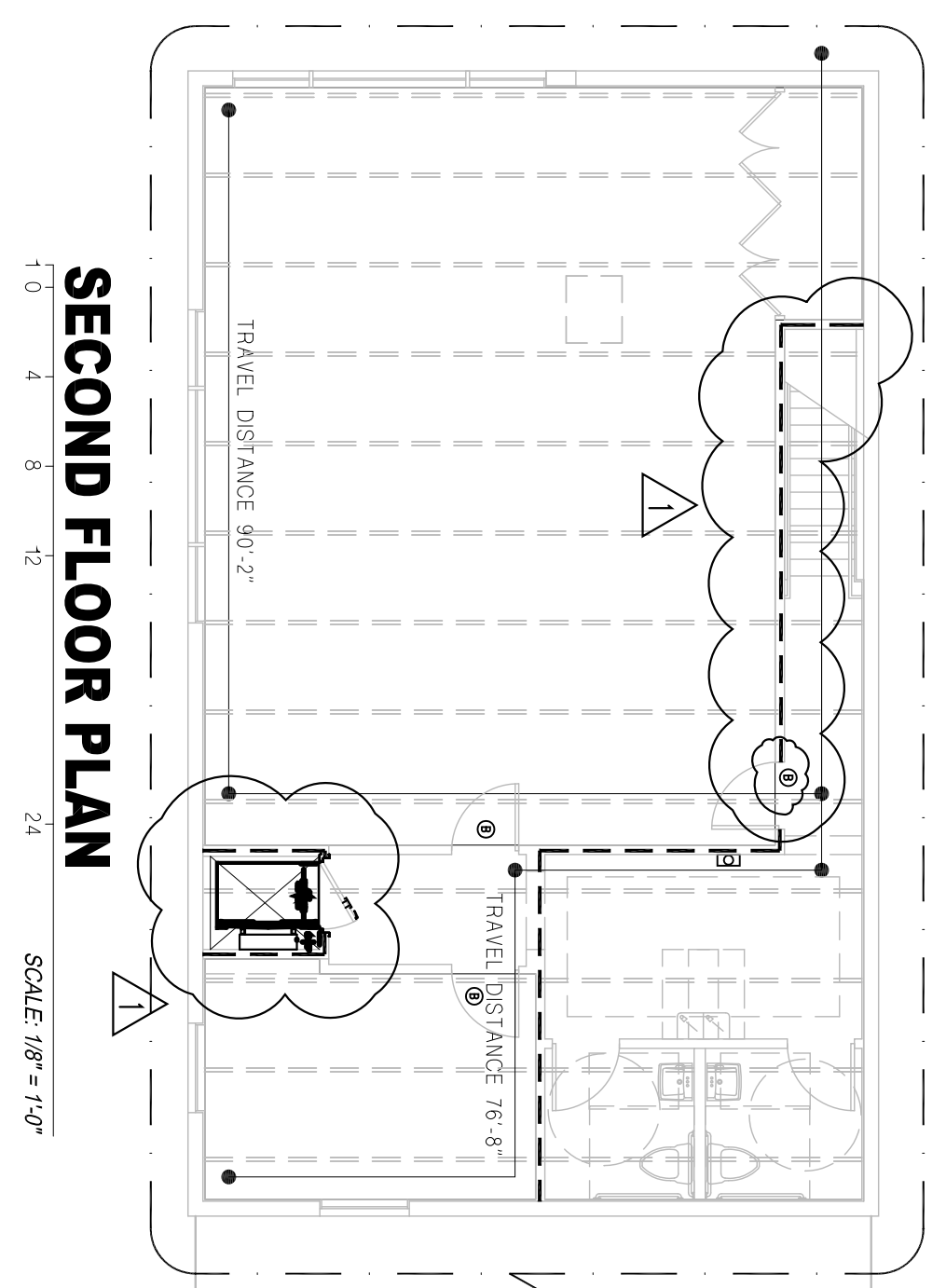
AN AUTOMATIC SPRINKLER SYSTEM IS REQUIRED
 EXIT CALCULATIONS: BUILDING TWO
 LEVEL EGRESS: ASSEMBLY / KITCHEN / BUSINESS AREAS
 SIDE DOOR 1, 68" WIDTH / 2 = 340 PERSONS
 SIDE DOOR 2, 68" WIDTH / 2 = 340 PERSONS
 REAR DOOR 34" WIDTH / 2 = 170 PERSONS
 TOTAL LEVEL EGRESS GROUND LEVEL = 850 PERSON CAPACITY

NOTE: EVERY ASSEMBLY ROOM OR SPACE SHALL HAVE THE OCCUPANT LOAD ON THE FLOOR DESIGNATED IN A CONSPICUOUS PLACE. NEAR THE MAIN ENTRANCE OR EXIT. THE OCCUPANT LOAD SIGN SHALL BE PERMANENTLY MAINTAINED BY OWNER'S AUTHORIZED AGENT AS PER FBC 1004.3, 2004 AND REFER TO NFPA 1012.7.9.3

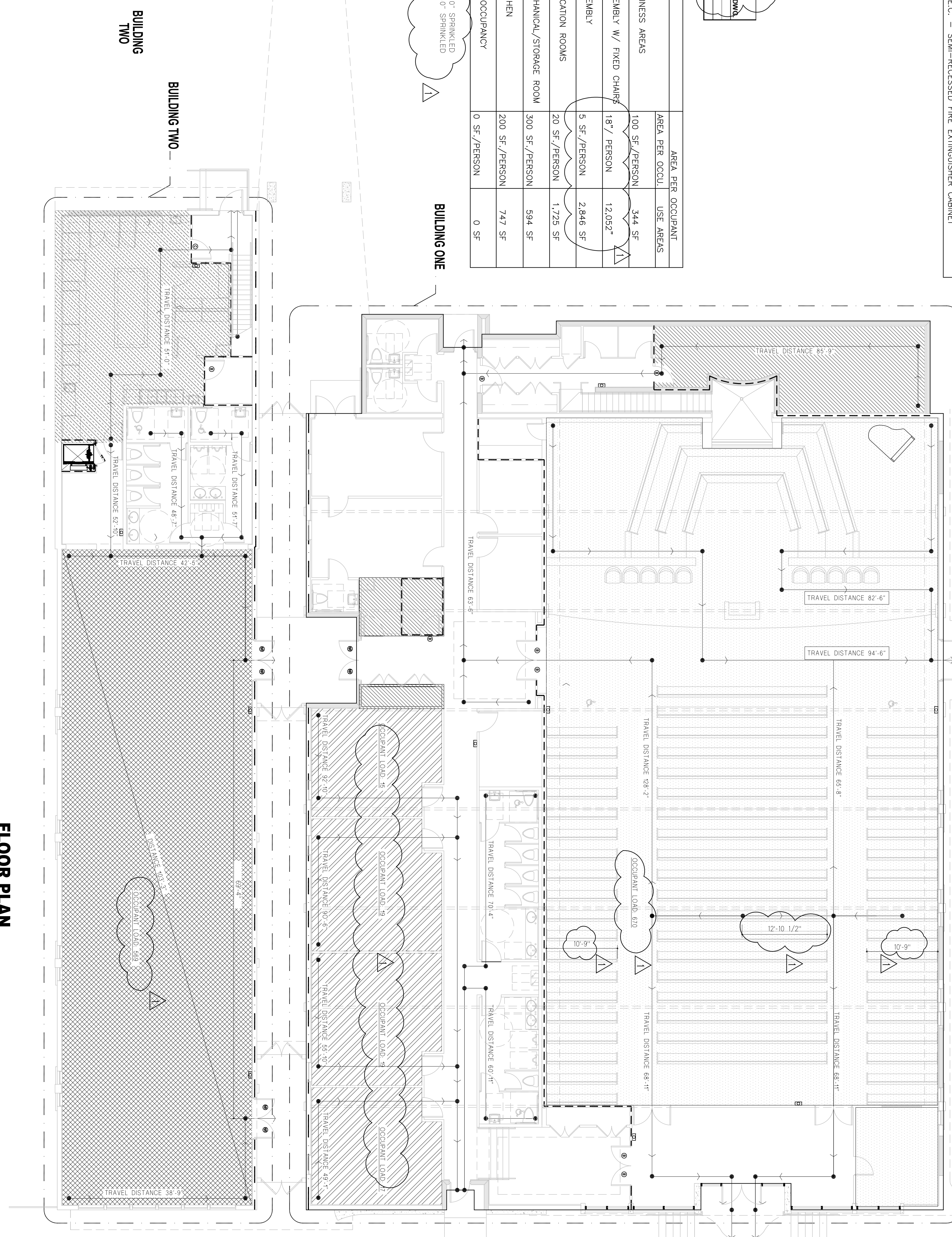
FIRE EXTINGUISHER REQUIREMENTS (SEE DET. 7/A-11.1)
 CLASSIFICATION OF HAZARD CONTENTS: N.F.P.A. 101-30.15
 LIGHT HAZARD MODERATE OCCUPANCY
 MINIMUM RATED SINGLE EXTINGUISHER: 2-A
 MINIMUM FLOOR AREA PER UNIT: 3,000 S.F.
 MAXIMUM TRAVE DISTANCE TO EXTINGUISHER: 75'-0"
 LIGHT HAZARD AREAS - MIN. ONE (1) EXTINGUISHER PROVIDED
 FLAMMABLE STORAGE:
 FIRST FLOOR BUILDING ONE:
 TOTAL AREA PER FLOOR: 12,888 S.F. / 3,000 S.F. = 4 EXTINGUISHERS
 TOTAL PROVIDED: 6 EXTINGUISHERS
 FIRST FLOOR BUILDING TWO:
 TOTAL AREA PER FLOOR: 4,597 S.F. / 3,000 S.F. = 2 EXTINGUISHERS
 TOTAL PROVIDED: 4 EXTINGUISHERS
 SECOND FLOOR BUILDING TWO:
 TOTAL AREA PER FLOOR: 1,757 S.F. / 3,000 S.F. = 1 EXTINGUISHERS
 TOTAL PROVIDED: 1 EXTINGUISHERS
 F.E.C. - SEMI-RECESSED FIRE EXTINGUISHER CABINET

AN AUTOMATIC SPRINKLER SYSTEM IS REQUIRED
 EXIT CALCULATIONS: BUILDING TWO
 LEVEL EGRESS: SECOND LEVEL
 STAR NO. 1
 36" CLEAR WIDTH / .3" = 120 PERSONS
 TOTAL STAR EGRESS SECOND LEVEL = 120 PERSON CAPACITY
 REAR DOOR 34" WIDTH / 2 = 170 PERSONS
 TOTAL LEVEL EGRESS GROUND LEVEL = 170 PERSON CAPACITY
 NOTE: FIRE SPRINKLER SYSTEM BY OTHERS (N.I.C.)

OCCUPANCY USE:	AREA PER OCCU.	USE AREAS
BUSINESS AREAS	100 SF./PERSON	344 SF
ASSEMBLY W/ FIXED CHAIRS	18"/ PERSON	12,052"
ASSEMBLY	5 SF./PERSON	2,846 SF
EDUCATION ROOMS	20 SF./PERSON	1,725 SF
MECHANICAL/STORAGE ROOM	300 SF./PERSON	594 SF
KITCHEN	200 SF./PERSON	747 SF
NO OCCUPANCY	0 SF./PERSON	0 SF



SECOND FLOOR PLAN
 SCALE: 1/8" = 1'-0"



FLOOR PLAN
 SCALE: 1/8" = 1'-0"