



MIAMI-DADE COUNTY
BUILDING CODE COMPLIANCE OFFICE (BCCO)
PRODUCT CONTROL DIVISION

MIAMI-DADE COUNTY, FLORIDA
METRO-DADE FLAGLER BUILDING
140 WEST FLAGLER STREET, SUITE 1603
MIAMI, FLORIDA 33130-1563
 (305) 375-2901 FAX (305) 372-6339

NOTICE OF ACCEPTANCE (NOA)

www.maimidade.gov/buildingcode

PGT Industries
1070 Technology Drive
Nokomis, FL 34275

SCOPE:

This NOA is being issued under the applicable rules and regulations governing the use of construction materials. The documentation submitted has been reviewed by Miami-Dade County Product Control Division and accepted by the Board of Rules and Appeals (BORA) to be used in Miami Dade County and other areas where allowed by the Authority Having Jurisdiction (AHJ).

This NOA shall not be valid after the expiration date stated below. The Miami-Dade County Product Control Division (In Miami Dade County) and/or the AHJ (in areas other than Miami Dade County) reserve the right to have this product or material tested for quality assurance purposes. If this product or material fails to perform in the accepted manner, the manufacturer will incur the expense of such testing and the AHJ may immediately revoke, modify, or suspend the use of such product or material within their jurisdiction. BORA reserves the right to revoke this acceptance, if it is determined by Miami-Dade County Product Control Division that this product or material fails to meet the requirements of the applicable building code. This product is approved as described herein, and has been designed to comply with the Florida Building Code, including the High Velocity Hurricane Zone.

DESCRIPTION: Series 640 Aluminum Projected Window - N.I.

APPROVAL DOCUMENT: Drawing No. **7052-8**, titled "Alum. Projected Window, Non-Impact", sheets 1 through 11 of 11, prepared by manufacturer, dated 02/19/03 with revision "B" dated 09/02/08, signed and sealed by Lucas A. Turner, P.E., bearing the Miami-Dade County Product Control Revision stamp with the Notice of Acceptance number and expiration date by the Miami-Dade County Product Control Division.

MISSILE IMPACT RATING: None.

LABELING: Each unit shall bear a permanent label with the manufacturer's name or logo, city, state and following statement: "Miami-Dade County Product Control Approved", unless otherwise noted herein.

RENEWAL of this NOA shall be considered after a renewal application has been filed and there has been no change in the applicable building code negatively affecting the performance of this product.

TERMINATION of this NOA will occur after the expiration date or if there has been a revision or change in the materials, use, and/or manufacture of the product or process. Misuse of this NOA as an endorsement of any product, for sales, advertising or any other purposes shall automatically terminate this NOA. Failure to comply with any section of this NOA shall be cause for termination and removal of NOA.

ADVERTISEMENT: The NOA number preceded by the words Miami-Dade County, Florida, and followed by the expiration date may be displayed in advertising literature. If any portion of the NOA is displayed, then it shall be done in its entirety.

INSPECTION: A copy of this entire NOA shall be provided to the user by the manufacturer or its distributors and shall be available for inspection at the job site at the request of the Building Official.

This NOA **revises and renews** NOA # **05-1129.12** and consists of this page 1 and evidence pages E-1 and E-2, as well as approval document mentioned above.

The submitted documentation was reviewed by **Manuel Perez, P.E.**



NOA No. 08-0709.15
Expiration Date: November 20, 2013
Approval Date: October 16, 2008
 Page 1

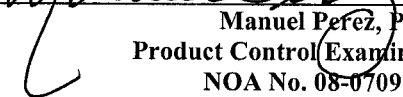
NOTICE OF ACCEPTANCE: EVIDENCE SUBMITTED

A. DRAWINGS

1. Manufacturer's die drawings and sections.
2. Drawing No **7052-8**, Sheets 1 through 11 of 11, titled "Alum. Projected Window, Non-Impact", dated 02/19/03 with revision B dated 09/02/08, prepared by Mfr., signed and sealed by Lucas A. Turner, P.E.

B. TESTS

1. Test reports on: 1) Air Infiltration Test, per FBC, TAS 202-94
2) Uniform Static Air Pressure Test, Loading per FBC, TAS 202-94
3) Water Resistance Test, per FBC, TAS 202-94
4) Large Missile Impact Test per FBC, TAS 201-94
5) Cyclic Wind Pressure Loading per FBC, TAS 203-94
6) Forced Entry Test, per FBC 2411 3.2.1 and TAS 202-94
along with marked-up drawings and installation diagram of an aluminum fixed window muller to a projected window with 9/16" HS laminated, prepared by Fenestration Testing Laboratory, Inc., Test Report No. **FTL- 3724** dated 2/28/03, signed and sealed by Joseph Chan, P.E. *(Submitted under NOA# 03-0612.05)*
2. Test reports on: 1) Air Infiltration Test, per FBC, TAS 202-94
2) Uniform Static Air Pressure Test, Loading per FBC, TAS 202-94
3) Water Resistance Test, per FBC, TAS 202-94
4) Forced Entry Test, per FBC 2411 3.2.1 and TAS 202-94
along with marked-up drawings and installation diagram of an aluminum fixed window muller to a projected window with 3/16" temp. glass, prepared by Fenestration Testing Laboratory, Inc., Test Report No. **FTL-3725** dated 2/28/03, signed and sealed by Joseph Chan, P.E. *(Submitted under NOA# 03-0612.05)*
3. Test reports on: 1) Air Infiltration Test, per FBC, TAS 202-94
2) Uniform Static Air Pressure Test, Loading per FBC, TAS 202-94
3) Water Resistance Test, per FBC, TAS 202-94
4) Forced Entry Test, per FBC 2411 3.2.1 and TAS 202-94
along with marked-up drawings and installation diagram of an aluminum fixed window muller to a projected window with 3/16" ann. glass, prepared by Fenestration Testing Laboratory, Inc., Test Report No. **FTL-3726** dated 2/28/03, signed and sealed by Joseph Chan, P.E. *(Submitted under NOA# 03-0612.05)*
4. Test reports on: 1) Uniform Static Air Pressure Test, Loading per FBC, TAS 202-94
2) Large Missile Impact Test per FBC, TAS 201-94
3) Cyclic Wind Pressure Loading per FBC, TAS 203-94
along with marked-up drawings and installation diagram of an aluminum fixed window muller to a projected window with 5/16" HS laminated glass, prepared by Fenestration Testing Laboratory, Inc., Test Report No. **FTL-3727** dated 2/28/03, signed and sealed by Joseph Chan, P.E. *(Submitted under NOA# 03-0612.05)*


Manuel Perez, P.E.
Product Control Examiner
NOA No. 08-0709.15
Expiration Date: November 20, 2013
Approval Date: October 16, 2008

NOTICE OF ACCEPTANCE: EVIDENCE SUBMITTED

B. TESTS (CONTINUED)

5. Test reports on: 1) Uniform Static Air Pressure Test, Loading per FBC, TAS 202-94 along with marked-up drawings and installation diagram of an aluminum projected window with ½” overall (2 lites of 1/8” ann.) insulated glass, prepared by Fenestration Testing Laboratory, Inc., Test Report No. **FTL-3730** dated 2/28/03, signed and sealed by Joseph Chan, P.E. *(Submitted under NOA# 03-0612.05)*
6. Test reports on: 1) Uniform Static Air Pressure Test, Loading per FBC, TAS 202-94 along with marked-up drawings and installation diagram of an aluminum projected window with 1/8” ann. glass, prepared by Fenestration Testing Laboratory, Inc., Test Report No. **FTL-3731** dated 3/4/03, signed and sealed by Joseph Chan, P.E. *(Submitted under NOA# 03-0612.05)*

C. CALCULATIONS

1. Anchor verification calculations and structural analysis, complying with FBC-2004, dated 10/18/05, prepared, signed and sealed by Lucas A. Turner, P.E.
Complies with ASTM E1300-02

D. QUALITY ASSURANCE

1. Miami Dade Building Code Compliance Office (BCCO).

E. MATERIAL CERTIFICATIONS

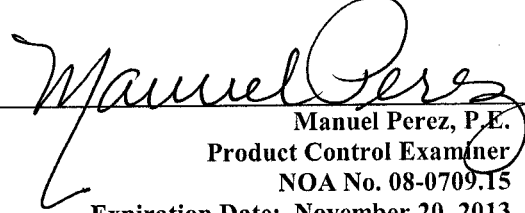
1. None.

F. STATEMENTS

1. Statement letter of conformance, dated 6/10/03, signed and sealed by Lucas A. Turner, P.E.
2. Statement letter of no financial interest, dated 6/10/03, signed and sealed by Lucas A. Turner, P.E.
3. Statement letter from original engineer stating that there are no changes to the product and that it conforms to the FBC, dated 6/26/08, signed and sealed by Lucas A. Turner, P.E.

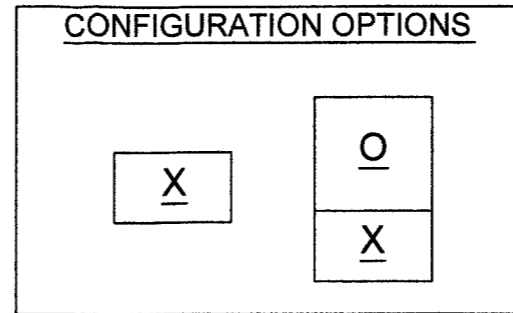
G. OTHER

1. Notice of Acceptance No. **05-1129.12**, issued to PGT Industries for their Series “640” Aluminum Projected Window – N.I., approved on 03/16/06 and expiring on 11/20/08.


Manuel Perez, P.E.
Product Control Examiner
NOA No. 08-0709.15
Expiration Date: November 20, 2013
Approval Date: October 16, 2008

NOTES: NON-IMPACT WINDOWS

1. GLAZING OPTIONS:
 - A. 3/16" ANNEALED GLASS
 - B. 3/16" TEMPERED GLASS
 - C. 1/2" I.G. GLASS (1/8" ANNEALED, 1/4" SPACE, 1/8" ANNEALED)
 - D. 1/8" ANNEALED (DSB) GLASS



^A 2. CONFIGURATIONS: X. PROJECTED WINDOW MAY ALSO BE USED WITH THE CASEMENT FIXED WINDOW IN OX CONFIGURATION, FOR FIXED WINDOW DETAILS PLEASE SEE SEPARATE MIAMI-DADE COUNTY NOA.

3. DESIGN PRESSURE RATINGS / COMPARATIVE ANALYSIS TABLES:
 - A. NEGATIVE DESIGN LOADS BASED ON TESTED PRESSURE AND GLASS TABLES ASTM E 1300-98.
 - B. POSITIVE DESIGN LOADS BASED ON WATER TEST PRESSURE AND GLASS TABLES ASTM E 1300-98.
 - C. DESIGN PRESSURES UNDER 40 P.S.F. NOT APPLICABLE IN MIAMI-DADE COUNTY.

^B 4. ANCHORAGE: THE 33 1/3% STRESS INCREASE HAS NOT BEEN USED IN THE DESIGN OF THIS PRODUCT. SEE SHEETS 3 AND 12 FOR ADDITIONAL ANCHORAGE INFORMATION.

- JAMBS "X": MAX. 8" FROM CORNERS
JAMBS "OX": MAX. 4" FROM "O" CORNERS
 MAX. 13" O.C.
 (2) ANCHORS 3" APART AT MID-SPAN ON FIXED LITE ONLY
 MAX. 4" & 7" ON EACH SIDE OF MEETING RAIL
 MAX. 8" FROM "X" CORNERS

- HEAD & SILL: MAX. 4" FROM CORNERS
 MAX. 13" SPACING
 (2) ANCHORS 3" APART AT MID-SPAN

SEE SHEET 11 FOR APPROVED ANCHORS. 1/4" TAPCONS OR 1/4" SS4 CRETE-FLEX MAY BE USED IN CONCRETE OR WOOD APPLICATIONS TO ACHIEVE THE DESIGN PRESSURES SHOWN IN SHEETS 4 THROUGH 7. SEE SHEETS 4 THROUGH 7 FOR DESIGN PRESSURE LIMITATIONS WHEN ANCHORING WITH #12 SCREWS.

5. MIAMI-DADE COUNTY APPROVED SHUTTERS ARE REQUIRED IN MIAMI-DADE COUNTY AND WHERE IMPACT RESISTANCE IS REQUIRED.
6. NARROW JOINT SEALANT IS USED ON ALL FOUR CORNERS OF THE FRAME.
7. REFERENCE TEST REPORTS: FTL-3725, FTL-3726, FTL-3730 AND FTL-3731

NOA DRAWING TABLE OF CONTENTS	
	SHEET
NOTES.....	1
GLAZING DETAILS.....	2
ELEVATIONS.....	3
DESIGN PRESSURE TABLES.....	4-7
SECTIONS.....	8
CORNER CONSTRUCTION.....	9
EXTRUSION PROFILES.....	9-10
PARTS LIST.....	10
ANCHORAGE.....	11

PRODUCT REVISED
 as complying with the Florida
 Building Code
 Acceptance No. 08-0709.15
 Expiration Date: Nov. 20, 2013
 By: *Manuel Perez*
 Miami Dade Product Control
 Division

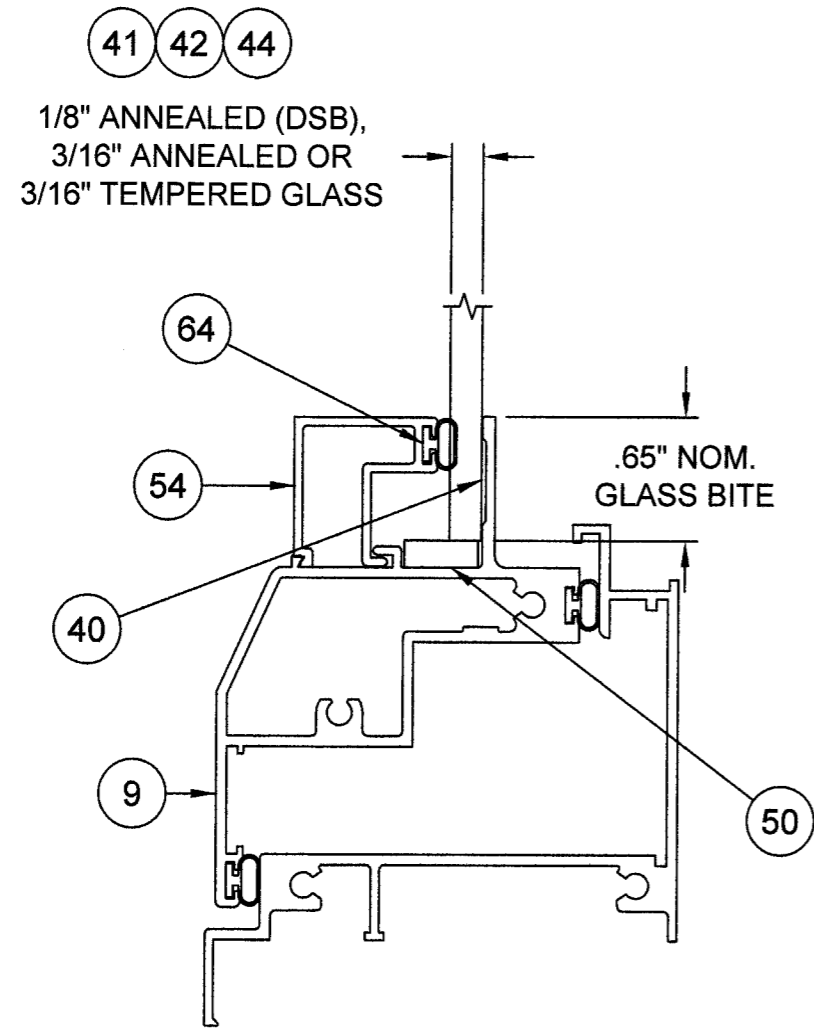
LL
 9/12/08

Revsd By:	Date:	Revisions:	
F.K.	10/18/05	A REVISE DP NOTE 3 AND ANCHORAGE NOTE 4	
D.G.	09/02/08	B CHANGED NOTE 2 AND 4, REMOVED "O" OPTION	
Drawn By:	Date:	Checked By:	Date:
F.K.	02/19/03		

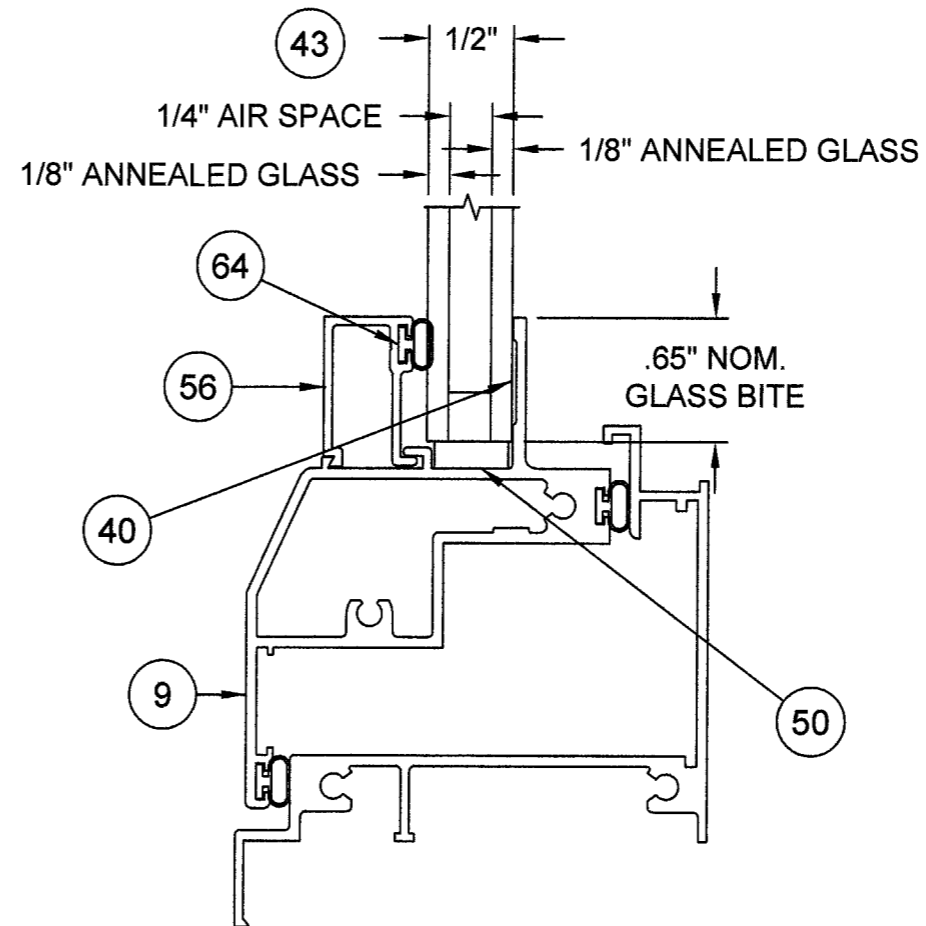
1070 TECHNOLOGY DRIVE
 NOKOMIS, FL 34275
 P.O. BOX 1529
 NOKOMIS, FL 34274

Description: NOTES AND TABLE OF CONTENTS			
Title: ALUM. PROJECTED WINDOW, NON-IMPACT			
Series/Model: CA-640	Scale: NTS	Sheet: 1 of 11	Drawing No. 7052-8
			Rev: B

Lucas A. Turner, P.E.
 PE #58201
 Mechanical



1/8" OR 3/16" GLAZING DETAIL



1/2" I.G. GLAZING DETAIL

PRODUCT REVISION
as complying with the Florida
Building Code
Approval No. 08-0709.15
Expiration Date NOV. 20, 2013
By: *Manuel Perez*
Mechanical Product Control
Division

L.T.
9/2/08

Revsd By: F.K.	Date: 10/18/05	Revisions: A	NO CHANGE THIS SHEET
Revsd By: D.G.	Date: 09/02/08	Revisions: B	NO CHANGE THIS SHEET
Revsd By:	Date:	Revisions:	
Drawn By: F.K.	Date: 02/19/03	Checked By:	Date:

1070 TECHNOLOGY DRIVE
NOKOMIS, FL 34275

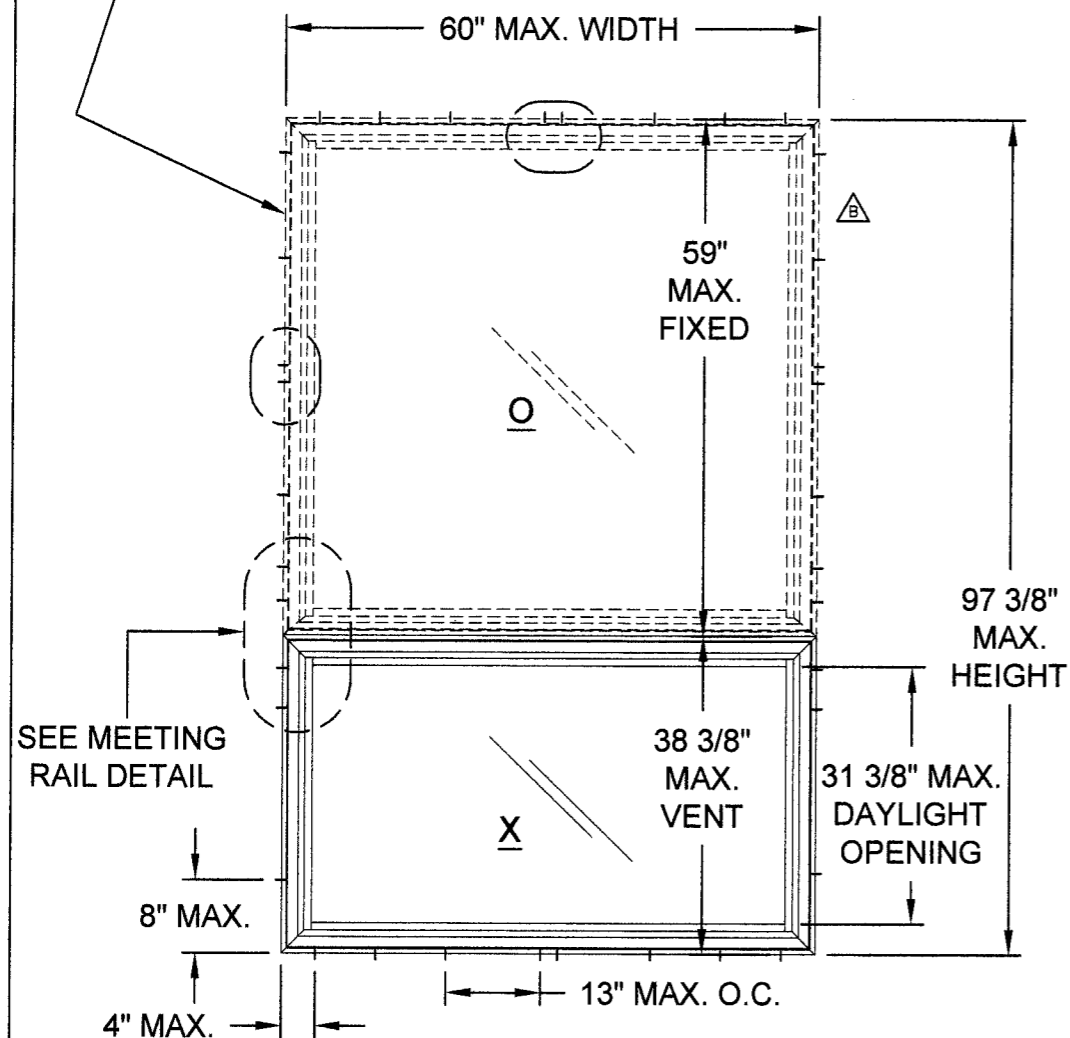
P.O. BOX 1529
NOKOMIS, FL 34274



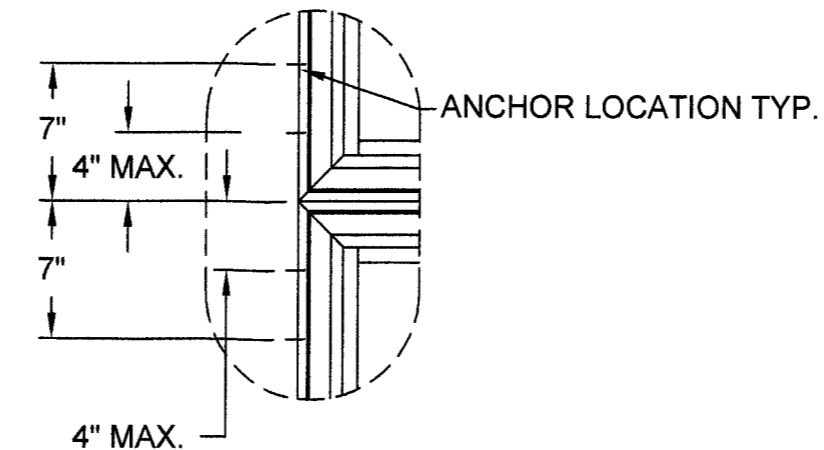
Description: NOTES AND GLAZING DETAILS			
Title: ALUM. PROJECTED WINDOW, NON-IMPACT			
Series/Model: CA-640	Scale: NTS	Sheet: 2 of 11	Drawing No. 7052-8
			Rev: B

Lucas A. Turner, P.E.
PE #58201
Mechanical

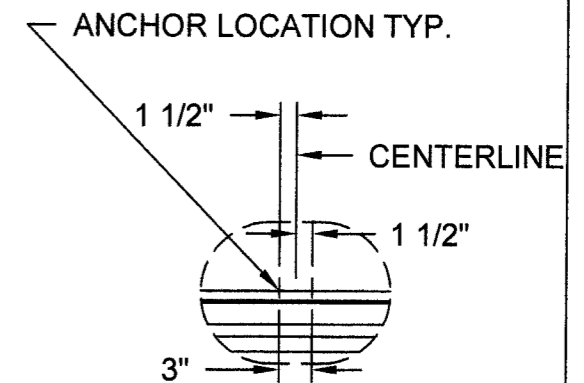
PLEASE SEE SEPARATE MIAMI-DADE COUNTY NOA FOR CASEMENT FIXED WINDOW



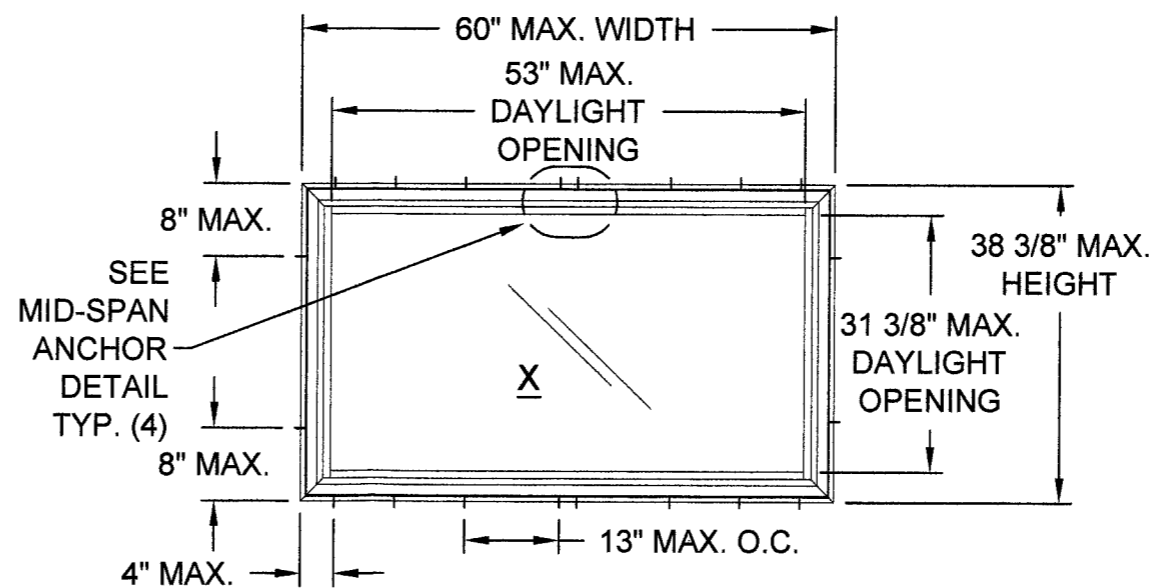
ELEVATION "A" - "OX"
(SEE SHEETS 6, 7 & 8 FOR PRESSURES)



MEETING RAIL DETAIL (SEE SHT.1 NOTE 4)



MID-SPAN ANCHOR DETAIL
(SEE SHT. 1 NOTE 4)



ELEVATION "B" - "X"
(SEE SHEET 4 FOR PRESSURES)

PRODUCT REVISED
as complying with the Florida
Building Code
Acceptance No. 08-0709.15
Expiration Date Nov. 20, 2013
By Manuel Perez
Miami Dade Product Control
Division

LZ
9/12/08

Revised By: F.K.	Date: 10/18/05	Revisions: A	NO CHANGE THIS SHEET
Revised By: D.G.	Date: 09/02/08	Revisions: B	REMOVED OR DASHED "O" CONFIGURATIONS
Revised By:	Date:	Revisions:	
Drawn By: F.K.	Date: 02/19/03	Checked By:	Date:

1070 TECHNOLOGY DRIVE
NOKOMIS, FL 34275
P.O. BOX 1529
NOKOMIS, FL 34274



Description: ELEVATIONS			
Title: ALUM. PROJECTED WINDOW, NON-IMPACT			
Series/Model: CA-640	Scale: NTS	Sheet: 3 of 11	Drawing No. 7052-8
Rev: B			

Lucas A. Turner, P.E.
PE #58201
Mechanical

COMPARATIVE ANALYSIS TABLE 1.		"X" WINDOWS TEST REPORTS: FTL-3726, FTL-3725, FTL-3730																				
GLAZING OPTIONS A. 3/16" ANNEALED, FTL-3726		B. 3/16" TEMPERED, FTL-3725						C. 1/2" I.G. (1/8" ANNEALED, 1/4" SPACE, 1/8" ANNEALED), FTL-3730														
VENT HEIGHT		17.000		18.000		21.000		24.000		26.000		30.000		33.000		36.000		37.000		38.375		
WINDOW WIDTH	24.000	A	90.0	-120.0	90.0	-120.0	90.0	-120.0	90.0	-120.0	90.0	-109.6	85.2	-85.2	73.0	-73.0	63.9	-63.9	61.4	-61.4	58.2	-58.2
		B	90.0	-210.0	90.0	-210.0	90.0	-210.0	90.0	-210.0	90.0	-197.2	90.0	-153.4	90.0	-131.5	89.5	-115.1	85.9	-110.4	81.4	-104.7
		C	90.0	-135.0	90.0	-135.0	90.0	-135.0	90.0	-127.8	90.0	-109.6	85.2	-85.2	73.0	-73.0	63.9	-63.9	61.4	-61.4	58.2	-58.2
	26.500	A	90.0	-120.0	90.0	-120.0	90.0	-120.0	90.0	-120.0	90.0	-108.9	82.9	-82.9	70.3	-70.3	61.1	-61.1	58.5	-58.5	55.3	-55.3
		B	90.0	-210.0	90.0	-210.0	90.0	-210.0	90.0	-210.0	90.0	-196.1	90.0	-149.3	90.0	-126.6	85.5	-109.9	81.9	-105.3	77.4	-99.5
		C	90.0	-135.0	90.0	-135.0	90.0	-135.0	90.0	-127.8	90.0	-108.9	82.9	-82.9	70.3	-70.3	61.1	-61.1	58.5	-58.5	55.3	-55.3
	30.000	A	90.0	-120.0	90.0	-120.0	90.0	-120.0	90.0	-120.0	90.0	-108.9	81.8	-81.8	68.2	-68.2	58.4	-58.4	55.8	-55.8	52.5	-52.5
		B	90.0	-210.0	90.0	-210.0	90.0	-210.0	90.0	-210.0	90.0	-196.1	90.0	-147.3	90.0	-122.7	81.8	-105.2	78.1	-100.4	73.5	-94.5
		C	90.0	-135.0	90.0	-135.0	90.0	-135.0	90.0	-127.8	90.0	-108.9	81.8	-81.8	68.2	-68.2	58.4	-58.4	55.8	-55.8	52.5	-52.5
	36.000	A	90.0	-120.0	90.0	-120.0	90.0	-120.0	90.0	-120.0	90.0	-108.9	81.8	-81.8	67.6	-67.6	56.8	-56.8	53.8	-53.8	50.2	-50.2
		B	90.0	-210.0	90.0	-210.0	90.0	-210.0	90.0	-210.0	90.0	-196.1	90.0	-147.3	90.0	-121.7	79.5	-102.3	75.4	-96.9	70.3	-90.3
		C	90.0	-135.0	90.0	-135.0	90.0	-121.9	90.0	-109.1	90.0	-103.8	81.8	-81.8	67.6	-67.6	56.8	-56.8	53.8	-53.8	50.2	-50.2
	37.000	A	90.0	-120.0	90.0	-120.0	90.0	-120.0	90.0	-119.7	90.0	-105.6	81.8	-81.8	67.6	-67.6	56.8	-56.8	53.8	-53.8	50.1	-50.1
		B	90.0	-210.0	90.0	-210.0	90.0	-210.0	90.0	-210.0	90.0	-196.1	90.0	-147.3	90.0	-121.7	79.5	-102.3	75.3	-96.8	70.1	-90.1
		C	90.0	-135.0	90.0	-135.0	90.0	-118.3	90.0	-104.8	90.0	-100.3	81.8	-81.8	67.6	-67.6	56.8	-56.8	53.8	-53.8	50.1	-50.1
	43.000	A	90.0	-120.0	90.0	-120.0	90.0	-114.7	90.0	-100.0	89.3	-89.3	74.3	-74.3	67.4	-67.4	56.8	-56.8	53.8	-53.8	50.0	-50.0
		B	90.0	-210.0	90.0	-210.0	90.0	-206.5	90.0	-189.5	90.0	-180.7	90.0	-147.3	90.0	-121.7	79.5	-102.3	75.3	-96.8	70.0	-90.0
		C	90.0	-133.5	90.0	-128.0	90.0	-100.9	85.4	-85.4	83.0	-83.0	78.6	-78.6	67.6	-67.6	56.8	-56.8	53.8	-53.8	50.0	-50.0
	48.000	A	90.0	-116.6	90.0	-111.6	90.0	-99.4	90.0	-90.6	82.0	-82.0	65.1	-65.1	59.4	-59.4	55.6	-55.6	53.8	-53.8	50.0	-50.0
		B	90.0	-209.9	90.0	-200.8	90.0	-179.0	90.0	-163.1	90.0	-154.9	90.0	-142.4	90.0	-121.7	79.5	-102.3	75.3	-96.8	70.0	-90.0
		C	90.0	-116.6	90.0	-111.6	90.0	-93.1	75.9	-75.9	71.8	-71.8	67.9	-67.9	65.0	-65.0	56.8	-56.8	53.8	-53.8	50.0	-50.0
	53.125	A	90.0	-103.2	90.0	-98.6	87.5	-87.5	79.3	-79.3	73.3	-73.3	56.9	-56.9	52.7	-52.7	49.2	-49.2	48.4	-48.4	47.3	-47.3
		B	90.0	-185.8	90.0	-177.5	90.0	-157.5	90.0	-142.8	90.0	-135.1	90.0	-123.2	90.0	-116.6	79.5	-102.3	75.3	-96.8	70.0	-90.0
		C	90.0	-103.2	90.0	-98.6	87.5	-87.5	68.3	-68.3	63.1	-63.1	58.7	-58.7	57.2	-57.2	56.4	-56.4	53.8	-53.8	50.0	-50.0
57.000	A	90.0	-95.0	90.0	-90.6	80.2	-80.2	72.5	-72.5	68.5	-68.5	53.3	-53.3	48.1	-48.1	45.3	-45.3	44.4	-44.4	43.4	-43.4	
	B	90.0	-171.0	90.0	-163.1	90.0	-144.3	90.0	-130.5	90.0	-123.2	87.0	-111.9	82.0	-105.5	78.1	-100.4	75.3	-96.8	70.0	-90.0	
	C	90.0	-95.0	90.0	-90.6	80.2	-80.2	64.6	-64.6	56.6	-56.6	52.5	-52.5	51.9	-51.9	51.4	-51.4	50.9	-50.9	50.0	-50.0	
60.000	A	89.4	-89.4	85.3	-85.3	75.3	-75.3	68.0	-68.0	64.1	-64.1	51.1	-51.1	45.0	-45.0	42.1	-42.1	41.6	-41.6	40.9	-40.9	
	B	90.0	-161.0	90.0	-153.5	90.0	-135.6	90.0	-122.4	89.7	-115.3	81.2	-104.4	76.4	-98.2	72.5	-93.2	71.4	-91.8	70.0	-90.0	
	C	89.4	-89.4	85.3	-85.3	75.3	-75.3	61.1	-61.1	53.2	-53.2	48.3	-48.3	48.9	-48.9	48.5	-48.5	48.1	-48.1	47.5	-47.5	



- NOTES:
- FOR INSTALLATIONS IN CONCRETE OR WOOD TO THE FULL DESIGN PRESSURES IN THESE TABLES, USE ELCO 1/4" TAPCONS OR 1/4" SS4 CRETE-FLEX ANCHORS.
 - IF INSTALLING WITH #12 SCREWS, DESIGN PRESSURE IS LIMITED TO 79.9 P.S.F.

COMPARATIVE ANALYSIS TABLE 2.		"X" WINDOWS TEST REPORT: FTL-3731																				
GLAZING OPTIONS: D. 1/8" ANNEALED (DSB) GLASS																						
VENT HEIGHT		17.000		18.000		21.000		24.000		26.000		30.000		33.000		36.000		37.000		38.375		
WINDOW WIDTH	24.000	A	75.0	-75.0	75.0	-75.0	75.0	-75.0	75.0	-75.0	75.0	-75.0	68.2	-68.2	58.4	-58.4	51.1	-51.1	49.1	-49.1	46.5	-46.5
	26.500	A	75.0	-75.0	75.0	-75.0	75.0	-75.0	75.0	-75.0	75.0	-75.0	66.4	-66.4	56.3	-56.3	48.9	-48.9	46.8	-46.8	44.2	-44.2
	30.000	A	75.0	-75.0	75.0	-75.0	75.0	-75.0	75.0	-75.0	71.4	-71.4	65.3	-65.3	54.5	-54.5	46.8	-46.8	44.6	-44.6	42.0	-42.0
	36.000	A	75.0	-75.0	75.0	-75.0	67.7	-67.7	60.6	-60.6	57.7	-57.7	53.4	-53.4	50.3	-50.3	45.5	-45.5	43.1	-43.1	40.2	-40.2
	37.000	A	75.0	-75.0	75.0	-75.0	65.7	-65.7	58.2	-58.2	55.7	-55.7	51.9	-51.9	48.9	-48.9	45.5	-45.5	43.0	-43.0	40.1	-40.1
	43.000	A	75.0	-75.0	75.0	-75.0	56.1	-56.1	47.4	-47.4	46.1	-46.1	43.6	-43.6	41.1	-41.1	38.5	-38.5	38.2	-38.2	37.6	-37.6
	48.000	A	75.0	-75.0	74.2	-74.2	51.7	-51.7	42.2	-42.2	39.9	-39.9	37.7	-37.7	36.1	-36.1	35.2	-35.2	34.6	-34.6	33.7	-33.7
	53.125	A	68.7	-68.7	65.6	-65.6	49.1	-49.1	37.9	-37.9	35.0	-35.0	32.6	-32.6	31.8	-31.8	31.3	-31.3	31.0	-31.0	30.0	-30.0

PRODUCT REVISED
 to comply with the Florida
 Building Code
 Acceptance No. 08-0709-15
 Expiration Date Nov. 20, 2013
 By: *Manuel Perez*
 Miami Code Product Control
 Division

L J
 9/2/08

Revised By: F.K.	Date: 10/18/05	Revisions: A	REVISE ANCHORAGE
Revised By: D.G.	Date: 09/02/08	Revisions: B	NO CHANGE THIS SHEET
Revised By:	Date:	Revisions:	
Drawn By: F.K.	Date: 02/19/03	Checked By:	Date:

1070 TECHNOLOGY DRIVE
 NOKOMIS, FL 34275
 P.O. BOX 1529
 NOKOMIS, FL 34274



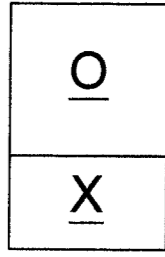
Description: DESIGN PRESSURES "X" WINDOWS			
Title: ALUM. PROJECTED WINDOW, NON-IMPACT			
Series/Model: CA-640	Scale: NTS	Sheet: 4 of 11	Drawing No. 7052-8
Rev: B			

Lucas A. Turner, P.E.
 PE #58201
 Mechanical

COMPARATIVE ANALYSIS TABLE 4. "OX" UNEQUAL LITE WINDOWS TEST REPORTS: FTL-3726, FTL-3725, FTL-3730

GLAZING OPTIONS: A. 3/16" ANNEALED, FTL-3726 B. 3/16" TEMPERED, FTL-3725 C. 1/2" I.G. (1/8" ANNEALED, 1/4" SPACE, 1/8" ANNEALED), FTL-3730

WINDOW WIDTH	VENT HEIGHT																								
	17.000												18.000												
	26.000		32.000		38.375		44.000		50.625		59.000		26.000		32.000		38.375		44.000		50.625		59.000		
"OX" HEIGHT	43.000		49.000		55.375		61.000		67.625		76.000		44.000		50.000		56.375		62.000		68.625		77.000		
24.000	A	90.0	-120.0	90.0	-120.0	90.0	-115.0	90.0	-97.8	88.1	-88.1	77.1	-77.1	90.0	-120.0	90.0	-120.0	90.0	-115.0	90.0	-97.8	88.1	-88.1	77.1	-77.1
	B	90.0	-210.0	90.0	-210.0	90.0	-210.0	90.0	-204.0	90.0	-169.0	90.0	-138.9	90.0	-210.0	90.0	-210.0	90.0	-210.0	90.0	-204.0	90.0	-169.0	90.0	-138.9
	C	90.0	-135.0	90.0	-126.5	90.0	-100.0	83.7	-83.7	70.7	-70.7	62.3	-62.3	90.0	-135.0	90.0	-126.5	90.0	-100.0	83.7	-83.7	70.7	-70.7	62.3	-62.3
26.500	A	90.0	-120.0	90.0	-120.0	90.0	-97.8	86.0	-86.0	74.1	-74.1	64.3	-64.3	90.0	-120.0	90.0	-120.0	90.0	-97.8	86.0	-86.0	74.1	-74.1	64.3	-64.3
	B	90.0	-210.0	90.0	-210.0	90.0	-210.0	90.0	-192.2	90.0	-158.2	90.0	-129.2	90.0	-210.0	90.0	-210.0	90.0	-210.0	90.0	-192.2	90.0	-158.2	90.0	-129.2
	C	90.0	-135.0	90.0	-118.4	90.0	-94.4	79.8	-79.8	66.6	-66.6	52.8	-52.8	90.0	-135.0	90.0	-118.4	90.0	-94.4	79.8	-79.8	66.6	-66.6	52.8	-52.8
30.000	A	90.0	-120.0	90.0	-104.6	84.3	-84.3	72.4	-72.4	60.9	-60.9	51.8	-51.8	90.0	-120.0	90.0	-104.6	84.3	-84.3	72.4	-72.4	60.9	-60.9	51.8	-51.8
	B	90.0	-210.0	90.0	-210.0	90.0	-210.0	90.0	-180.1	90.0	-146.6	90.0	-118.7	90.0	-210.0	90.0	-210.0	90.0	-210.0	90.0	-180.1	90.0	-146.6	90.0	-118.7
	C	90.0	-128.5	90.0	-109.6	89.7	-89.7	76.1	-76.1	63.1	-63.1	49.6	-49.6	90.0	-128.5	90.0	-109.6	89.7	-89.7	76.1	-76.1	63.1	-63.1	49.6	-49.6
36.000	A	90.0	-109.1	84.6	-84.6	70.7	-70.7	61.5	-61.5	52.1	-52.1	43.2	-43.2	90.0	-109.1	84.6	-84.6	70.7	-70.7	61.5	-61.5	52.1	-52.1	43.2	-43.2
	B	90.0	-210.0	90.0	-210.0	90.0	-210.0	90.0	-167.4	90.0	-133.4	82.5	-106.1	90.0	-210.0	90.0	-210.0	90.0	-210.0	90.0	-167.4	90.0	-133.4	82.5	-106.1
	C	90.0	-103.8	90.0	-92.3	79.3	-79.3	68.2	-68.2	60.0	-60.0	49.4	-49.4	90.0	-103.8	90.0	-92.3	79.3	-79.3	68.2	-68.2	60.0	-60.0	49.4	-49.4
37.000	A	90.0	-105.6	82.1	-82.1	69.3	-69.3	60.2	-60.2	51.0	-51.0	42.4	-42.4	90.0	-105.6	82.1	-82.1	69.3	-69.3	60.2	-60.2	51.0	-51.0	42.4	-42.4
	B	90.0	-210.0	90.0	-210.0	90.0	-210.0	90.0	-166.0	90.0	-131.8	81.3	-104.5	90.0	-210.0	90.0	-210.0	90.0	-210.0	90.0	-166.0	90.0	-131.8	81.3	-104.5
	C	90.0	-100.3	89.6	-89.6	77.8	-77.8	67.5	-67.5	58.9	-58.9	49.1	-49.1	90.0	-100.3	89.6	-89.6	77.8	-77.8	67.5	-67.5	58.9	-58.9	49.1	-49.1
43.000	A	89.3	-89.3	69.2	-69.2	60.2	-60.2	53.8	-53.8	46.7	-46.7	39.4	-39.4	89.3	-89.3	69.2	-69.2	60.2	-60.2	53.8	-53.8	46.7	-46.7	39.4	-39.4
	B	90.0	-210.0	90.0	-208.8	90.0	-201.9	90.0	-161.9	90.0	-125.1	75.6	-97.1	90.0	-210.0	90.0	-205.2	90.0	-198.5	90.0	-161.9	90.0	-125.1	75.6	-97.1
	C	83.0	-83.0	75.4	-75.4	67.6	-67.6	60.6	-60.6	52.2	-52.2	45.1	-45.1	83.0	-83.0	75.4	-75.4	67.6	-67.6	60.6	-60.6	52.2	-52.2	45.1	-45.1
48.000	A	82.0	-82.0	61.1	-61.1	52.8	-52.8	48.7	-48.7	43.8	-43.8	37.5	-37.5	82.0	-82.0	61.1	-61.1	52.8	-52.8	48.7	-48.7	43.8	-43.8	37.5	-37.5
	B	90.0	-191.5	90.0	-178.7	90.0	-170.4	90.0	-161.8	90.0	-122.6	72.5	-93.2	90.0	-187.9	90.0	-175.5	90.0	-167.6	90.0	-161.8	90.0	-122.6	72.5	-93.2
	C	71.8	-71.8	65.6	-65.6	60.6	-60.6	53.7	-53.7	47.8	-47.8	40.5	-40.5	71.8	-71.8	65.6	-65.6	60.6	-60.6	53.7	-53.7	47.8	-47.8	40.5	-40.5
53.125	A	73.3	-73.3	54.0	-54.0	47.3	-47.3	43.8	-43.8	40.5	-40.5	35.3	-35.3	73.3	-73.3	54.0	-54.0	47.3	-47.3	43.8	-43.8	40.5	-40.5	35.3	-35.3
	B	90.0	-168.1	90.0	-155.6	90.0	-147.0	90.0	-142.3	90.0	-122.2	70.7	-90.9	90.0	-164.8	90.0	-152.8	90.0	-144.5	90.0	-140.0	90.0	-122.2	70.7	-90.9
	C	63.1	-63.1	57.6	-57.6	54.1	-54.1	49.2	-49.2	43.1	-43.1	36.5	-36.5	63.1	-63.1	57.6	-57.6	54.1	-54.1	49.2	-49.2	43.1	-43.1	36.5	-36.5
57.000	A	69.0	-69.0	49.4	-49.4	43.4	-43.4	40.4	-40.4	37.6	-37.6	33.6	-33.6	69.0	-69.0	49.4	-49.4	43.4	-43.4	40.4	-40.4	37.6	-37.6	33.6	-33.6
	B	90.0	-153.9	90.0	-141.8	90.0	-133.1	90.0	-128.1	90.0	-122.2	70.1	-90.1	90.0	-150.9	90.0	-139.2	90.0	-130.8	90.0	-126.0	90.0	-122.2	70.1	-90.1
	C	56.6	-56.6	51.1	-51.1	50.4	-50.4	45.8	-45.8	39.9	-39.9	34.0	-34.0	56.6	-56.6	51.1	-51.1	50.4	-50.4	45.8	-45.8	39.9	-39.9	34.0	-34.0
60.000	A	66.2	-66.2	46.7	-46.7	40.9	-40.9	38.6	-38.6	35.8	-35.8	32.3	-32.3	66.2	-66.2	46.7	-46.7	40.9	-40.9	38.6	-38.6	35.8	-35.8	32.3	-32.3
	B	90.0	-144.4	90.0	-132.7	90.0	-124.1	90.0	-118.9	89.5	-115.1	70.0	-90.0	90.0	-141.5	90.0	-130.2	90.0	-121.9	90.0	-117.0	88.1	-113.3	70.0	-90.0
	C	53.2	-53.2	48.6	-48.6	47.5	-47.5	43.3	-43.3	37.8	-37.8	32.3	-32.3	53.2	-53.2	48.6	-48.6	47.5	-47.5	43.3	-43.3	37.8	-37.8	32.3	-32.3



NOTES:

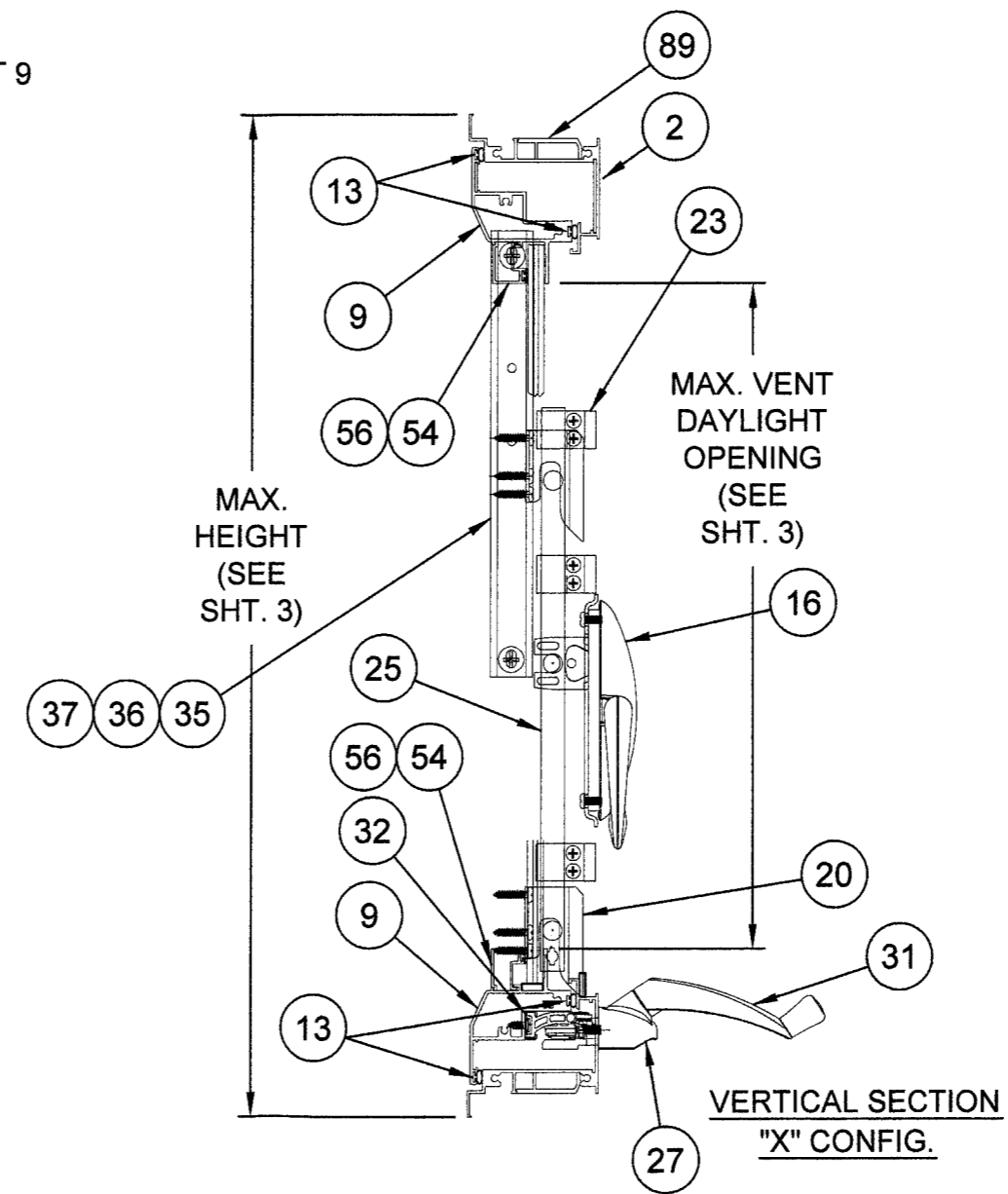
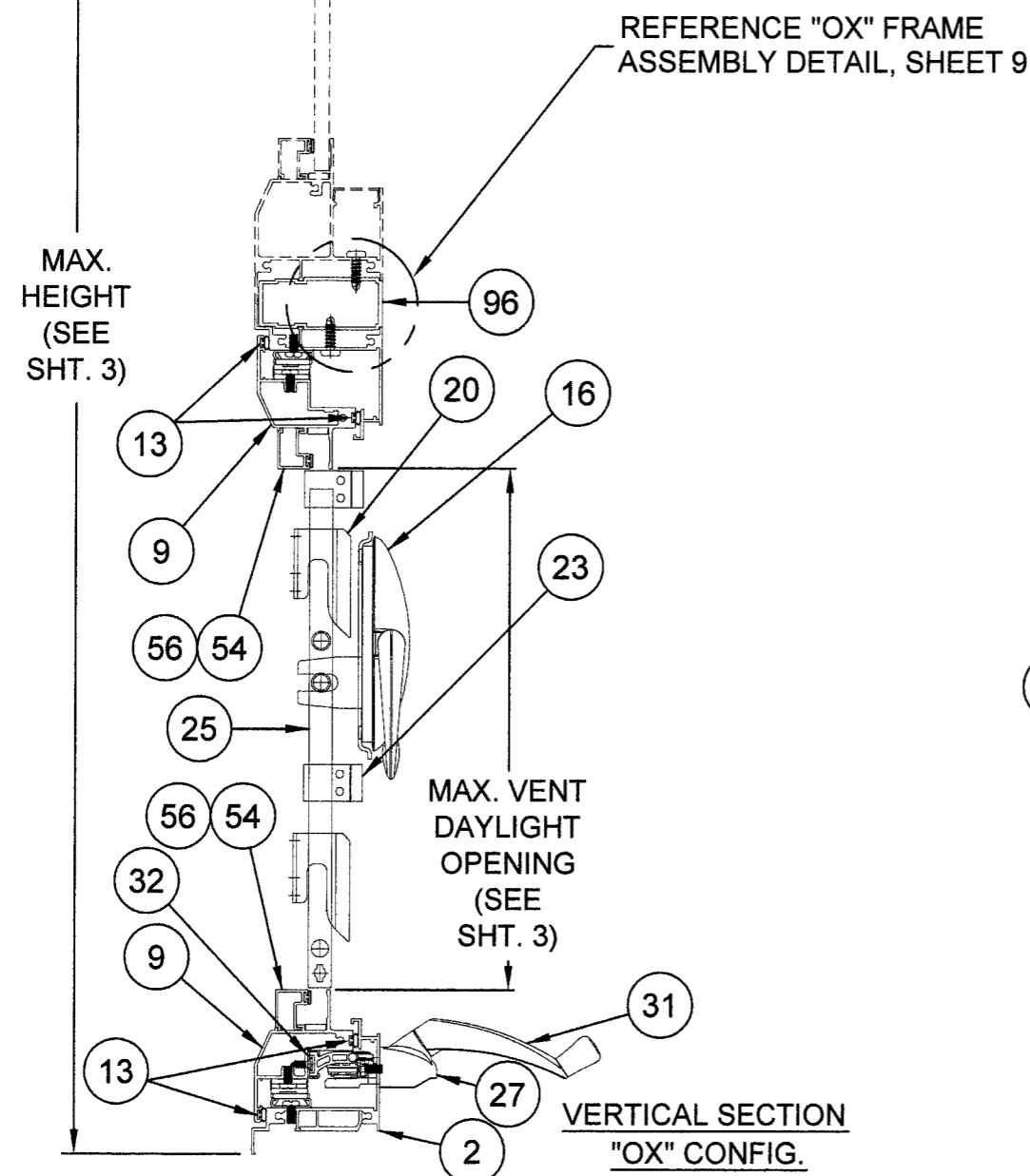
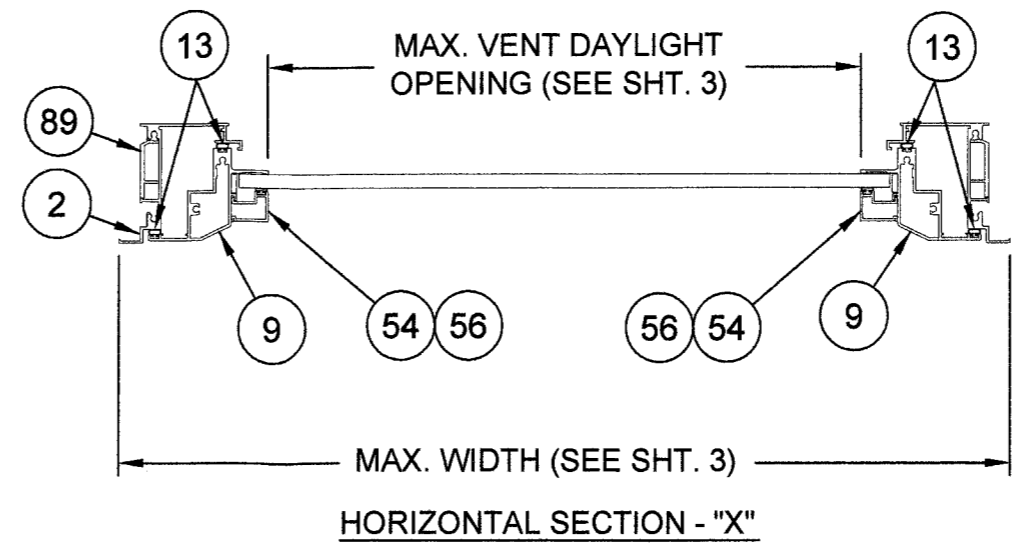
- FOR INSTALLATIONS IN WOOD OR CONCRETE TO THE FULL DESIGN PRESSURES IN THE ABOVE TABLE, USE ELCO 1/4" TAPCONS OR 1/4" SS4 CRETE-FLEX ANCHORS.
- IF INSTALLING WITH #12 SCREWS, DESIGN PRESSURE IS LIMITED TO 79.9 P.S.F.

PRODUCT REVISED
 as complying with the Florida
 Building Code
 Acceptance No. **DB-0709.15**
 Expiration Date **Nov. 20, 2013**
 By: *Manuel Perez*
 Michael Dade Product Control
 Division

LZ
 9/12/08

Revised By: F.K.	Date: 10/18/05	Revisions: A	REVISE ANCHORAGE	1070 TECHNOLOGY DRIVE NOKOMIS, FL 34275 P.O. BOX 1529 NOKOMIS, FL 34274	PGT Visibly Better	Description: DESIGN PRESSURES "OX" WINDOWS					
Revised By: D.G.	Date: 09/02/08	Revisions: B	SHEET RENUMBERED			Title: ALUM. PROJECTED WINDOW, NON-IMPACT					
Revised By:	Date:	Revisions:				Series/Model: CA-640	Scale: NTS	Sheet: 5 of 11	Drawing No: 7052-8	Rev: B	
Drawn By: F.K.	Date: 02/19/03	Checked By:	Date:	Lucas A. Turner, P.E. PE #58201 Mechanical							

PLEASE SEE SEPARATE
MIAMI-DADE COUNTY NOA
FOR CASEMENT FIXED
WINDOW



PRODUCT REVISED
as complying with the Florida
Building Code
Acceptance No. 08-0709.15
Expiration Date NOV. 20, 2013
By Manuel Perez
Miami Dade Product Control
Division

L J
9/12/08

Revsd By: F.K.	Date: 10/18/05	Revisions: A	ADD ITEM 89
Revsd By: D.G.	Date: 09/02/08	Revisions: B	REMOVED "O" CONFIGURATION OR DASHED
Revsd By:	Date:	Revisions:	
Drawn By: F.K.	Date: 02/19/03	Checked By:	Date:

1070 TECHNOLOGY DRIVE
NOKOMIS, FL 34275

P.O. BOX 1529
NOKOMIS, FL 34274

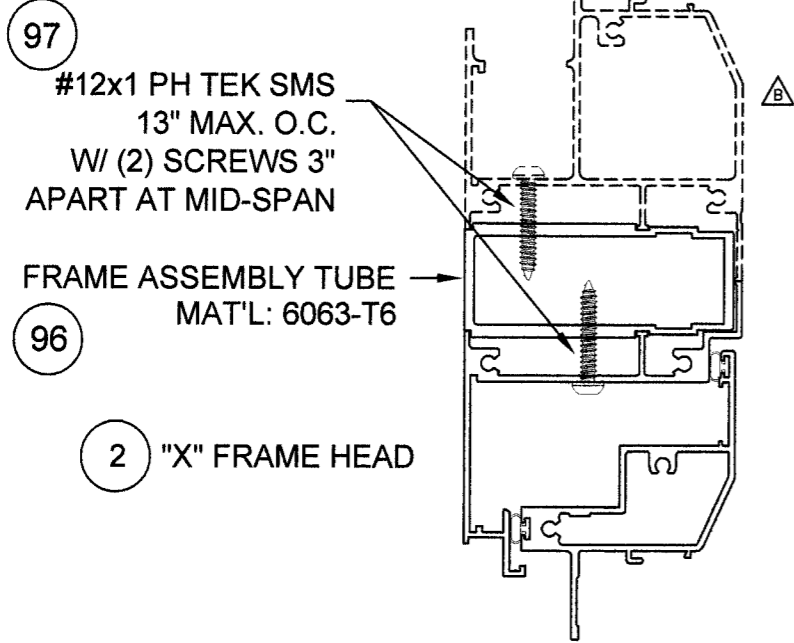


Description: SECTIONS			
Title: ALUM. PROJECTED WINDOW, NON-IMPACT			
Series/Model: CA-640	Scale: NTS	Sheet: 8 of 11	Drawing No. 7052-8
			Rev: B

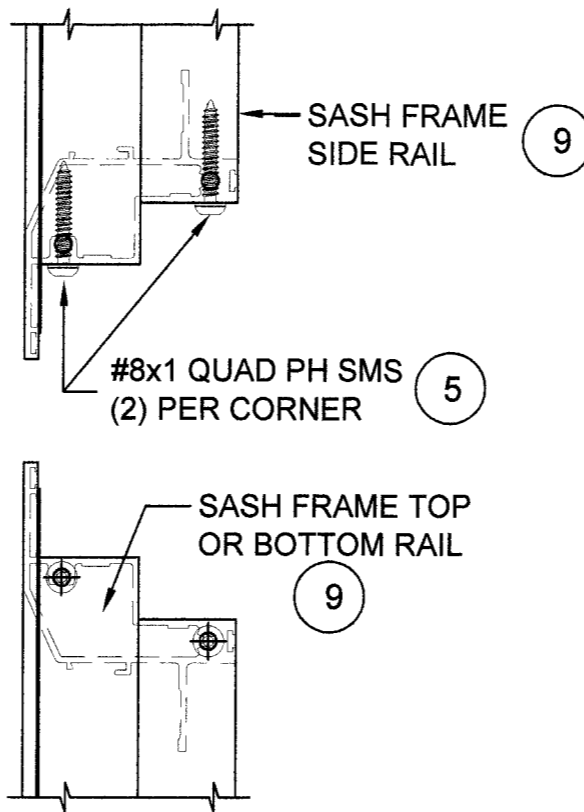
Lucas A. Turner, P.E.
PE #58201
Mechanical

PLEASE SEE SEPARATE MIAMI-DADE COUNTY NOA FOR CASEMENT FIXED WINDOW

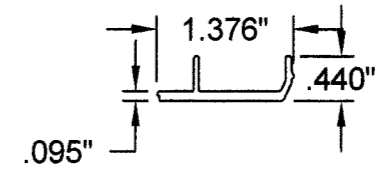
NOTE: ALL ALUMINUM SHALL BE OF 6063-T6



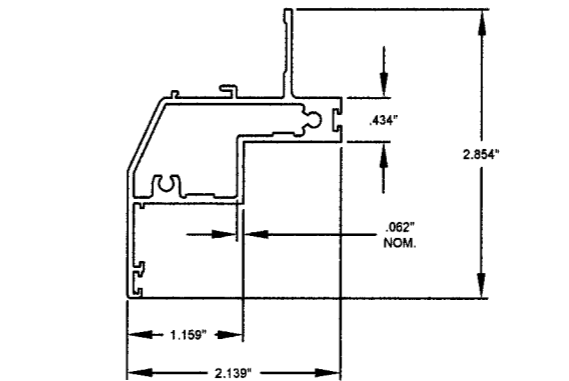
"OX" FRAME ASSEMBLY DETAIL



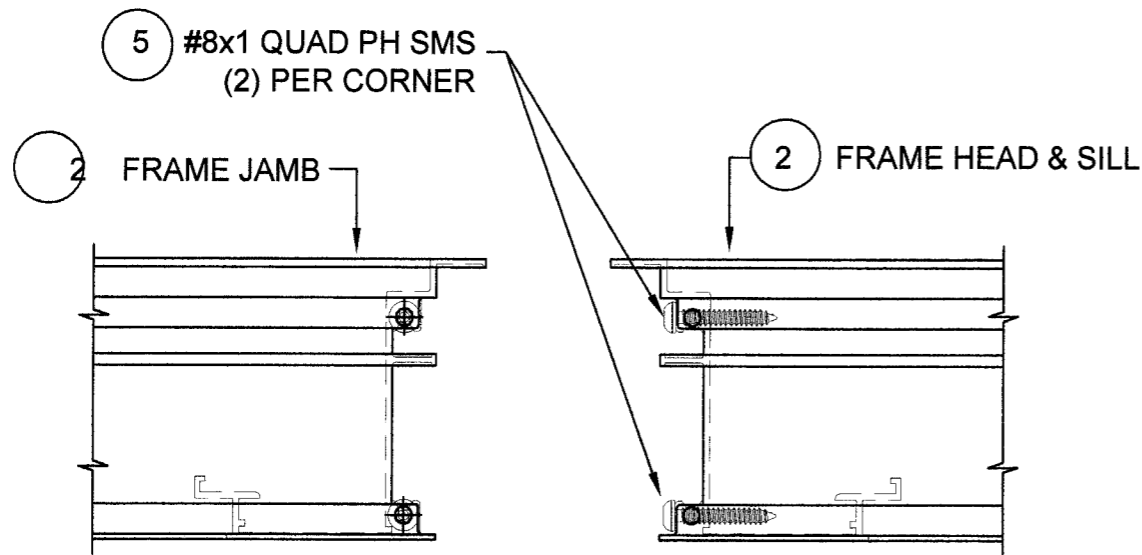
SASH FRAME ASSEMBLY DETAIL



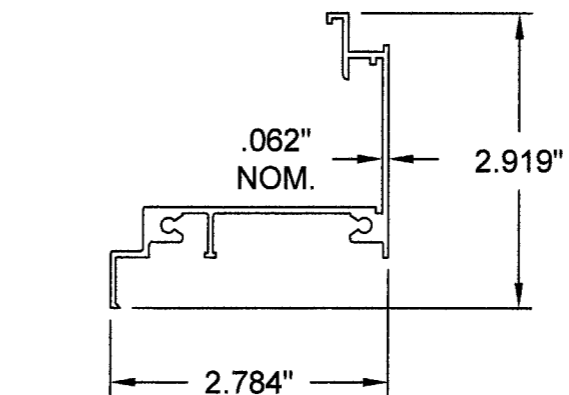
89 CASEMENT BACKING PLATE
MAT'L: 6063-T6
DWG# 7071



9 SASH FRAME HEAD, SILL, JAMB
MAT'L: 6063-T6
DWG# 7003A



MAIN FRAME ASSEMBLY DETAIL



2 FRAME HEAD, SILL, JAMB
MAT'L: 6063-T6
DWG# 7002A

PRODUCT REVISED
to comply with the Florida
Building Code
Acceptance No. *DB-0709.15*
Expiration Date *Nov. 20, 2013*
By *Manuel Perez*
Miami Dade Product Control
Division

ZZ
9/12/08

Revsd By: F.K.	Date: 10/18/05	Revisions: A	ADD ITEM 89
Revsd By: D.G.	Date: 09/02/08	Revisions: B	REMOVED OR DASHED "O" CONFIGURATION
Revsd By:	Date:	Revisions:	
Drawn By: F.K.	Date: 02/19/03	Checked By:	Date:

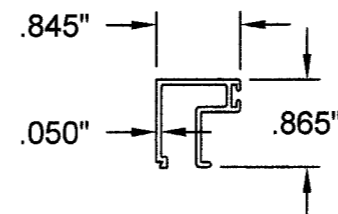
1070 TECHNOLOGY DRIVE
NOKOMIS, FL 34275
P.O. BOX 1529
NOKOMIS, FL 34274



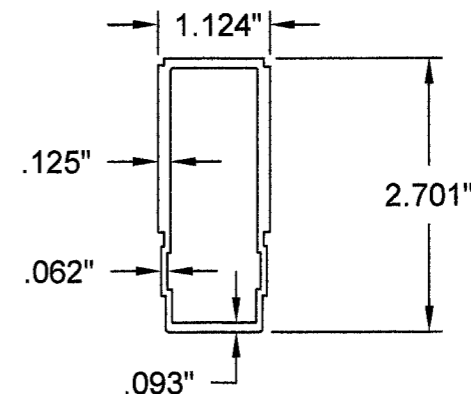
Description: EXTRUSIONS & ASSEMBLY DETAILS			
Title: ALUM. PROJECTED WINDOW, NON-IMPACT			
Series/Model: CA-640	Scale: NTS	Sheet: 9 of 11	Drawing No. 7052-8
			Rev: B

Lucas A. Turner, P.E.
PE #58201
Mechanical

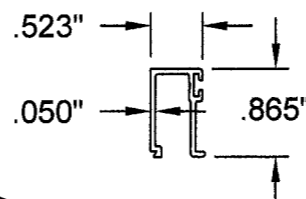
	ITEM	DWG #	PGT. #	DESCRIPTION	
FRAME "X"	2	7002	67002A	MAIN FRAME HEAD, SILL AND JAMB	
	5	1155	781PQA	#8 X 1 QUAD PN SMS	
	6	7008	7MC7008	FRAME CORNER KEY	
SASH	7	7048	77048K	1/2" X 1/2" X 1/8" CLOSED-CELL FOAM TAPE	
	9	7003	67003A	SASH TOP, BOTTOM AND HINGED	
	5	1155	781PQA	#8 X 1 QUAD PN SMS	
HARDWARE	13	7017	67017K	BULB WEATHERSTRIP .187X.185	
	14	7009	7MC7009	SASH CORNER KEY	
	16	7024	7MC7024	TRUTH #24.30.XX.002, MAXIM MULTI- 2 POINT LOCK	
	17	7026	7MC7026	TRUTH #23050.92, LOCK SUPPORT PLATE	
	18		7MC1024PPF	TRUTH #19298, #10-24 X .562 PH. PN. TYPE F	
	20	7014	7MC7014 RH/LH	TRUTH #40928 & #40929, MULTI-LOCK KEEPER (R.H. & L.H.)	
	21	1157	78X12PPSMS	#8 X .500 PH. PN. SMS	
	23	7013	7MC7013	TRUTH #31841, TIE BAR GUIDE	
	24		78X1FPSMS	#8 X 1.00 FH. PH. SMS	
	25	7015	SEE CHART	TRUTH #11901.92 (14.9), TIE BAR ASSEMBLY	
	27	7029	7MC7029	TRUTH #51.02.32.011, MAXIM PROJECTED OPERATOR	
	28	7030	7MC7030	TRUTH #31882, OPERATOR GASKET	
	29	7031	7MC7031	TRUTH #21641, BACKING PLATE	
	30		7832X38PPMSA	#8-32 X .375 PH. PN. TYPE B	
	31		7MC7022	TRUTH #11454, SNAP-ON HANDLE	
	32	7034		TRUTH #11577, OPERATOR TRACK & SLIDER	
	33		78X78PPSMS	#8 X .750 PH. PN. SMS	
	35	7023	7MC7023	TRUTH #34.25.00.212, PROJECTED HINGE - 12"	
	36	7023-2	7MC702316	TRUTH #34.27.00.104, PROJECTED HINGE - 16"	
	37	7023-3	7MC702320	TRUTH #34.29.00.107, PROJECTED HINGE - 20"	
	38		710X12PPSMS	#10 X .500 PH. PHL.	
	GLAZING	40			SILICONE - DOW CORNING 899, 995 OR EQUIVALENT
		41			3/16" ANNEALED GLASS
		42			3/16" TEMPERED GLASS
		43			1/2" I.G. GLASS (1/8" A, 1/4" SPACE, 1/8" A)
		44			1/8" ANNEALED (DSB) GLASS
		49			GLASS HEIGHT.
		50	1634	71634K	SETTING BLOCK 5/32" X 7/16" X 1" LG.
		54	7037	67037	GLAZING BEAD (DSB, 3/16) .187WT/FT.
		56	7042	67042	GLAZING BEAD (1/2" I.G., 7/16 LAM.).149
		58	7038	67038	GL BEAD DSB W/GR KIT
	BEAD	59	7039	67039	GL BEAD 3/16" W/GR KIT
		64	1224	6TP247	VINYL BULB WSTP (THICK)
		66	7006	67006	SCREEN FRAME
		68	7040	47040 W/B	SCREEN CORNER KEY
	SCREEN	69			SCREEN CLOTH
		70	1635	61635K	SCREEN SPLINE - SERRATED
		71	331-A	60976	CASEMENT SCREEN CLIP
72		1157	78X12PSTW/B	#8 X .500 SQ. PN. TEK SMS	
OPTIONS	74	135	66389	ADD-ON FIN	
	76	134	66615	ADD-ON FLANGE	
	77		7MC30426	TRUTH #30476, CLERESTORY POLE	
	78		7MC20550	TRUTH #20550, CLERESTORY ADAPTER	
	79	7019	711573	TRUTH #11573, SNAP-ON T-HANDLE KNOB	
	80	7018	7FLDHD	TRUTH #11329, FOLDING HANDLE	
	89	7071	67071	CASEMENT BACKING PLATE (SEE NOTE 4, SHEET 11)	



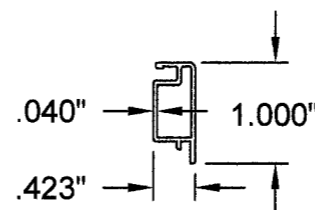
54 1/8" OR 3/16" GLAZING BEAD
MAT'L: 6063-T6
DWG# 7037



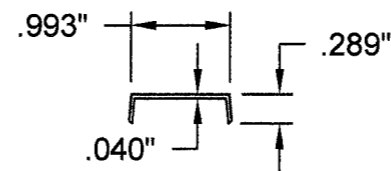
96 CASEMENT FRAME
ASSEMBLY TUBE
MAT'L: 6063-T6
DWG# 7004A



56 1/2" I.G. GLAZING BEAD
MAT'L: 6063-T6
DWG# 7042



66 CASEMENT SCREEN FRAME
MAT'L: 6063-T6
DWG# 7006



94 INSTALLATION HOLE COVER
MAT'L: 6063-T6
DWG# 7007

PRODUCT REVISED
as complying with the Florida
Building Code
Acceptance No. 08-0709.15
Expiration Date NOV. 20, 2013
By *Manuel Perez*
Miami Code Product Control
Division

LZ
9/12/08

Revised By: F.K.	Date: 10/18/05	Revisions: A	ADD EQUIV. TO ITEM 40, SILICONE AND ADD ITEM 89
Revised By: D.G.	Date: 09/02/08	Revisions: B	REMOVED FIXED ("O") PARTS FROM B.O.M.
Revised By:	Date:	Revisions:	
Drawn By: F.K.	Date: 02/19/03	Checked By:	Date:

1070 TECHNOLOGY DRIVE
NOKOMIS, FL 34275
P.O. BOX 1529
NOKOMIS, FL 34274

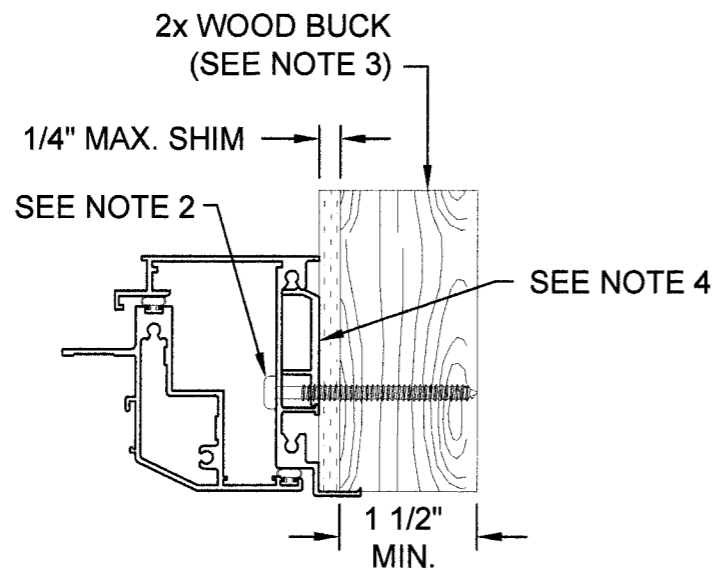


Description:
PARTS LIST & EXTRUSIONS

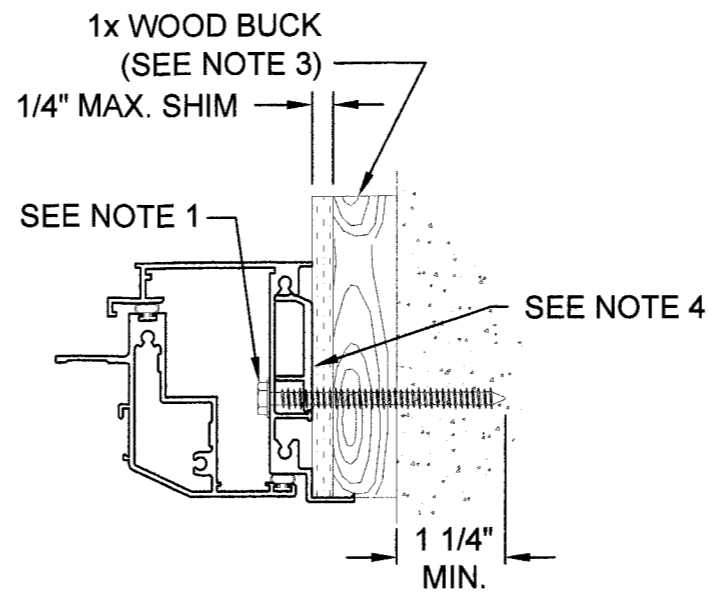
Title:
ALUM. PROJECTED WINDOW, NON-IMPACT

Series/Model: CA-640	Scale: NTS	Sheet: 10 of 11	Drawing No. 7052-8	Rev: B
-------------------------	---------------	--------------------	-----------------------	-----------

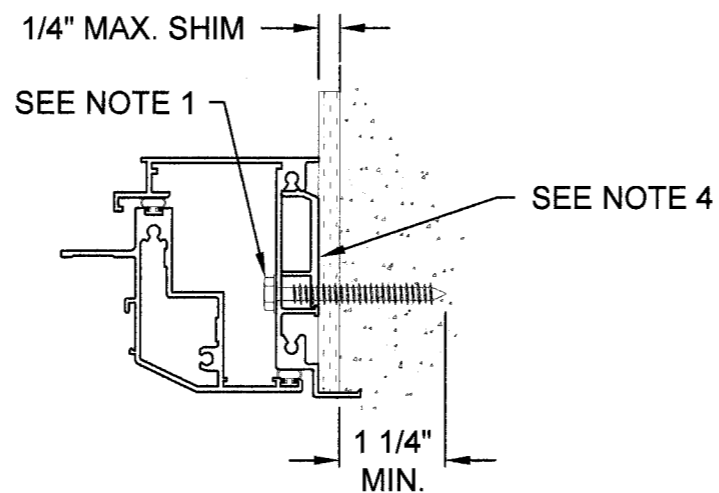
Lucas A. Turner, P.E.
PE #58201
Mechanical



OPERABLE UNIT FRAME
TO WOOD BUCK
1 1/2" OR MORE THICK



OPERABLE UNIT FRAME
TO CONCRETE W/ WOOD BUCK
LESS THAN 1 1/2" THICK



OPERABLE UNIT FRAME
TO CONCRETE


NOTE: ALL DETAILS
APPLY TO HEAD,
SILL, AND JAMB.

NOTES:

1. FOR CONCRETE APPLICATIONS IN MIAMI-DADE COUNTY, USE ONLY MIAMI-DADE COUNTY APPROVED 1/4" ELCO TAPCONS OR 1/4" SS4 CRETE-FLEX CONCRETE ANCHORS. MINIMUM DISTANCE FROM ANCHOR TO CONCRETE EDGE IS 2 1/2". SEE SHEET 1 FOR SPACING.
2. FOR WOOD APPLICATIONS IN MIAMI-DADE COUNTY, USE #12 SCREWS, 1/4" ELCO TAPCONS OR 1/4" ELCO SS4 CRETE-FLEX. SEE SHEET 1 FOR SPACING.
3. WOOD BUCKS DEPICTED IN THE SECTIONS ON THIS PAGE AS 1x ARE BUCKS WHOSE TOTAL THICKNESS IS LESS THAN 1 1/2". 1x WOOD BUCKS ARE OPTIONAL IF UNIT IS INSTALLED DIRECTLY TO SOLID CONCRETE. WOOD BUCKS DEPICTED AS 2x ARE 1 1/2" THICK OR GREATER. INSTALLATION TO THE SUBSTRATE OF WOOD BUCKS TO BE ENGINEERED BY OTHERS OR AS APPROVED BY AUTHORITY HAVING JURISDICTION.
4. ITEM 89, BACKING PLATE, NOT REQUIRED FOR INSTALLATIONS OUTSIDE OF MIAMI-DADE COUNTY.

PRODUCT REVISED
to comply with the Florida
Building Code
Acceptance No. DB-0709.15
Expiration Date NOV. 20, 2013
By Manuel Perez
Miami Code Product Control
Division

L J
9/2/08

Revised By: F.K.	Date: 10/18/05	Revisions: A	REVISE ANCHORAGE AND NOTES	1070 TECHNOLOGY DRIVE NOKOMIS, FL 34275 P.O. BOX 1529 NOKOMIS, FL 34274	 Visibly Better	Description: ANCHORAGE DETAILS				
Revised By: D.G.	Date: 09/02/08	Revisions: B	REMOVED "O" ANCHORAGE DETAILS			Title: ALUM. PROJECTED WINDOW, NON-IMPACT				
Revised By:	Date:	Revisions:				Series/Model: CA-640	Scale: NTS	Sheet: 11 of 11	Drawing No. 7052-8	Rev: B
Drawn By: F.K.	Date: 02/19/03	Checked By:	Date:							

Lucas A. Turner, P.E.
PE #58201
Mechanical