

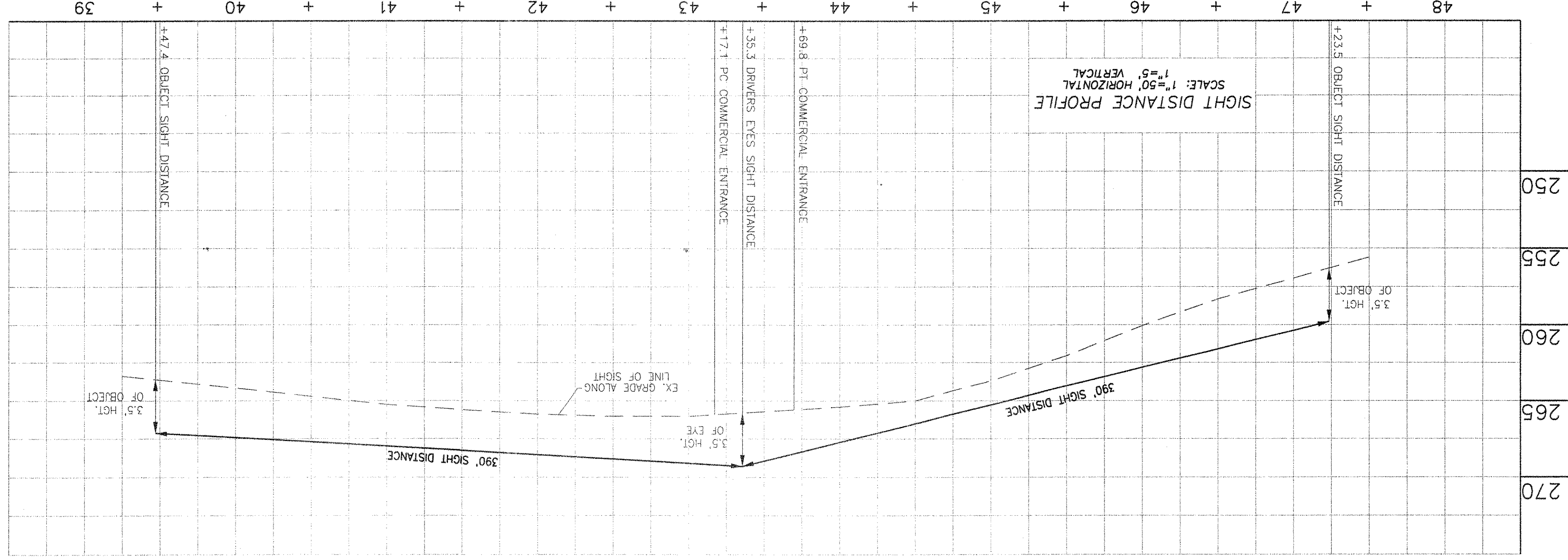
NOTES:

1. THE PROPOSED FRONTAGE IMPROVEMENTS FOR RITCHIE ROAD ARE TO BE CONSTRUCTED BY PRINCE GEORGES COUNTY UNDER CAPITAL IMPROVEMENT PROJECT NUMBER PD666751.

UTILITY CERTIFICATION

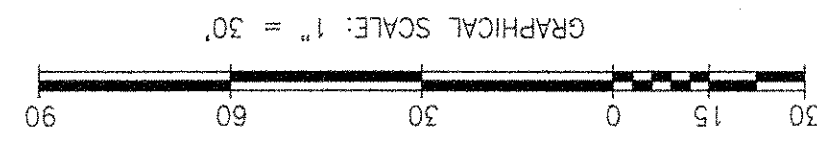
I HEREBY CERTIFY THAT THE EXISTING AND/OR PROPOSED UNDERGROUND UTILITY INFORMATION SHOWN HEREON HAS BEEN CAREFULLY DULY CHECKED FROM UTILITY COMPANY RECORDS. FURTHER THAT THIS PROJECT HAS BEEN CAREFULLY COORDINATED WITH EACH UTILITY COMPANY AND ALL AVAILABLE UNDERGROUND UTILITY INFORMATION RELATIVE TO THE PROJECT HAS BEEN SOLICITED FROM THEM.

ROBERT E. WILLIAMS, JR.
REGISTERED PROFESSIONAL ENGINEER
NO. #26031
DATE 11/26/07

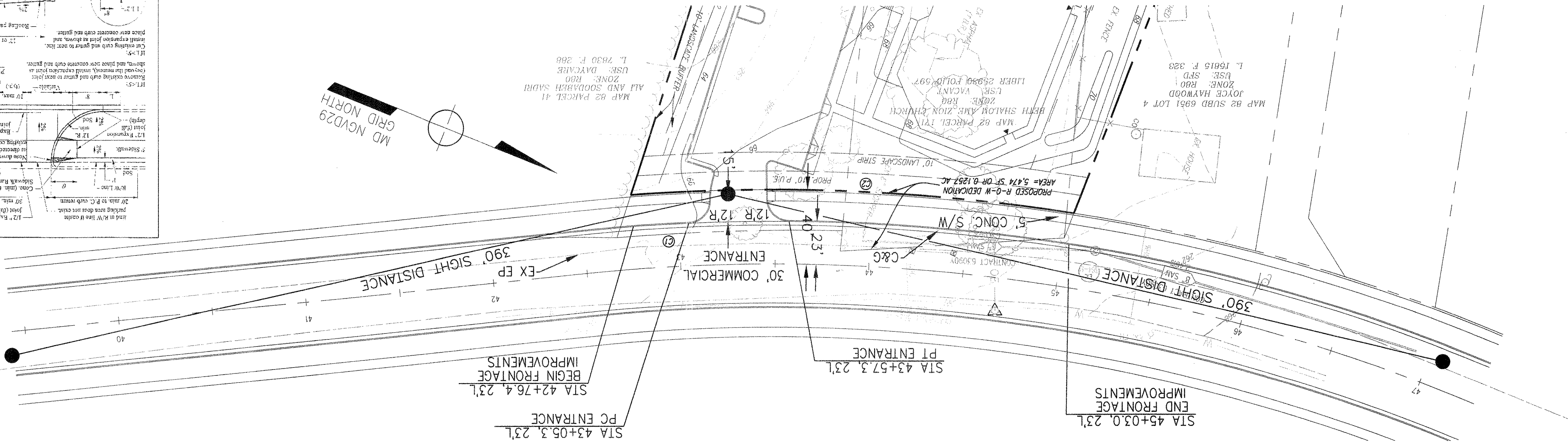


CURVE TABLE

CURVE	LENGTH	RADIUS	DELTA	TANGENT	CHORD	CHORD BEARING
C1	120.02'	1118.00'	60.903°	60.07'	119.96'	N24°04'09"E
C2	236.13'	995.00'	13.3551°	118.62'	235.58'	S19°46'02"E



**POSTED SPEED - 35 MPH
VARIABLE WIDTH RW
RITCHIE ROAD**



CAUTION - NOTICE TO CONTRACTOR

THE CONTRACTOR IS SPECIALLY CAUTIONED THAT THE LOCATION AND/OR ELEVATION OF EXISTING UTILITIES AS SHOWN ON THESE PLANS IS BASED ON RECORDS OF THE VARIOUS UTILITY COMPANIES AND, WHERE POSSIBLE, MEASUREMENTS TAKEN IN THE FIELD. THE INFORMATION IS NOT TO BE RELIED ON AS BEING EXACT OR COMPLETE. THE CONTRACTOR MUST CALL THE APPROPRIATE UTILITY COMPANY AT LEAST 48 HOURS BEFORE ANY EXCAVATION TO REQUEST EXACT FIELD LOCATION OF UTILITIES. IT SHALL BE THE RESPONSIBILITY OF THE CONTRACTOR TO RELOCATE ALL EXISTING UTILITIES WHICH CONFLICT WITH THE PROPOSED IMPROVEMENTS SHOWN ON THE PLANS AND TO VERIFY THE EXACT LOCATION OF ALL EXISTING UTILITIES PRIOR TO COMMENCEMENT OF CONSTRUCTION ACTIVITIES.

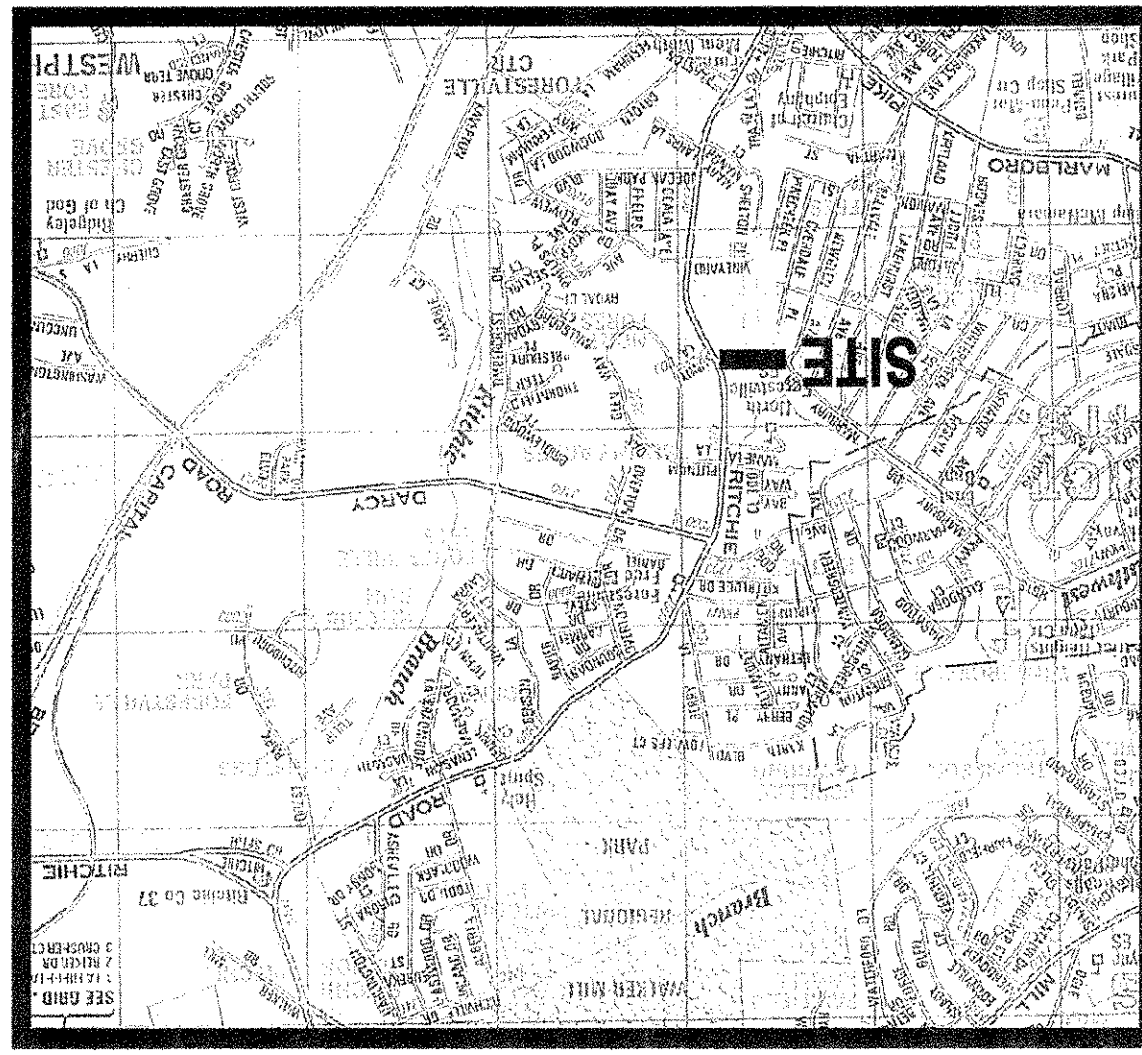
DEPARTMENT OF PUBLIC WORKS AND TRANSPORTATION
(DPW&T)
ENGINEERING AND INSPECTION SERVICES DIVISION
PRINCE GEORGE'S COUNTY, MARYLAND

BY: _____
DISTRICT ENGINEER

APPROVAL DATE: _____
PAVING DRAINAGE

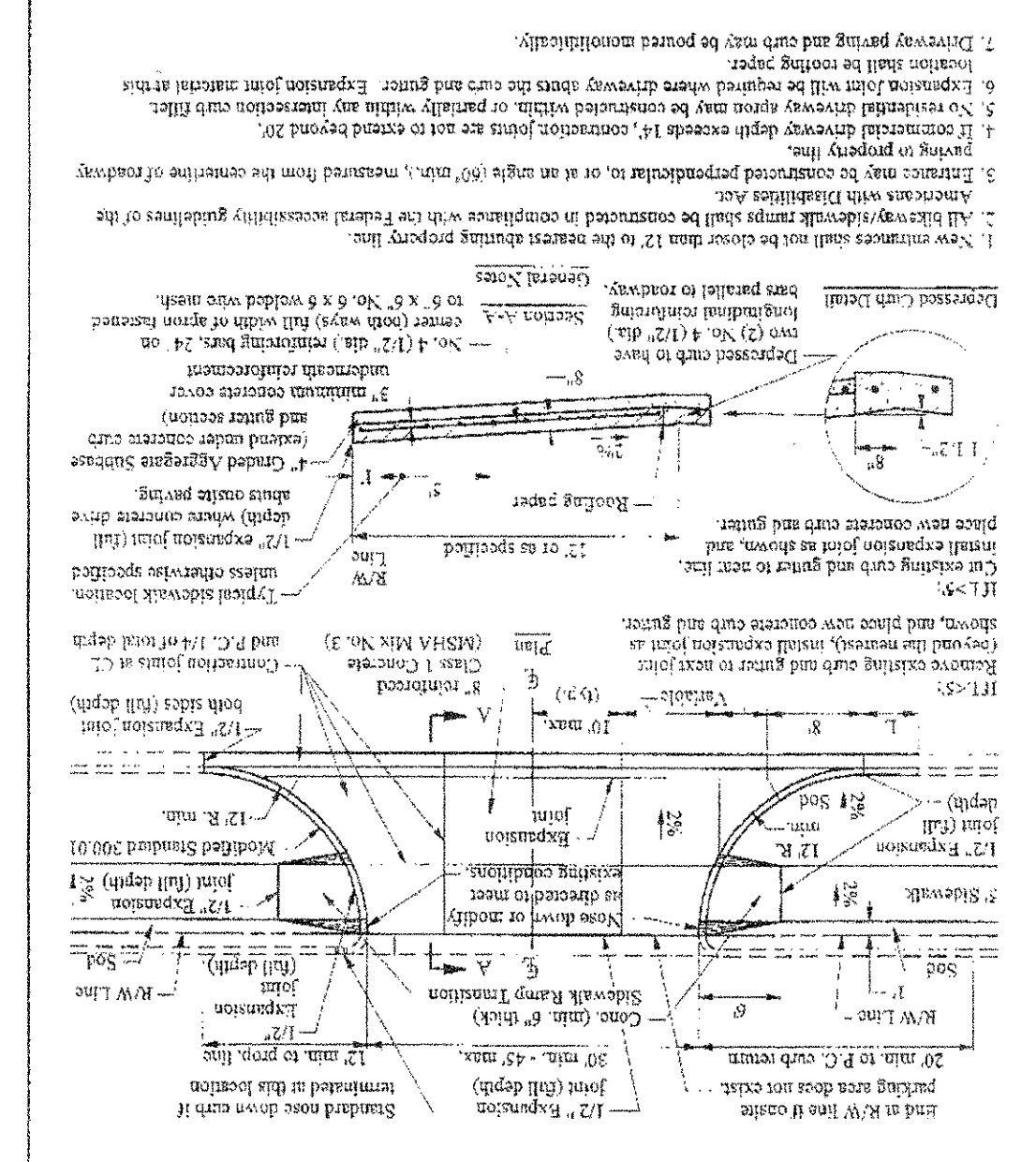
PERMIT NUMBER: _____
LOTS/BLOCKS: _____

VICINITY MAP



DEPARTMENT OF TRANSPORTATION
Prince George's County, MD

DATE	APPROVED BY	DESCRIPTION
11/26/07	[Signature]	DRIVEWAY ENTRANCE (Full Reveal)
2004	[Signature]	Commercial



STORM DRAIN AND PAVING PLAN

**BETH SHALOM AME
ZION CHURCH**
6TH ELECTION DISTRICT
PRINCE GEORGE'S COUNTY, MARYLAND

DATE: AUGUST 2007
SCALE: 1"=30'
DRAWING NAME: 19D09-SDDP-REV
FILE NO. MDPG-19D09-01

WE Inc.
Williams Enterprises Incorporated
18 Mosby Lane Stafford, Virginia 22556
540-286-3710 and 540-286-0345 Fax
wein@ingres.net

WARDER
Your Church Builder
Phone: (301) 868-5900
Toll Free: (800) 732-7266
Fax: (301) 868-8740
www.wardergroup.com